

For Research Use Only

# CD23 Monoclonal antibody, PBS Only (Capture)

Catalog Number: 60208-2-PBS



## Basic Information

Catalog Number: 60208-2-PBS	GenBank Accession Number: BC064417	Purification Method: Protein A purification
Size: 1mg/ml	GeneID (NCBI): 2208	CloneNo.: 4C7C9
Source: Mouse	UNIPROT ID: P06734	
Isotype: IgG2a	Full Name: Fc fragment of IgE, low affinity II, receptor for (CD23)	
Immunogen Catalog Number: AG0425	Calculated MW: 321 aa, 36 kDa	
	Observed MW: 40 kDa	

## Applications

**Tested Applications:**  
WB, IHC, IF-P, Cytometric bead array, Indirect ELISA

**Species Specificity:**  
human, mouse

## Background Information

CD23, also known as low affinity immunoglobulin epsilon Fc receptor, is a transmembrane glycoprotein present on a subpopulation of B lymphocytes in germinal centres, EBV-transformed B-lymphoblastoid cell lines, follicular dendritic cells, and a subpopulation of peripheral blood cells. CD23 has essential roles in the regulation of IgE production and in the differentiation of B-cells.

## Storage

**Storage:**  
Store at -80°C.

**The product is shipped with ice packs. Upon receipt, store it immediately at -80°C**

**Storage Buffer:**  
PBS Only

For technical support and original validation data for this product please contact:

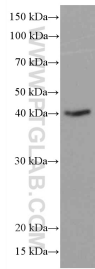
T: 4006900926

E: [Proteintech-CN@ptglab.com](mailto:Proteintech-CN@ptglab.com)

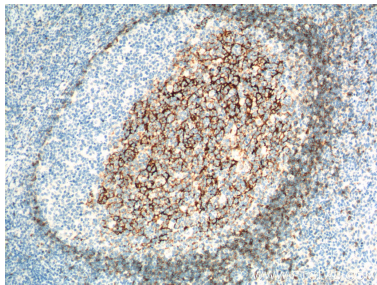
W: [ptgcn.com](http://ptgcn.com)

**This product is exclusively available under Proteintech Group brand and is not available to purchase from any other manufacturer.**

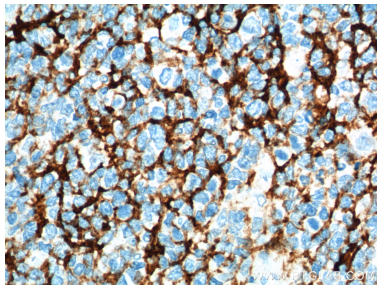
Selected Validation Data



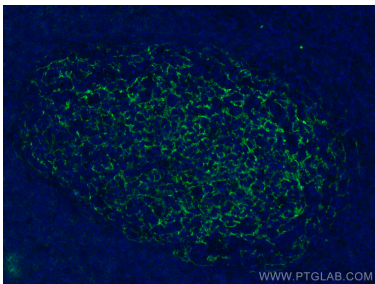
Raji cells were subjected to SDS PAGE followed by western blot with 60208-2-Ig (CD23 antibody) at dilution of 1:4000 incubated at room temperature for 1.5 hours. This data was developed using the same antibody clone with 60208-2-PBS in a different storage buffer formulation.



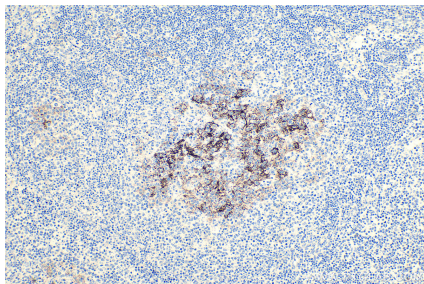
Immunohistochemical analysis of paraffin-embedded human tonsillitis tissue slide using 60208-2-Ig (CD23 antibody at dilution of 1:200 (under 10x lens). Heat mediated antigen retrieval with Tris-EDTA buffer (pH 9.0). This data was developed using the same antibody clone with 60208-2-PBS in a different storage buffer formulation.



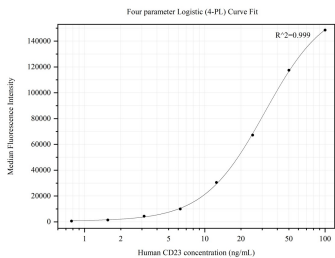
Immunohistochemical analysis of paraffin-embedded human tonsillitis tissue slide using 60208-2-Ig (CD23 antibody at dilution of 1:200 (under 40x lens). Heat mediated antigen retrieval with Tris-EDTA buffer (pH 9.0). This data was developed using the same antibody clone with 60208-2-PBS in a different storage buffer formulation.



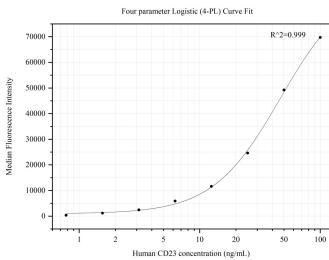
Immunofluorescent analysis of (4% PFA) fixed paraffin-embedded human tonsillitis tissue using CD23 antibody (60208-2-Ig, Clone: 4C7C9) at dilution of 1:400 and Coralite®488-Conjugated Goat Anti-Mouse IgG(H+L) (SA00013-1). Heat mediated antigen retrieval with Tris-EDTA buffer (pH 9.0). This data was developed using the same antibody clone with 60208-2-PBS in a different storage buffer formulation.



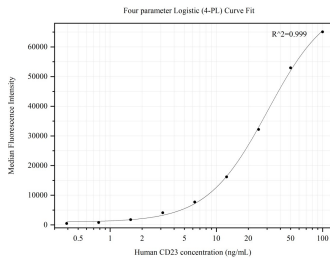
Immunohistochemical analysis of paraffin-embedded human lymphoma tissue slide using 60208-2-Ig (CD23 antibody) at dilution of 1:10000 (under 10x lens). Heat mediated antigen retrieval with Tris-EDTA buffer (pH 9.0). This data was developed using the same antibody clone with 60208-2-PBS in a different storage buffer formulation.



Cytometric bead array standard curve of MP50220-1, CD23,FCER2 Monoclonal Matched Antibody Pair, PBS Only. Capture antibody: 60208-2-PBS. Detection antibody: 60208-3-PBS. Standard:Ag0425. Range: 0.781-100 ng/mL.



Cytometric bead array standard curve of MP50220-2, CD23,FCER2 Monoclonal Matched Antibody Pair, PBS Only. Capture antibody: 60208-2-PBS. Detection antibody: 60208-4-PBS. Standard:Ag0425. Range: 0.781-100 ng/mL.



Cytometric bead array standard curve of MP50220-3, CD23,FCER2 Monoclonal Matched Antibody Pair, PBS Only. Capture antibody: 60208-2-PBS. Detection antibody: 60208-1-PBS. Standard:Ag0425. Range: 0.391-100 ng/mL.