

For Research Use Only

CD23 Monoclonal antibody, PBS Only (Capture/Detector)

Catalog Number: 60208-1-PBS



Basic Information

Catalog Number:

60208-1-PBS

Size:

1mg/ml

Source:

Mouse

Isotype:

IgG1

Immunogen Catalog Number:

AG0425

GenBank Accession Number:

BC064417

GeneID (NCBI):

2208

UNIPROT ID:

P06734

Full Name:

Fc fragment of IgE, low affinity II,
receptor for (CD23)

Calculated MW:

321 aa, 36 kDa

Observed MW:

36 kDa

Purification Method:

Protein G purification

CloneNo.:

3H6B8

Applications

Tested Applications:

WB, IHC, IF-P, Cytometric bead array, Indirect ELISA

Species Specificity:

human, mouse

Background Information

CD23, also known as low affinity immunoglobulin epsilon Fc receptor, is a transmembrane glycoprotein present on a subpopulation of B lymphocytes in germinal centres, EBV-transformed B-lymphoblastoid cell lines, follicular dendritic cells, and a subpopulation of peripheral blood cells. CD23 has essential roles in the regulation of IgE production and in the differentiation of B-cells.

Storage

Storage:

Store at -80°C.

The product is shipped with ice packs. Upon receipt, store it immediately at -80°C

Storage Buffer:

PBS Only

For technical support and original validation data for this product please contact:

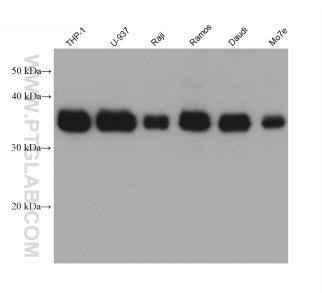
T: 4006900926

E: Proteintech-CN@ptglab.com

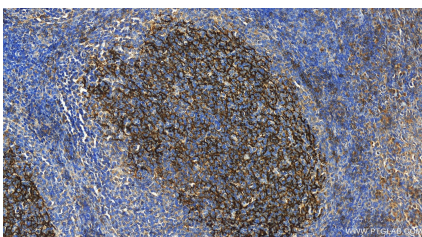
W: ptgcn.com

This product is exclusively available under Proteintech Group brand and is not available to purchase from any other manufacturer.

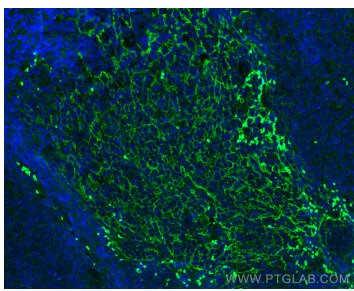
Selected Validation Data



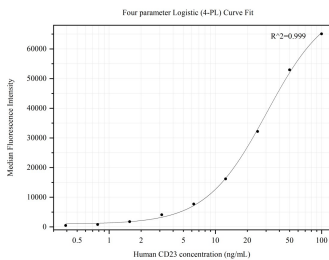
Various lysates were subjected to SDS PAGE followed by western blot with 60208-1-Ig (CD23 antibody) at dilution of 1:10000 incubated at room temperature for 1.5 hours. This data was developed using the same antibody clone with 60208-1-PBS in a different storage buffer formulation.



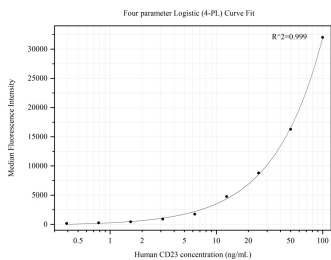
Immunohistochemical analysis of paraffin-embedded human tonsillitis tissue slide using 60208-1-Ig (CD23 antibody) at dilution of 1:1000 (under 20x lens). Heat mediated antigen retrieval with Tris-EDTA buffer (pH 9.0). This data was developed using the same antibody clone with 60208-1-PBS in a different storage buffer formulation.



Immunofluorescent analysis of (4% PFA) fixed paraffin-embedded human tonsillitis tissue using CD23 antibody (60208-1-Ig, Clone: 3H6B8) at dilution of 1:400 and CoraLite@488-Conjugated Goat Anti-Mouse IgG(H+L) (SA00013-1). Heat mediated antigen retrieval with Tris-EDTA buffer (pH 9.0). This data was developed using the same antibody clone with 60208-1-PBS in a different storage buffer formulation.



Cytometric bead array standard curve of MP50220-3, CD23, FCER2 Monoclonal Matched Antibody Pair, PBS Only. Capture antibody: 60208-2-PBS. Detection antibody: 60208-1-PBS. Standard: Ag0425. Range: 0.391-100 ng/mL.



Cytometric bead array standard curve of MP50220-4, CD23, FCER2 Monoclonal Matched Antibody Pair, PBS Only. Capture antibody: 60208-1-PBS. Detection antibody: 60208-4-PBS. Standard: Ag0425. Range: 0.391-100 ng/mL.