

For Research Use Only

# Galectin-3 Monoclonal antibody, PBS Only

Catalog Number: 60207-1-PBS

Featured Product



## Basic Information

Catalog Number:

60207-1-PBS

Size:

1000 µg/ml

Source:

Mouse

Isotype:

IgG2b

Immunogen Catalog Number:

AG6753

GenBank Accession Number:

BC001120

GeneID (NCBI):

3958

UNIPROT ID:

P17931

Full Name:

lectin, galactoside-binding, soluble, 3

Calculated MW:

26 kDa

Observed MW:

31 kDa

Purification Method:

Protein A purification

CloneNo.:

1C1B2

## Applications

Tested Applications:

WB, IHC, IF/ICC, IF-P, FC (Intra), ELISA

Species Specificity:

human, mouse

## Background Information

Galectins are a family of animal lectins defined by shared characteristic amino-acid sequences and affinity for  $\beta$ -galactose-containing oligosaccharides (PMID: 8063692). Galectin-3, a member of the  $\beta$ -galactoside-binding proteins, contains one carbohydrate recognition domain (CRD) and a proline- and glycine-rich N-terminal domain through which is able to form oligomers (PMID: 14758078). Galectin-3 is widely expressed in many normal tissues and a variety of tumors. It is found intracellularly in nucleus and cytoplasm or secreted outside of cell, being present on the cell surface or in the extracellular space (PMID: 16478649). Galectin-3 is involved in various biological processes including cell growth, adhesion, differentiation, apoptosis, angiogenesis, immune response, neoplastic transformation and metastasis (PMID: 16478649; 14758078).

## Storage

Storage:

Store at -80°C.

The product is shipped with ice packs. Upon receipt, store it immediately at -80°C

Storage Buffer:

PBS Only

For technical support and original validation data for this product please contact:

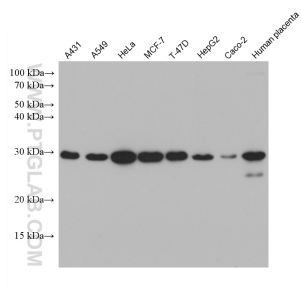
T: 4006900926

E: [Proteintech-CN@ptglab.com](mailto:Proteintech-CN@ptglab.com)

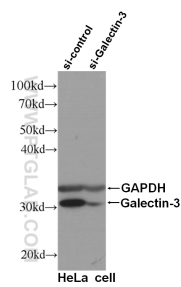
W: [ptgcn.com](http://ptgcn.com)

This product is exclusively available under Proteintech Group brand and is not available to purchase from any other manufacturer.

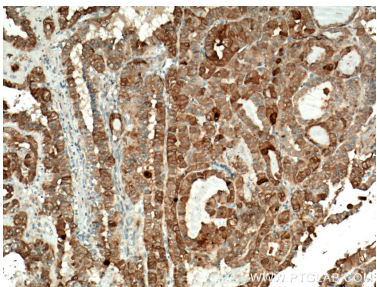
Selected Validation Data



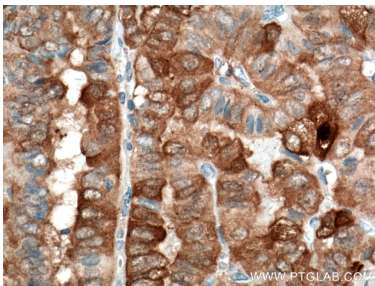
Various lysates were subjected to SDS PAGE followed by western blot with 60207-1-Ig (Galectin-3 antibody) at dilution of 1:10000 incubated at room temperature for 1.5 hours. This data was developed using the same antibody clone with 60207-1-PBS in a different storage buffer formulation.



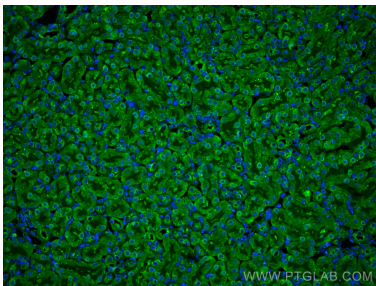
WB result of Galectin-3 specific antibody (60207-1-Ig, 1:1000) with si-control and si-Galectin-3 transfected HeLa cells. This data was developed using the same antibody clone with 60207-1-PBS in a different storage buffer formulation.



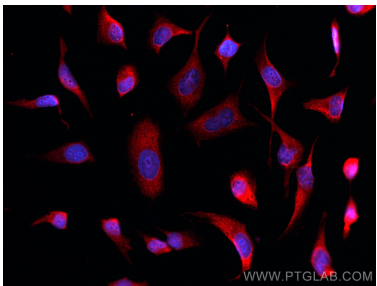
Immunohistochemical analysis of paraffin-embedded human thyroid cancer tissue slide using 60207-1-Ig (Galectin-3 antibody) at dilution of 1:2000 (under 10x lens. Heat mediated antigen retrieval with Tris-EDTA buffer (pH 9.0). This data was developed using the same antibody clone with 60207-1-PBS in a different storage buffer formulation.



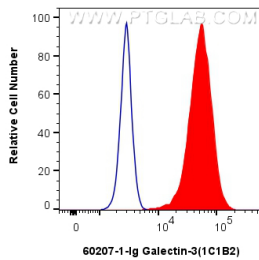
Immunohistochemical analysis of paraffin-embedded human thyroid cancer tissue slide using 60207-1-Ig (Galectin-3 antibody) at dilution of 1:2000 (under 40x lens. Heat mediated antigen retrieval with Tris-EDTA buffer (pH 9.0). This data was developed using the same antibody clone with 60207-1-PBS in a different storage buffer formulation.



Immunofluorescent analysis of (4% PFA) fixed mouse kidney tissue using Galectin-3 antibody (60207-1-Ig, Clone: 1C1B2 ) at dilution of 1:400 and CoraLite®488-Conjugated AffiniPure Goat Anti-Mouse IgG(H+L). This data was developed using the same antibody clone with 60207-1-PBS in a different storage buffer formulation.



Immunofluorescent analysis of (-20°C Ethanol) fixed HeLa cells using Galectin-3 antibody (60207-1-Ig, Clone: 1C1B2 ) at dilution of 1:800 and CoraLite®594-Conjugated AffiniPure Goat Anti-Mouse IgG(H+L). This data was developed using the same antibody clone with 60207-1-PBS in a different storage buffer formulation.



Immunohistochemical analysis of paraffin-embedded human colon tissue slide using 60207-1-Ig (Galectin-3 antibody) at dilution of 1:15000 (under 10x lens). Heat mediated antigen retrieval with Tris-EDTA buffer (pH 9.0). This data was developed using the same antibody clone with 60207-1-PBS in a different storage buffer formulation.

1X10<sup>6</sup> HeLa cells were intracellularly stained with 0.8 ug Anti-Human Galectin-3 (60207-1-Ig, Clone:1C1B2) and CoraLite®488-Conjugated AffiniPure Goat Anti-Mouse IgG(H+L) at dilution 1:1000 (red), or 0.8 ug Mouse IgG2b isotype control Mouse McAb (66360-3-Ig, Clone: 11B8C4) (blue). Cells were fixed with 4% PFA and permeabilized with Flow Cytometry Perm Buffer (PF00011-C). This data was developed using the same antibody clone with 60207-1-PBS in a