

# Galectin-3 Monoclonal antibody

Catalog Number: 60207-1-Ig

Featured Product

46 Publications

## Basic Information

## Catalog Number:

60207-1-Ig

## Size:

1000 ug/ml

## Source:

Mouse

## Isotype:

IgG2b

## Immunogen Catalog Number:

AG6753

## GenBank Accession Number:

BC001120

## GeneID (NCBI):

3958

## UNIPROT ID:

P17931

## Full Name:

lectin, galactoside-binding, soluble, 3

## Calculated MW:

26 kDa

## Observed MW:

31 kDa

## Purification Method:

Protein A purification

## CloneNo.:

1C1B2

## Recommended Dilutions:

WB 1:5000-1:50000

IHC 1:1000-1:4000

IF-P 1:200-1:800

IF/ICC 1:400-1:1600

## Applications

## Tested Applications:

WB, IHC, IF/ICC, IF-P, FC (Intra), ELISA

## Cited Applications:

WB, IHC, IF, IP, CoIP

## Species Specificity:

human, mouse

## Cited Species:

human, mouse, rat

**Note-IHC: suggested antigen retrieval with TE buffer pH 9.0; (\*) Alternatively, antigen retrieval may be performed with citrate buffer pH 6.0**

## Positive Controls:

**WB**: A431 cells, HSC-T6 cells, HeLa cells, A549 cells, MCF-7 cells, T-47D cells, HepG2 cells, Caco-2 cells, human placenta tissue

**IHC**: human thyroid cancer tissue, human colon tissue, human ovary tumor tissue

**IF-P**: mouse kidney tissue, human thyroid cancer tissue

**IF/ICC**: HeLa cells, mouse kidney tissue, MCF-7 cells, human thyroid cancer tissue

## Background Information

Galectins are a family of animal lectins defined by shared characteristic amino-acid sequences and affinity for  $\beta$ -galactose-containing oligosaccharides (PMID: 8063692). Galectin-3, a member of the  $\beta$ -galactoside-binding proteins, contains one carbohydrate recognition domain (CRD) and a proline- and glycine-rich N-terminal domain through which is able to form oligomers (PMID: 14758078). Galectin-3 is widely expressed in many normal tissues and a variety of tumors. It is found intracellularly in nucleus and cytoplasm or secreted outside of cell, being present on the cell surface or in the extracellular space (PMID: 16478649). Galectin-3 is involved in various biological processes including cell growth, adhesion, differentiation, apoptosis, angiogenesis, immune response, neoplastic transformation and metastasis (PMID: 16478649; 14758078).

## Notable Publications

Author	Pubmed ID	Journal	Application
Vinay V Eapen	34585663	Elife	WB,IF
Dandan Zong	36332381	Sleep Med	WB
Ying Li	33124742	FASEB J	WB

## Storage

## Storage:

Store at -20°C. Stable for one year after shipment.

## Storage Buffer:

PBS with 0.02% sodium azide and 50% glycerol pH 7.3.

Aliquoting is unnecessary for -20°C storage

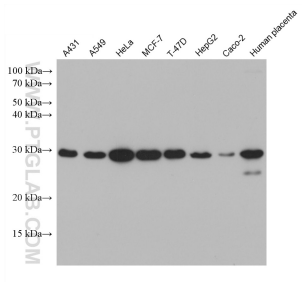
For technical support and original validation data for this product please contact:

T: 4006900926

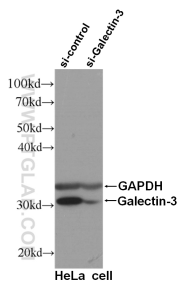
E: [Proteintech-CN@ptglab.com](mailto:Proteintech-CN@ptglab.com)W: [ptgcn.com](http://ptgcn.com)

**This product is exclusively available under Proteintech Group brand and is not available to purchase from any other manufacturer.**

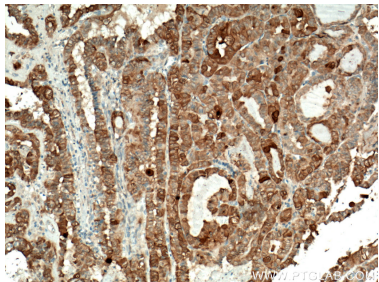
Selected Validation Data



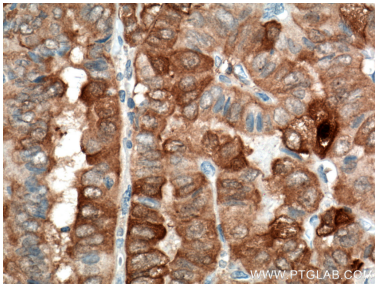
Various lysates were subjected to SDS PAGE followed by western blot with 60207-1-Ig (Galectin-3 antibody) at dilution of 1:10000 incubated at room temperature for 1.5 hours.



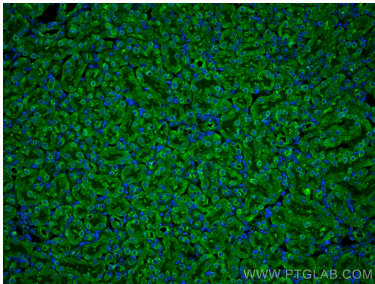
WB result of Galectin-3 specific antibody (60207-1-Ig, 1:1000) with si-control and si-Galectin-3 transfected HeLa cells.



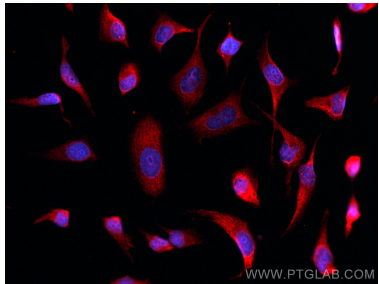
Immunohistochemical analysis of paraffin-embedded human thyroid cancer tissue slide using 60207-1-Ig (Galectin-3 antibody) at dilution of 1:2000 (under 10x lens. Heat mediated antigen retrieval with Tris-EDTA buffer (pH 9.0).



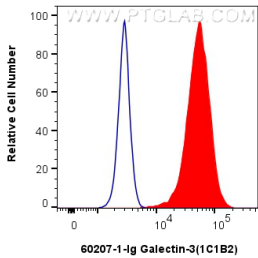
Immunohistochemical analysis of paraffin-embedded human thyroid cancer tissue slide using 60207-1-Ig (Galectin-3 antibody) at dilution of 1:2000 (under 40x lens. Heat mediated antigen retrieval with Tris-EDTA buffer (pH 9.0).



Immunofluorescent analysis of (4% PFA) fixed mouse kidney tissue using Galectin-3 antibody (60207-1-Ig, Clone: 1C1B2 ) at dilution of 1:400 and CoraLite®488-Conjugated AffiniPure Goat Anti-Mouse IgG(H+L).



Immunofluorescent analysis of (-20°C Ethanol) fixed HeLa cells using Galectin-3 antibody (60207-1-Ig, Clone: 1C1B2 ) at dilution of 1:800 and CoraLite®594-Conjugated AffiniPure Goat Anti-Mouse IgG(H+L).



1X10<sup>6</sup> HeLa cells were intracellularly stained with 0.8 ug Anti-Human Galectin-3 (60207-1-Ig, Clone:1C1B2) and CoraLite®488-Conjugated AffiniPure Goat Anti-Mouse IgG(H+L) at dilution 1:1000 (red), or 0.8 ug Mouse IgG2b isotype control Mouse McAb (66360-3-Ig, Clone: 11B8C4) (blue). Cells were fixed with 4% PFA and permeabilized with Flow Cytometry Perm Buffer (PF00011-C).

Immunohistochemical analysis of paraffin-embedded human colon tissue slide using 60207-1-Ig (Galectin-3 antibody) at dilution of 1:15000 (under 10x lens). Heat mediated antigen retrieval with Tris-EDTA buffer (pH 9.0).