

For Research Use Only

Cytokeratin 19 Monoclonal antibody, PBS Only

Catalog Number: 60187-1-PBS

Featured Product



Basic Information

Catalog Number:

60187-1-PBS

Concentration:

1000 µg/ml

Source:

Mouse

Isotype:

IgG2b

Immunogen Catalog Number:

AG7407

GenBank Accession Number:

BC002539

GeneID (NCBI):

3880

UNIPROT ID:

P08727

Full Name:

keratin 19

Calculated MW:

44 kDa

Observed MW:

48 kDa

Purification Method:

Protein A purification

CloneNo.:

3G1E4

Applications

Tested Applications:

WB, IHC, IF-P, IF-Fro, FC (Intra), Indirect ELISA

Species Specificity:

human, pig

Background Information

The keratins are intermediate filament proteins responsible for the structural integrity of epithelial cells. KRT19, one of type I keratins, is specifically expressed in the periderm, the transiently superficial layer that envelopes the developing epidermis. Due to its high sensitivity, KRT19 is the most used marker for detection of tumor cells disseminated in lymph nodes, peripheral blood, and bone marrow of breast cancer patients.

Storage

Storage:

Store at -80°C.

The product is shipped with ice packs. Upon receipt, store it immediately at -80°C

Storage Buffer:

PBS only, pH7.3

For technical support and original validation data for this product please contact:

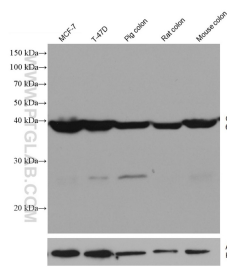
T: 4006900926

E: Proteintech-CN@ptglab.com

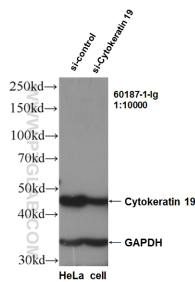
W: ptgcn.com

This product is exclusively available under Proteintech Group brand and is not available to purchase from any other manufacturer.

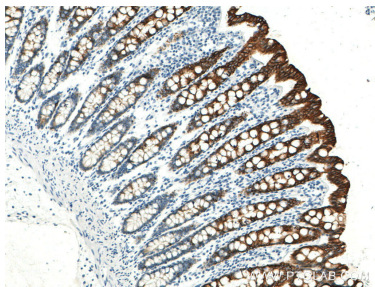
Selected Validation Data



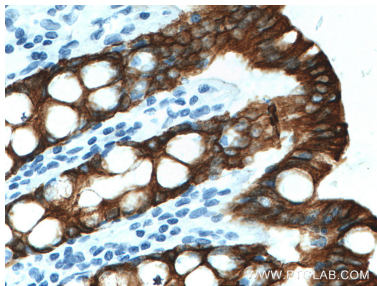
Various lysates were subjected to SDS PAGE followed by western blot with 60187-1-Ig (Cytokeratin 19 antibody) at dilution of 1:50000 incubated at room temperature for 1.5 hours. The membrane was stripped and reblotted with HRP-conjugated Alpha Tubulin Monoclonal antibody (HRP-66031) as loading control. This data was developed using the same antibody clone with 60187-1-PBS in a different storage buffer formulation.



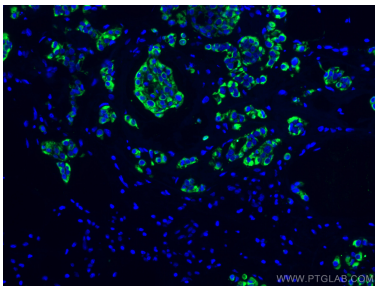
WB result of KRT19 antibody (60187-1-Ig, 1:10,000) with si-Control and si-KRT19 transfected HeLa cells. This data was developed using the same antibody clone with 60187-1-PBS in a different storage buffer formulation.



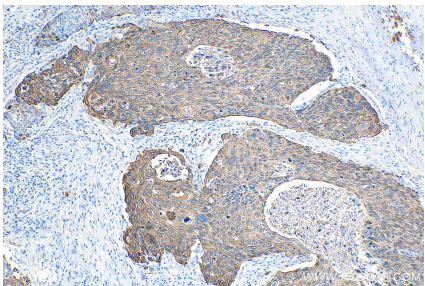
Immunohistochemical analysis of paraffin-embedded human colon tissue slide using 60187-1-Ig (Cytokeratin 19 antibody) at dilution of 1:51200 (under 10x lens). Heat mediated antigen retrieval with Tris-EDTA buffer (pH 9.0). This data was developed using the same antibody clone with 60187-1-PBS in a different storage buffer formulation.



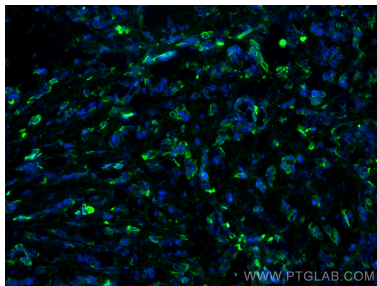
Immunohistochemical analysis of paraffin-embedded human colon tissue slide using 60187-1-Ig (Cytokeratin 19 antibody) at dilution of 1:51200 (under 40x lens). Heat mediated antigen retrieval with Tris-EDTA buffer (pH 9.0). This data was developed using the same antibody clone with 60187-1-PBS in a different storage buffer formulation.



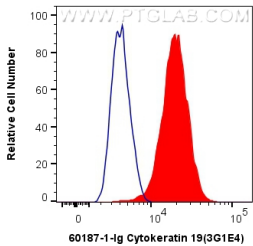
Immunofluorescent analysis of (4% PFA) fixed human breast cancer tissue using Cytokeratin 19 antibody (60187-1-Ig, Clone: 3G1E4) at dilution of 1:400 and CoraLite®488-Conjugated AffiniPure Goat Anti-Mouse IgG(H+L). This data was developed using the same antibody clone with 60187-1-PBS in a different storage buffer formulation.



Immunohistochemical analysis of paraffin-embedded human oesophagus cancer tissue slide using 60187-1-Ig (Cytokeratin 19 antibody) at dilution of 1:51200 (under 10x lens). Heat mediated antigen retrieval with Tris-EDTA buffer (pH 9.0). This data was developed using the same antibody clone with 60187-1-PBS in a different storage buffer formulation.



Immunofluorescent analysis of (4% PFA) fixed frozen OCT-embedded mouse breast cancer using Cytokeratin 19 antibody (60187-1-Ig, Clone: 3G1E4) at dilution of 1:400 and CoraLite®488-Conjugated AffiniPure Goat Anti-Mouse IgG(H+L) (SA00013-1). This data was developed using the same antibody clone with 60187-1-PBS in a different storage buffer formulation.



1X10⁶ HeLa cells were intracellularly stained with 0.4 ug Anti-Human Cytokeratin 19 (60187-1-Ig, Clone:3G1E4) and CoraLite®488-Conjugated AffiniPure Goat Anti-Mouse IgG(H+L) at dilution 1:1000 (red), or 0.4 ug Mouse IgG2b Isotype Control (MPC-11) (65128-1-Ig, Clone: MPC-11) (blue). Cells were fixed with 4% PFA and permeabilized with Flow Cytometry Perm Buffer (PF00011-C). This data was developed using the same antibody clone with 60187-1-PBS in a

