

For Research Use Only

CD138/Syndecan-1 Monoclonal antibody, PBS Only (Capture)

Catalog Number: 60185-1-PBS



Basic Information

Catalog Number: 60185-1-PBS	GenBank Accession Number: BC008765	Purification Method: Protein G purification
Concentration: 1000 µg/ml	GeneID (NCBI): 6382	CloneNo.: 1B6A2
Source: Mouse	UNIPROT ID: P18827	
Isotype: IgG1	Full Name: syndecan 1	
Immunogen Catalog Number: AG0823	Calculated MW: 32.5 kDa	
	Observed MW: 120 kDa	

Applications

Tested Applications:
WB, Sandwich ELISA, Indirect ELISA, Sample test

Species Specificity:
human

Background Information

Syndecan-1 (SDC1), also named CD138, is an integral membrane protein. It participates in cell proliferation, cell migration and cell-matrix interactions via its receptor for extracellular matrix proteins. It is a heparan sulfate proteoglycan expressed on the surface of, and actively shed by, myeloma cells. Altered syndecan-1 expression has been detected in several different tumor types. SDC1 was regarded as a useful marker for labeling normal and neoplastic plasma cells and plasmacytoid lymphomas.

Storage

Storage:
Store at -80°C.

The product is shipped with ice packs. Upon receipt, store it immediately at -80°C

Storage Buffer:
PBS only, pH7.3

For technical support and original validation data for this product please contact:

T: 4006900926

E: Proteintech-CN@ptglab.com

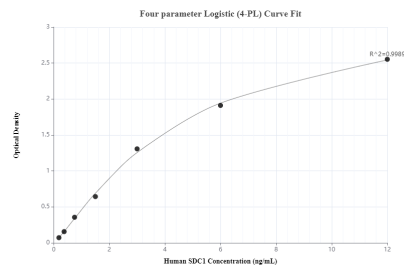
W: ptgcn.com

This product is exclusively available under Proteintech Group brand and is not available to purchase from any other manufacturer.

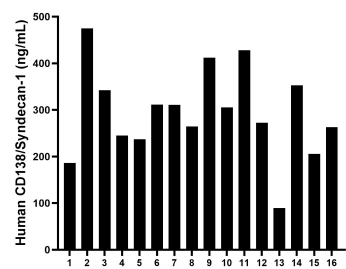
Selected Validation Data



BxPC-3 cells were subjected to SDS PAGE followed by western blot with 60185-1-Ig (CD138/Syndecan-1 antibody) at dilution of 1:400 incubated at room temperature for 1.5 hours. This data was developed using the same antibody clone with 60185-1-PBS in a different storage buffer formulation.



Sandwich ELISA standard curve of MP50044-1, SDC1,CD138 Monoclonal Matched Antibody Pair, PBS Only. Capture antibody: 60185-1-PBS. Detection antibody: 67155-1-PBS. Standard: Ag17733. Range: 0.188-12 ng/mL



Plasma of sixteen individual healthy human donors was measured. The CD138/Syndecan-1 concentration of detected samples was determined to be 293.79 ng/mL with a range of 89.65-474.60 ng/mL.