

For Research Use Only

Cytokeratin 20 Monoclonal antibody, PBS Only

Catalog Number: 60183-1-PBS



Basic Information

Catalog Number: 60183-1-PBS	GenBank Accession Number: BC031559	Purification Method: Protein A purification
Concentration: 1mg/ml	GeneID (NCBI): 54474	CloneNo.: 4D10A4
Source: Mouse	UNIPROT ID: P35900	
Isotype: IgG2b	Full Name: keratin 20	
Immunogen Catalog Number: AG11336	Calculated MW: 424 aa, 48 kDa	
	Observed MW: 46 kDa	

Applications

Tested Applications:
WB, IHC, IF/ICC, IF-P, Indirect ELISA

Species Specificity:
human

Background Information

Keratins are a large family of proteins that form the intermediate filament cytoskeleton of epithelial cells. Keratin expression is highly regulated, tissue specific, and varies according to cell-state. Type I keratins consist of acidic, low molecular weight proteins with MW ranging from 40 kDa (KRT19) to 64 kDa (KRT9). Type 2 keratins consist of basic or neutral, high molecular weight proteins with MW from 52 kDa (KRT8) to 67 kDa (KRT18). Keratin 20 is a type I cytokeratin. It is a major cellular protein of mature enterocytes and goblet cells and is specifically found in the gastric and intestinal mucosa.

Storage

Storage:
Store at -80°C.
The product is shipped with ice packs. Upon receipt, store it immediately at -80°C

Storage Buffer:
PBS Only

For technical support and original validation data for this product please contact:

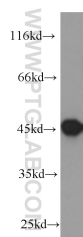
T: 4006900926

E: Proteintech-CN@ptglab.com

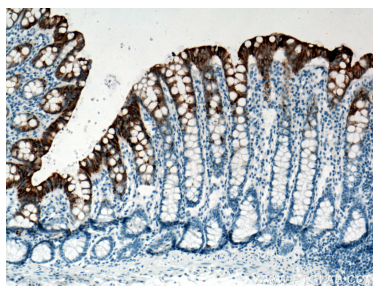
W: ptgcn.com

This product is exclusively available under Proteintech Group brand and is not available to purchase from any other manufacturer.

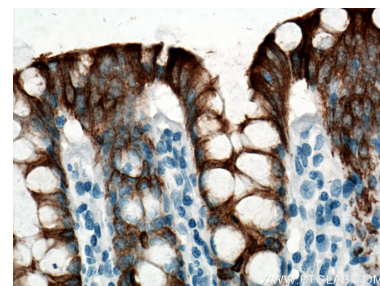
Selected Validation Data



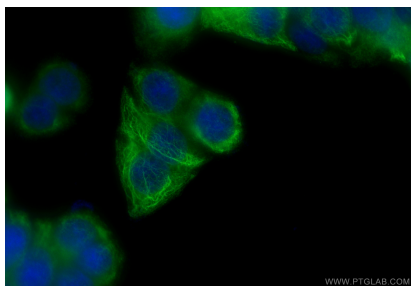
COLO 320 cells were subjected to SDS PAGE followed by western blot with 60183-1-Ig (Cytokeratin 20 antibody) at dilution of 1:1000 incubated at room temperature for 1.5 hours. This data was developed using the same antibody clone with 60183-1-PBS in a different storage buffer formulation.



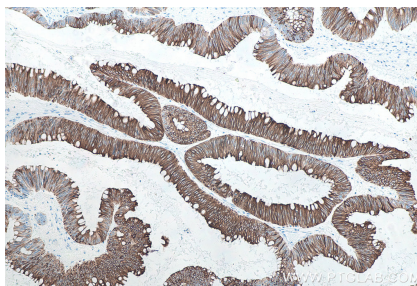
Immunohistochemical analysis of paraffin-embedded human colon tissue slide using 60183-1-Ig (Cytokeratin 20 antibody) at dilution of 1:51200 (under 10x lens. Heat mediated antigen retrieval with Tris-EDTA buffer (pH 9.0). This data was developed using the same antibody clone with 60183-1-PBS in a different storage buffer formulation.



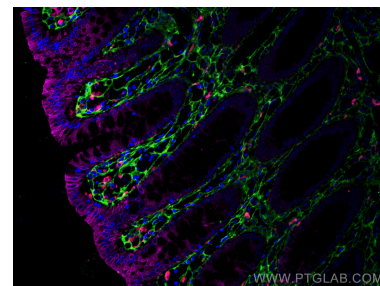
Immunohistochemical analysis of paraffin-embedded human colon tissue slide using 60183-1-Ig (Cytokeratin 20 antibody) at dilution of 1:51200 (under 40x lens. Heat mediated antigen retrieval with Tris-EDTA buffer (pH 9.0). This data was developed using the same antibody clone with 60183-1-PBS in a different storage buffer formulation.



Immunofluorescent analysis of (-20°C Ethanol) fixed HT-29 cells using Cytokeratin 20 antibody (60183-1-Ig, Clone: 4D10A4) at dilution of 1:800 and CoraLite®488-Conjugated Goat Anti-Mouse IgG(H+L) (SA00013-1). This data was developed using the same antibody clone with 60183-1-PBS in a different storage buffer formulation.



Immunohistochemical analysis of paraffin-embedded human colon cancer tissue slide using 60183-1-Ig (Cytokeratin 20 antibody) at dilution of 1:2000 (under 10x lens). Heat mediated antigen retrieval with Tris-EDTA buffer (pH 9.0). This data was developed using the same antibody clone with 60183-1-PBS in a different storage buffer formulation.



Immunofluorescent analysis of (4% PFA) fixed human colon tissue using Cytokeratin 20 antibody (60183-1-Ig, Clone: 4D10A4) at dilution of 1:400 and CoraLite®647-Conjugated AffiniPure Goat Anti-Mouse IgG(H+L), Collagen Type III (N-terminal) antibody (22734-1-AP, green), CoraLite®594 CD68 antibody (CL594-25747, red). This data was developed using the same antibody clone with 60183-1-PBS in a different storage buffer formulation.