

For Research Use Only

CD3 Monoclonal antibody, PBS Only (Detector)

Catalog Number: 60181-1-PBS

Featured Product



Basic Information

Catalog Number:

60181-1-PBS

Size:

1000 µg/ml

Source:

Mouse

Isotype:

IgG2b

Immunogen Catalog Number:

AG11797

GenBank Accession Number:

BC049847

GeneID (NCBI):

916

ENSEMBL Gene ID:

ENSG00000198851

UNIPROT ID:

P07766

Full Name:

CD3e molecule, epsilon (CD3-TCR complex)

Calculated MW:

207 aa, 23 kDa

Observed MW:

23 kDa

Purification Method:

Protein A purification

CloneNo.:

3F3A1

Applications

Tested Applications:

WB, IHC, IF/ICC, IF-P, Cytometric bead array, Indirect ELISA

Species Specificity:

human

Background Information

CD3 is a complex of proteins that directly associates with the T cell receptor (TCR). The TCR/CD3 complex of T-lymphocytes consists of either a TCR alpha/beta or TCR gamma/delta heterodimer coexpressed at the cell surface with the invariant subunits of CD3 labeled gamma, delta, epsilon, zeta, and eta. The TCR recognizes antigens bound to major histocompatibility complex (MHC) molecules. TCR-mediated peptide-MHC recognition is transmitted to the CD3 complex, leading to the intracellular signal transduction. CD3 is considered to be a pan-T cell marker for detection of normal and neoplastic T cells. This anti-CD3 is a monoclonal antibody directed against the epsilon chain of human CD3 molecule.

Storage

Storage:

Store at -80°C.

The product is shipped with ice packs. Upon receipt, store it immediately at -80°C

Storage Buffer:

PBS Only

For technical support and original validation data for this product please contact:

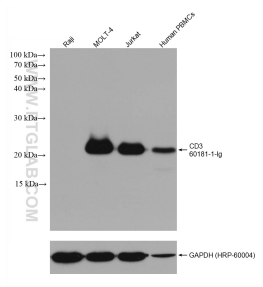
T: 4006900926

E: Proteintech-CN@ptglab.com

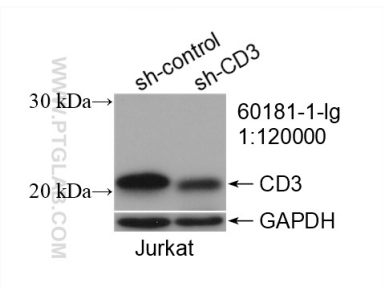
W: ptgcn.com

This product is exclusively available under Proteintech Group brand and is not available to purchase from any other manufacturer.

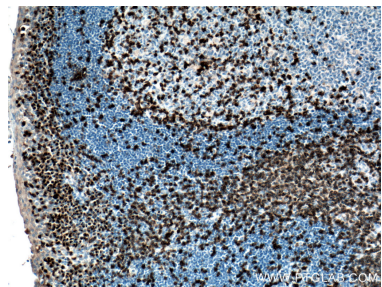
Selected Validation Data



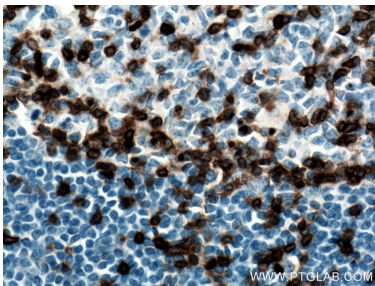
Various lysates were subjected to SDS PAGE followed by western blot with 60181-1-Ig (CD3 antibody) at dilution of 1:20000 incubated at room temperature for 1.5 hours. This data was developed using the same antibody clone with 60181-1-PBS in a different storage buffer formulation.



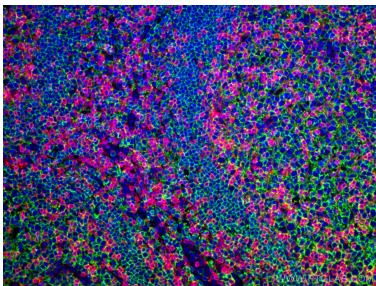
WB result of CD3 antibody (60181-1-Ig; 1:120000; incubated at room temperature for 1.5 hours) with sh-Control and sh-CD3 transfected Jurkat cells. This data was developed using the same antibody clone with 60181-1-PBS in a different storage buffer formulation.



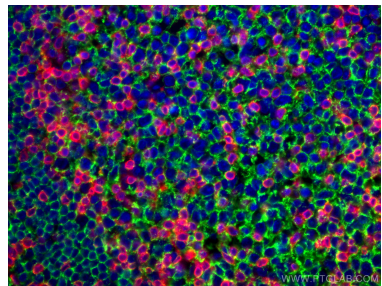
Immunohistochemical analysis of paraffin-embedded human tonsillitis tissue slide using 60181-1-Ig(CD3E antibody) at dilution of 1:6400 (under 10x lens). Heat mediated antigen retrieval with Tris-EDTA buffer (pH 9.0). This data was developed using the same antibody clone with 60181-1-PBS in a different storage buffer formulation.



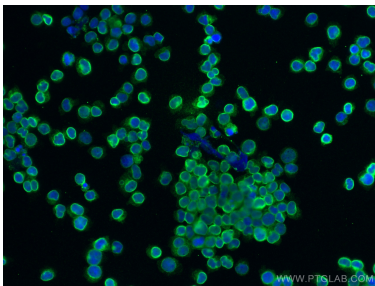
Immunohistochemical analysis of paraffin-embedded human tonsillitis tissue slide using 60181-1-Ig(CD3E antibody) at dilution of 1:6400 (under 40x lens). Heat mediated antigen retrieval with Tris-EDTA buffer (pH 9.0). This data was developed using the same antibody clone with 60181-1-PBS in a different storage buffer formulation.



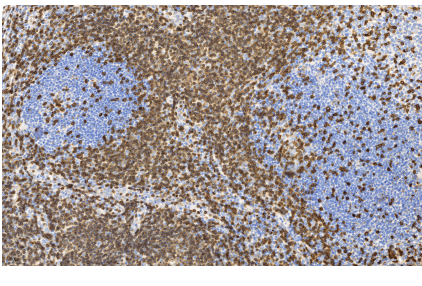
Immunofluorescent analysis of (4% PFA) fixed human tonsillitis tissue using CD3 antibody (60181-1-Ig, Clone: 3F3A1) at dilution of 1:400 and CoraLite®594-Conjugated AffiniPure Goat Anti-Mouse IgG(H+L), CD20 antibody (24828-1-AP, green). This data was developed using the same antibody clone with 60181-1-PBS in a different storage buffer formulation.



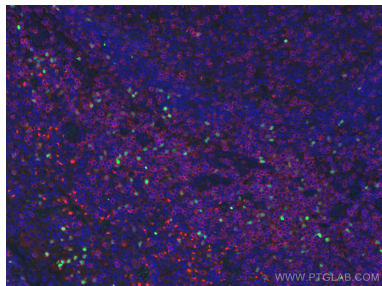
Immunofluorescent analysis of (4% PFA) fixed human tonsillitis tissue using CD3 antibody (60181-1-Ig, Clone: 3F3A1) at dilution of 1:400 and CoraLite®594-Conjugated AffiniPure Goat Anti-Mouse IgG(H+L), CD20 antibody (24828-1-AP, green). This data was developed using the same antibody clone with 60181-1-PBS in a different storage buffer formulation.



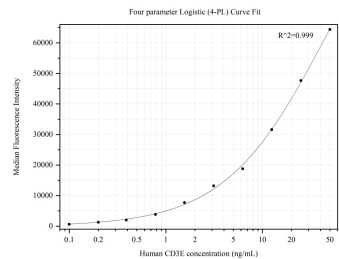
Immunofluorescent analysis of (4% PFA) fixed Jurkat cells using CD3 antibody (60181-1-Ig, Clone: 3F3A1) at dilution of 1:1000 and CoraLite®488-Conjugated AffiniPure Goat Anti-Mouse IgG(H+L). This data was developed using the same antibody clone with 60181-1-PBS in a different storage buffer formulation.



Immunohistochemical analysis of paraffin-embedded human tonsillitis tissue slide using 60181-1-Ig (CD3 antibody) at dilution of 1:6400 (under 10x lens). Heat mediated antigen retrieval with Tris-EDTA buffer (pH 9.0). This data was developed using the same antibody clone with 60181-1-PBS in a different storage buffer formulation.



Immunofluorescent analysis of (4% PFA) fixed paraffin-embedded human tonsillitis tissue using CD3 antibody (60181-1-Ig, Clone: 3F3A1) at dilution of 1:400 and CoraLite®594-Conjugated Goat Anti-Mouse IgG(H+L) (SA00013-3), FOXP3 antibody (22228-1-AP, green). Heat mediated antigen retrieval with Tris-EDTA buffer (pH 9.0). This data was developed using the same antibody clone with 60181-1-PBS in a different storage buffer formulation.



Cytometric bead array standard curve of MP50222-1, CD3E Monoclonal Matched Antibody Pair, PBS Only. Capture antibody: 60181-2-PBS. Detection antibody: 60181-1-PBS. Standard:Ag11797. Range: 0.098-50 ng/mL