

For Research Use Only

ACPP Monoclonal antibody, PBS Only

Catalog Number: 60176-1-PBS



Basic Information

Catalog Number: 60176-1-PBS	GenBank Accession Number: BC007460	Purification Method: Protein A purification
Size: 1mg/ml	GeneID (NCBI): 55	CloneNo.: 1G2C9
Source: Mouse	UNIPROT ID: P15309	
Isotype: IgG2a	Full Name: acid phosphatase, prostate	
Immunogen Catalog Number: AG8578	Calculated MW: 418 aa, 48 kDa	
	Observed MW: 45-50 kDa	

Applications

Tested Applications:
WB, IF, IHC, Indirect ELISA

Species Specificity:
human, rat

Background Information

ACPP is also named as PAP(prostatic acid phosphatase), 5'-nucleotidase, thiamine monophosphatase and belongs to the histidine acid phosphatase family. This enzyme is a homodimeric glycoprotein with a subunit molecular mass of 50 kDa and is an androgen-stimulated secretory product of the human prostate gland (PMID:8132635). It is also a non-specific phosphatase and has been implicated in the progression of prostate cancer, which inactivates LPA in human seminal plasma (PMID:15280042). This protein has three glycosylation sites (PMID:10639192;12525165).

Storage

Storage:
Store at -80°C.

The product is shipped with ice packs. Upon receipt, store it immediately at -80°C

Storage Buffer:
PBS Only

For technical support and original validation data for this product please contact:

T: 4006900926

E: Proteintech-CN@ptglab.com

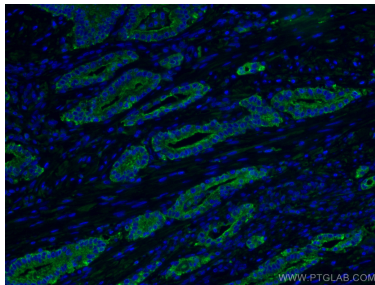
W: ptgcn.com

This product is exclusively available under Proteintech Group brand and is not available to purchase from any other manufacturer.

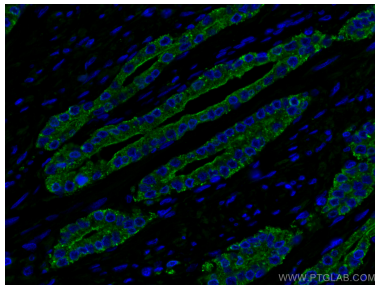
Selected Validation Data



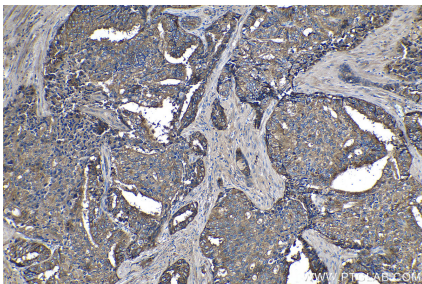
K-562 cells were subjected to SDS PAGE followed by western blot with 60176-1-Ig (ACPP Antibody) at dilution of 1:3000 incubated at room temperature for 1.5 hours. This data was developed using the same antibody clone with 60176-1-PBS in a different storage buffer formulation.



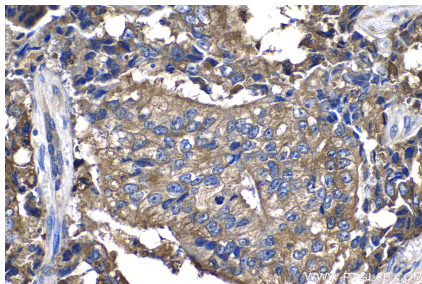
Immunofluorescent analysis of (4% PFA) fixed human prostate cancer tissue using ACPP antibody (60176-1-Ig, Clone: 1G2C9) at dilution of 1:400 and CoraLite®488-Conjugated AffiniPure Goat Anti-Mouse IgG(H+L). This data was developed using the same antibody clone with 60176-1-PBS in a different storage buffer formulation.



Immunofluorescent analysis of (4% PFA) fixed human prostate cancer tissue using ACPP antibody (60176-1-Ig, Clone: 1G2C9) at dilution of 1:400 and CoraLite®488-Conjugated AffiniPure Goat Anti-Mouse IgG(H+L). This data was developed using the same antibody clone with 60176-1-PBS in a different storage buffer formulation.



Immunohistochemical analysis of paraffin-embedded human prostate hyperplasia tissue slide using 60176-1-Ig (ACPP antibody) at dilution of 1:1000 (under 10x lens). This data was developed using the same antibody clone with 60176-1-PBS in a different storage buffer formulation.



Immunohistochemical analysis of paraffin-embedded human prostate hyperplasia tissue slide using 60176-1-Ig (ACPP antibody) at dilution of 1:1000 (under 40x lens). This data was developed using the same antibody clone with 60176-1-PBS in a different storage buffer formulation.