

For Research Use Only

CD122/IL-2RB Monoclonal antibody, PBS Only (Detector)

Catalog Number: 60174-1-PBS



Basic Information

Catalog Number: 60174-1-PBS	GenBank Accession Number: BC025691	Purification Method: Protein A purification
Size: 1 mg/ml	GeneID (NCBI): 3560	CloneNo.: 3A12C7
Source: Mouse	ENSEMBL Gene ID: ENSG00000100385	
Isotype: IgG1	UNIPROT ID: P14784	
Immunogen Catalog Number: AG3929	Full Name: interleukin 2 receptor, beta	
	Calculated MW: 551 aa, 61 kDa	
	Observed MW: 75 kDa, 61 kDa	

Applications

Tested Applications:
WB, Cytometric bead array, Indirect ELISA

Species Specificity:
human

Background Information

The interleukin 2 receptor, which is involved in T cell-mediated immune responses, is present in 3 forms with respect to ability to bind interleukin 2. The low affinity form is a monomer of the alpha subunit and is not involved in signal transduction. The intermediate affinity form consists of an alpha/beta subunit heterodimer, while the high affinity form consists of an alpha/beta/gamma subunit heterotrimer. The beta subunit (IL2RB, also known as CD122 and p75) is involved in receptor mediated endocytosis and transduces the mitogenic signals of interleukin 2.

Storage

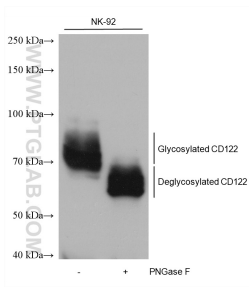
Storage:
Store at -80°C.
The product is shipped with ice packs. Upon receipt, store it immediately at -80°C

Storage Buffer:
PBS Only

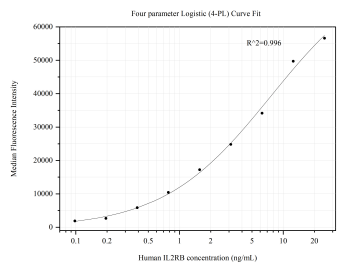
For technical support and original validation data for this product please contact:
T: 4006900926 E: Proteintech-CN@ptglab.com W: ptgcn.com

This product is exclusively available under Proteintech Group brand and is not available to purchase from any other manufacturer.

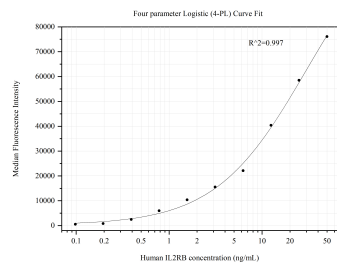
Selected Validation Data



Untreated and PNGase F-treated lysates of NK-92 cells were subjected to SDS PAGE followed by western blot with 60174-1-Ig (CD122/IL2RB antibody) at dilution of 1:10000 incubated at room temperature for 1.5 hours. This data was developed using the same antibody clone with 60174-1-PBS in a different storage buffer formulation.



Cytometric bead array standard curve of MP50451-1, CD122/IL2RB Monoclonal Matched Antibody Pair, PBS Only. Capture antibody: 60174-3-PBS. Detection antibody: 60174-1-PBS. Standard:Ag3929. Range: 0.098-25 ng/mL.



Cytometric bead array standard curve of MP50451-2, CD122/IL2RB Monoclonal Matched Antibody Pair, PBS Only. Capture antibody: 60174-2-PBS. Detection antibody: 60174-1-PBS. Standard:Ag3929. Range: 0.098-50 ng/mL.