

TEM1 Monoclonal antibody, PBS Only (Capture)

Catalog Number: 60170-1-PBS

Basic Information

Catalog Number: 60170-1-PBS	GenBank Accession Number: BC051340	Purification Method: Protein G purification
Size: 1mg/ml	GeneID (NCBI): 57124	CloneNo.: 1F9B4
Source: Mouse	UNIPROT ID: Q9HCU0	
Isotype: IgG1	Full Name: CD248 molecule, endosialin	
Immunogen Catalog Number: AG13334	Calculated MW: 757 aa, 81 kDa	
	Observed MW: 150-160 kDa	

Applications

Tested Applications:
WB, IHC, Cytometric bead array, Indirect ELISA

Species Specificity:
human, mouse

Background Information

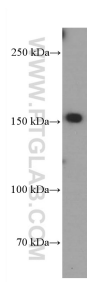
TEM1 (Tumor endothelial marker 1), also named as CD248, Endosialin and CD164L1, is a C-type lectin-like domain (CTLD) containing type I transmembrane glycoprotein. It is now considered to be a highly selective marker for activated perivascular and stromal cells, detected in most cancers and at least some inflammatory disorders. CD248 plays a role in tumor angiogenesis. It is a potential diagnostic tool and therapeutic target of inflammatory and malignant disease. Two isoforms of human TEM1 exist. The calculated molecular weights of the two isoforms are 81 kDa and 46 kDa, respectively. Native TEM1 can be glycosylated, and the glycosylated form has a larger apparent molecular weight than 81 kDa.

Storage

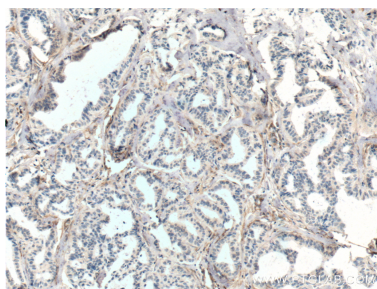
Storage:
Store at -80°C.
The product is shipped with ice packs. Upon receipt, store it immediately at -80°C

Storage Buffer:
PBS Only

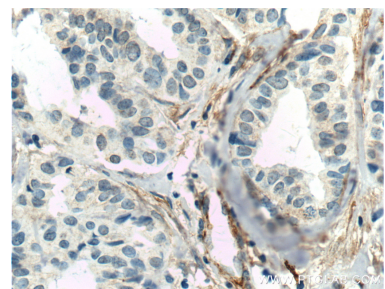
Selected Validation Data



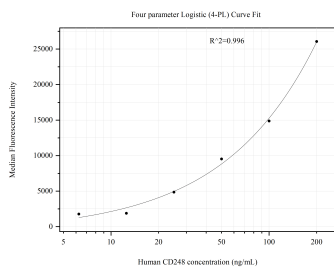
HUVEC cells were subjected to SDS PAGE followed by western blot with 60170-1-Ig (TEM1 antibody at dilution of 1:2000 incubated at room temperature for 1.5 hours. This data was developed using the same antibody clone with 60170-1-PBS in a different storage buffer formulation.



Immunohistochemical analysis of paraffin-embedded human breast cancer tissue slide using 60170-1-Ig (TEM1 antibody at dilution of 1:250 (under 10x lens). Heat mediated antigen retrieval with Tris-EDTA buffer (pH 9.0). This data was developed using the same antibody clone with 60170-1-PBS in a different storage buffer formulation.



Immunohistochemical analysis of paraffin-embedded human breast cancer tissue slide using 60170-1-Ig (TEM1 antibody at dilution of 1:250 (under 40x lens). Heat mediated antigen retrieval with Tris-EDTA buffer (pH 9.0). This data was developed using the same antibody clone with 60170-1-PBS in a different storage buffer formulation.



Cytometric bead array standard curve of MP51052-1, CD248 Monoclonal Matched Antibody Pair, PBS Only. Capture antibody: 60170-1-PBS. Detection antibody: 60170-3-PBS. Standard:Ag13334. Range: 6.25-200 ng/mL