

For Research Use Only

MSH2 Monoclonal antibody, PBS Only (Capture)

Catalog Number: 60161-1-PBS

Featured Product



Basic Information

Catalog Number:

60161-1-PBS

Concentration:

1000 µg/ml

Source:

Mouse

Isotype:

IgG1

Immunogen Catalog Number:

AG7835

GenBank Accession Number:

BC021566

GeneID (NCBI):

4436

UNIPROT ID:

P43246

Full Name:

mutS homolog 2, colon cancer, nonpolyposis type 1 (E. coli)

Calculated MW:

105 kDa

Observed MW:

105 kDa

Purification Method:

Protein A purification

CloneNo.:

2H5F5

Applications

Tested Applications:

WB, IHC, IF/ICC, Cytometric bead array, Sandwich ELISA, Indirect ELISA, Sample test

Species Specificity:

human

Background Information

MSH2, named for its homologous to the E.coli MutS gene, takes part in DNA mismatch repair(MMR) to maintain the stability of DNA. MSH2 contains a helix-turn-helix domain, which responds for binding to DNA. Also, MSH2 has a direct role in mutation avoidance and micro-satellite stability in cell.

Storage

Storage:

Store at -80°C.

The product is shipped with ice packs. Upon receipt, store it immediately at -80°C

Storage Buffer:

PBS Only

For technical support and original validation data for this product please contact:

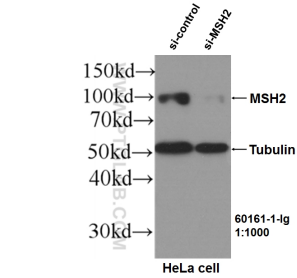
T: 4006900926

E: Proteintech-CN@ptglab.com

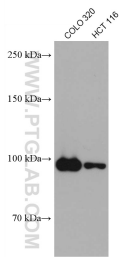
W: ptgcn.com

This product is exclusively available under Proteintech Group brand and is not available to purchase from any other manufacturer.

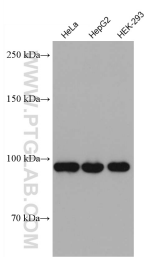
Selected Validation Data



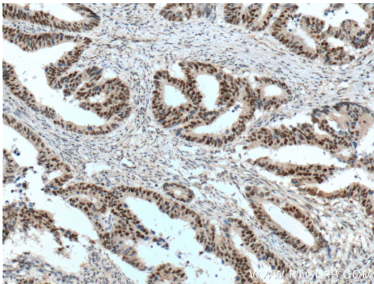
WB results of MSH2 (60161-1-Ig, 1:1000) antibody with si-Control and si-MSH2 transfected HeLa cells.. This data was developed using the same antibody clone with 60161-1-PBS in a different storage buffer formulation.



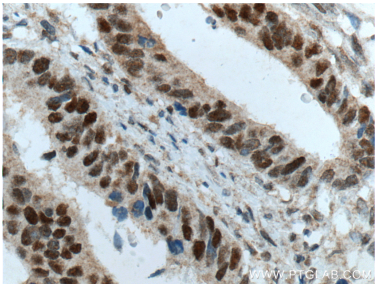
Various lysates were subjected to SDS PAGE followed by western blot with 60161-1-Ig (MSH2 antibody) at dilution of 1:10000 incubated at room temperature for 1.5 hours. This data was developed using the same antibody clone with 60161-1-PBS in a different storage buffer formulation.



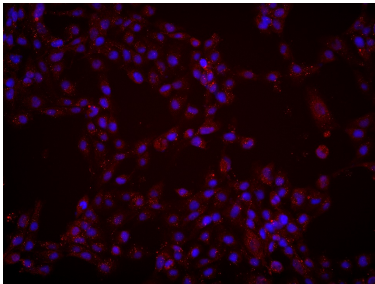
Various lysates were subjected to SDS PAGE followed by western blot with 60161-1-Ig (MSH2 antibody) at dilution of 1:10000 incubated at room temperature for 1.5 hours. This data was developed using the same antibody clone with 60161-1-PBS in a different storage buffer formulation.



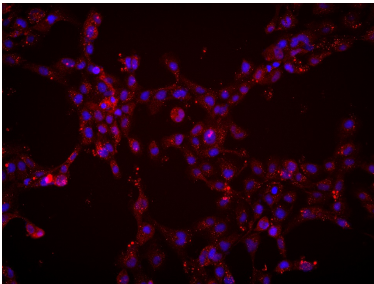
Immunohistochemical analysis of paraffin-embedded human colon cancer tissue slide using 60161-1-Ig (MSH2 Antibody) at dilution of 1:800 (under 10x lens). Heat mediated antigen retrieval with Tris-EDTA buffer (pH 9.0). This data was developed using the same antibody clone with 60161-1-PBS in a different storage buffer formulation.



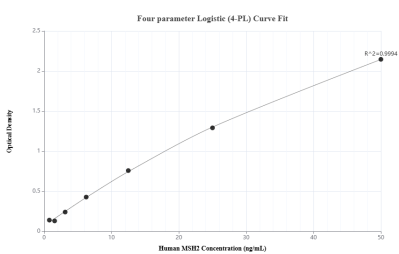
Immunohistochemical analysis of paraffin-embedded human colon cancer tissue slide using 60161-1-Ig (MSH2 Antibody) at dilution of 1:800 (under 40x lens). Heat mediated antigen retrieval with Tris-EDTA buffer (pH 9.0). This data was developed using the same antibody clone with 60161-1-PBS in a different storage buffer formulation.



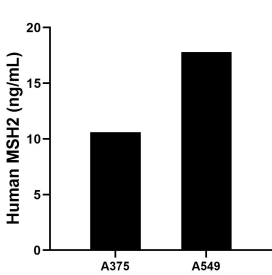
Immunofluorescent analysis of (4% PFA) fixed A431 cells using MSH2 antibody (60161-1-Ig, Clone: 2H5F5) at dilution of 1:2277 and Multi-rAb Coralite® Plus 647-Goat Anti-Mouse Recombinant Secondary Antibody (H+L) (Cat.NO. RGAM005). This data was developed using the same antibody clone with 60161-1-PBS in a different storage buffer formulation.



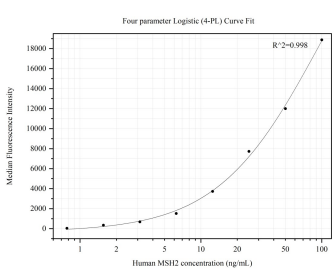
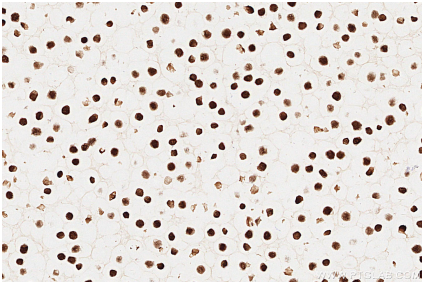
Immunofluorescent analysis of (4% PFA) fixed A431 cells using MSH2 antibody (60161-1-Ig, Clone: 2H5F5) at dilution of 1:1000 and Multi-rAb Coralite® Plus 647-Goat Anti-Mouse Recombinant Secondary Antibody (H+L) (Cat.NO. RGAM005). This data was developed using the same antibody clone with 60161-1-PBS in a different storage buffer formulation.



Sandwich ELISA standard curve of MP50235-1, Human MSH2 Monoclonal Matched Antibody Pair - PBS only. 60161-1-PBS was coated to a plate as the capture antibody and incubated with serial dilutions of standard Ag7835. 60161-2-PBS was HRP conjugated as the detection antibody. Range: 0.781-50 ng/mL



The mean MSH2 concentration was determined to be 10.60 ng/mL in A375 cell extract based on a 2.0 mg/mL extract load and 17.80 ng/mL in A549 cell extract based on a 2.6 mg/mL extract load.



Immunohistochemical analysis of paraffin-embedded Ramos cells slide using 60161-1-Ig (MSH2 antibody) at dilution of 1:1000 (under 40x lens). Heat mediated antigen retrieval with Tris-EDTA buffer (pH 9.0). This data was developed using the same antibody clone with 60161-1-PBS in a different storage buffer formulation.

Cytometric bead array standard curve of MP50235-1, MSH2 Monoclonal Matched Antibody Pair, PBS Only. Capture antibody: 60161-1-PBS. Detection antibody: 60161-2-PBS. Standard:Ag7835. Range: 0.781-100 ng/mL