

For Research Use Only

# MSH2 Monoclonal antibody

Catalog Number: 60161-1-Ig

Featured Product

2 Publications



## Basic Information

Catalog Number:

60161-1-Ig

Size:

1000 µg/ml

Source:

Mouse

Isotype:

IgG1

Immunogen Catalog Number:

AG7835

GenBank Accession Number:

BC021566

GeneID (NCBI):

4436

UNIPROT ID:

P43246

Full Name:

mutS homolog 2, colon cancer,  
nonpolyposis type 1 (E. coli)

Calculated MW:

105 kDa

Observed MW:

105 kDa

Purification Method:

Protein A purification

CloneNo.:

2H5F5

Recommended Dilutions:

WB 1:5000-1:50000

IHC 1:20-1:200

## Applications

Tested Applications:

IHC, WB, ELISA

Cited Applications:

WB, IHC

Species Specificity:

human

Cited Species:

human, mouse

**Note-IHC: suggested antigen retrieval with TE buffer pH 9.0; (\*) Alternatively, antigen retrieval may be performed with citrate buffer pH 6.0**

Positive Controls:

WB : HeLa cells, COLO 320 cells, HCT 116 cells, HepG2 cells, HEK-293 cells

IHC : human colon cancer tissue,

## Background Information

MSH2, named for its homologous to the E.coli MutS gene, takes part in DNA mismatch repair(MMR) to maintain the stability of DNA. MSH2 contains a helix-turn-helix domain, which responds for binding to DNA. Also, MSH2 has a direct role in mutation avoidance and micro-satellite stability in cell.

## Notable Publications

Author	Pubmed ID	Journal	Application
Qijing Wu	34933913	Cancer Immunol Res	IHC
Mingyang Li	37914149	Transl Res	WB

## Storage

Storage:

Store at -20°C. Stable for one year after shipment.

Storage Buffer:

PBS with 0.02% sodium azide and 50% glycerol pH 7.3.

Aliquoting is unnecessary for -20°C storage

For technical support and original validation data for this product please contact:

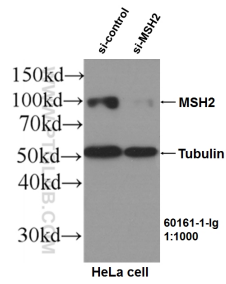
T: 4006900926

E: Proteintech-CN@ptglab.com

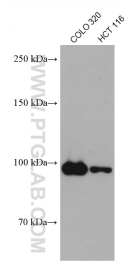
W: ptgcn.com

**This product is exclusively available under Proteintech Group brand and is not available to purchase from any other manufacturer.**

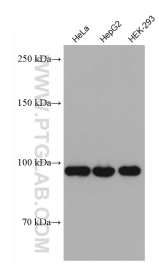
## Selected Validation Data



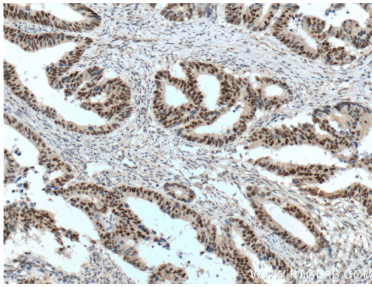
WB results of MSH2 (60161-1-Ig, 1:1000) antibody with si-Control and si-MSH2 transfected HeLa cells..



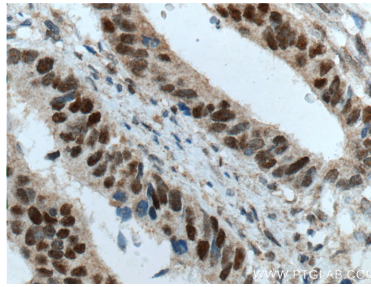
Various lysates were subjected to SDS PAGE followed by western blot with 60161-1-Ig (MSH2 antibody) at dilution of 1:10000 incubated at room temperature for 1.5 hours.



Various lysates were subjected to SDS PAGE followed by western blot with 60161-1-Ig (MSH2 antibody) at dilution of 1:10000 incubated at room temperature for 1.5 hours.



Immunohistochemical analysis of paraffin-embedded human colon cancer tissue slide using 60161-1-Ig (MSH2 Antibody) at dilution of 1:800 (under 10x lens). Heat mediated antigen retrieval with Tris-EDTA buffer (pH 9.0).



Immunohistochemical analysis of paraffin-embedded human colon cancer tissue slide using 60161-1-Ig (MSH2 Antibody) at dilution of 1:800 (under 40x lens). Heat mediated antigen retrieval with Tris-EDTA buffer (pH 9.0).