

For Research Use Only

Luciferase Monoclonal antibody

Catalog Number: 60158-1-Ig **2 Publications**



Basic Information

Catalog Number:

60158-1-Ig

Size:

1000 µg/ml

Source:

Mouse

Isotype:

IgG2a

Immunogen Catalog Number:

AG13000

GenBank Accession Number:

AY015993

GeneID (NCBI):

Full Name:

Calculated MW:

20 kDa

Purification Method:

Caprylic acid/ammonium sulfate precipitation

CloneNo.:

1F2C12

Recommended Dilutions:

WB 1:500-1:3000

Applications

Tested Applications:

WB, ELISA

Cited Applications:

WB

Species Specificity:

Cited Species:

human, mouse

Positive Controls:

WB : Recombinant protein,

Background Information

Luciferase is a generic term for the class of oxidative enzymes used in bioluminescence and is distinct from a photoprotein. The immunogen of this antibody the Luciferase (AY015993) from the copepod marine organism *Gaussia princeps*. This antibody is a McAb to Luciferase.

Notable Publications

Author	Pubmed ID	Journal	Application
Yuanjun Zhu	36793212	Mol Ther	WB
Maria Merezko	24932508	PLoS One	WB

Storage

Storage:

Store at -20°C. Stable for one year after shipment.

Storage Buffer:

PBS with 0.02% sodium azide and 50% glycerol pH 7.3.

Aliquoting is unnecessary for -20°C storage

For technical support and original validation data for this product please contact:

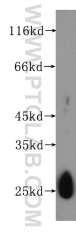
T: 4006900926

E: Proteintech-CN@ptglab.com

W: ptgcn.com

This product is exclusively available under Proteintech Group brand and is not available to purchase from any other manufacturer.

Selected Validation Data



Recombinant protein were subjected to SDS PAGE followed by western blot with 60158-1-Ig (dNGLUC antibody) at dilution of 1:1500 incubated at room temperature for 1.5 hours.