

For Research Use Only

# CXCL8/IL-8 Monoclonal antibody

Catalog Number: 60141-1-Ig **8 Publications**



## Basic Information

Catalog Number:

60141-1-Ig

Size:

500 µg/ml

Source:

Mouse

Isotype:

IgG1

Immunogen Catalog Number:

AG10552

GenBank Accession Number:

BC013615

GeneID (NCBI):

3576

ENSEMBL Gene ID:

ENSG00000169429

UNIPROT ID:

P10145

Full Name:

interleukin 8

Calculated MW:

99 aa, 11 kDa

Purification Method:

Caprylic acid/ammonium sulfate precipitation

CloneNo.:

3C4E2

## Applications

Tested Applications:

IHC, WB, ELISA

Cited Applications:

WB, IHC

Species Specificity:

human

Cited Species:

human

## Background Information

### Notable Publications

Author	Pubmed ID	Journal	Application
Alisson Clemenceau	32967276	Cancers (Basel)	IHC
Mirette Hanna	29102166	Cytokine	IHC
Danielle Larouche	27903840	Integr Cancer Ther	

## Storage

Storage:

Store at -20°C. Stable for one year after shipment.

Storage Buffer:

PBS with 0.02% sodium azide and 50% glycerol pH 7.3.

Aliquoting is unnecessary for -20°C storage

For technical support and original validation data for this product please contact:

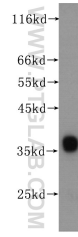
T: 4006900926

E: [Proteintech-CN@ptglab.com](mailto:Proteintech-CN@ptglab.com)

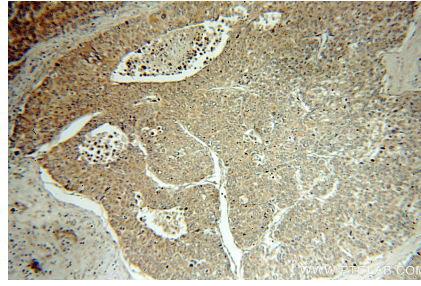
W: [ptgcn.com](http://ptgcn.com)

This product is exclusively available under Proteintech Group brand and is not available to purchase from any other manufacturer.

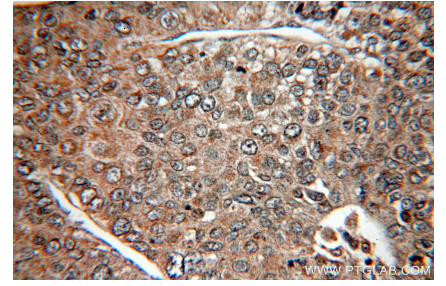
## Selected Validation Data



Recombinant protein were subjected to SDS PAGE followed by western blot with 60141-1-Ig (IL8/CXCL8 antibody) at dilution of 1:500 incubated at room temperature for 1.5 hours.



Immunohistochemical analysis of paraffin-embedded human liver cancer using 60141-1-Ig(IL8/CXCL8 antibody) at dilution of 1:50 (under 10x lens).



Immunohistochemical analysis of paraffin-embedded human liver cancer using 60141-1-Ig(IL8/CXCL8 antibody) at dilution of 1:50 (under 40x lens).