

Gastroke 1 Monoclonal antibody

Catalog Number: 60130-1-Ig

Basic Information

Catalog Number: 60130-1-Ig	GenBank Accession Number: BC059778	Purification Method: Protein A purification
Concentration: 1500 µg/ml	GeneID (NCBI): 56287	CloneNo.: 3C10E3
Source: Mouse	UNIPROT ID: Q9NS71	Recommended Dilutions: WB 1:5000-1:50000 IHC 1:50-1:500 IF-P 1:200-1:800
Isotype: IgG2a	Full Name: gastroke 1	
Immunogen Catalog Number: AG6091	Calculated MW: 22 kDa Observed MW: 22 kDa	

Applications

Tested Applications:

WB, IHC, IF-P, ELISA

Species Specificity:

human, rat, pig, mouse

Note-IHC: suggested antigen retrieval with TE buffer pH 9.0; (*) Alternatively, antigen retrieval may be performed with citrate buffer pH 6.0

Positive Controls:

WB : human stomach tissue, rat stomach tissue

IHC : human stomach tissue,

IF-P : human stomach tissue, mouse stomach tissue

Background Information

Gastroke 1 (GKN1), a stomach-specific protein also known as 18 kDa antrum mucosa protein (AMP-18) or foveolin, belongs to the gastroke family of gastric mucus cell-secreted proteins. The human GKN1 gene has been localized in a region of chromosome 2p13 of about 6 kb and contains 6 exons. GKN1 is expressed only in normal human stomach, but is absent from gastric adenocarcinomas, gastro-esophageal adenocarcinoma cell lines, and other normal and tumor gastro-intestinal tissues. GKN1 may play an important role in normal gastric function and may be a gastric tumour suppressor.

Storage

Storage:

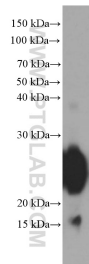
Store at -20°C. Stable for one year after shipment.

Storage Buffer:

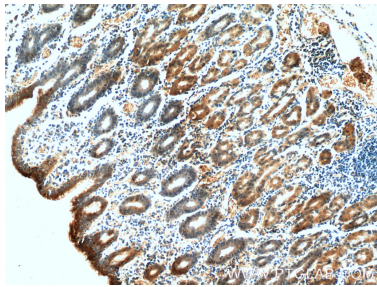
PBS with 0.02% sodium azide and 50% glycerol, pH7.3

Aliquoting is unnecessary for -20°C storage

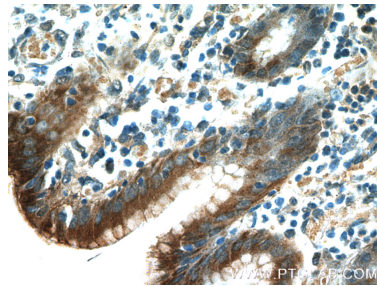
Selected Validation Data



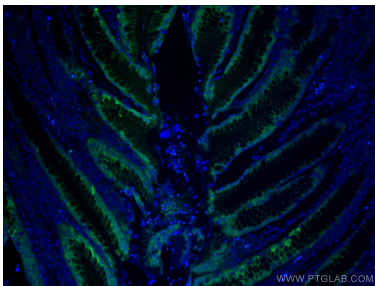
human stomach tissue were subjected to SDS PAGE followed by western blot with 60130-1-Ig (GKN1 Antibody) at dilution of 1:20000 incubated at room temperature for 1.5 hours.



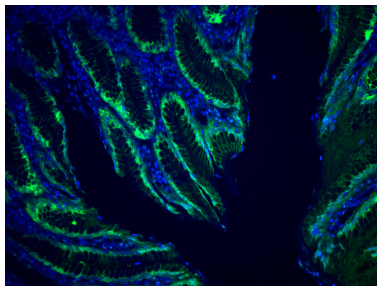
Immunohistochemical analysis of paraffin-embedded human stomach tissue slide using 60130-1-Ig (GKN1 Antibody) at dilution of 1:200 (under 10x lens).



Immunohistochemical analysis of paraffin-embedded human stomach tissue slide using 60130-1-Ig (GKN1 Antibody) at dilution of 1:200 (under 40x lens).



Immunofluorescent analysis of (4% PFA) fixed human stomach tissue using Gastrokeine 1 antibody (60130-1-Ig, Clone: 3C10E3) at dilution of 1:400 and CoraLite®488-Conjugated Goat Anti-Mouse IgG(H+L).



Immunofluorescent analysis of (4% PFA) fixed human stomach tissue using Gastrokeine 1 antibody (60130-1-Ig, Clone: 3C10E3) at dilution of 1:400 and CoraLite®488-Conjugated Goat Anti-Mouse IgG(H+L).