

For Research Use Only

RENALASE Monoclonal antibody

Catalog Number: 60128-1-Ig **3 Publications**



Basic Information

Catalog Number: 60128-1-Ig	GenBank Accession Number: BC005364	Purification Method: Protein G purification
Size: 1000 ug/ml	GeneID (NCBI): 55328	CloneNo.: 3A12F5
Source: Mouse	UNIPROT ID: Q5VYX0	Recommended Dilutions: WB 1:2000-1:10000 IHC 1:20-1:200
Isotype: IgG1	Full Name: chromosome 10 open reading frame 59	
Immunogen Catalog Number: AG13061	Calculated MW: 38 kDa	
	Observed MW: 38 kDa	

Applications

Tested Applications: WB, IHC, ELISA	Positive Controls:
Cited Applications: WB	WB : OS-RC-2 cells, A431 cells, MG-63 cells, ACHN cells, Caki-1 cells
Species Specificity: human	IHC : human kidney tissue, human skeletal muscle tissue
Cited Species: human, mouse	

Note-IHC: suggested antigen retrieval with TE buffer pH 9.0; (*) Alternatively, antigen retrieval may be performed with citrate buffer pH 6.0

Background Information

RNLS, also named as Renalase, C10orf59 and MAO-C, belongs to the renalase family. It is probable FAD-dependent amine oxidase secreted by the kidney, which circulates in blood and modulates cardiac function and systemic blood pressure. RNLS degrades catecholamines such as dopamine, norepinephrine and epinephrine in vitro. It lowers blood pressure in vivo by decreasing cardiac contractility and heart rate and preventing a compensatory increase in peripheral vascular tone, suggesting a causal link to the increased plasma catecholamine and heightened cardiovascular risk. High concentrations of catecholamines activate plasma renalase and promotes its secretion and synthesis. RNLS has physiologically relevant catecholamine-oxidizing activity. (PMID:15841207) This antibody is specific to RNLS.

Notable Publications

Author	Pubmed ID	Journal	Application
Desir Gary V GV	23107895	J Am Soc Hypertens	WB
Tara MacDonald	38915698	bioRxiv	WB
Desir Gary V GV	24137013	Nephrol Dial Transplant	WB

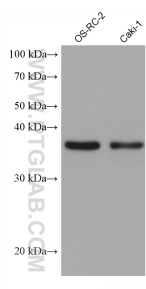
Storage

Storage:
Store at -20°C. Stable for one year after shipment.
Storage Buffer:
PBS with 0.02% sodium azide and 50% glycerol pH 7.3.
Aliquoting is unnecessary for -20°C storage

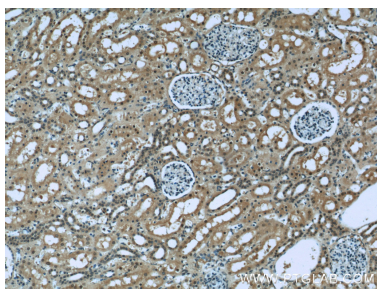
For technical support and original validation data for this product please contact:
T: 4006900926 E: Proteintech-CN@ptglab.com W: ptgcn.com

This product is exclusively available under Proteintech Group brand and is not available to purchase from any other manufacturer.

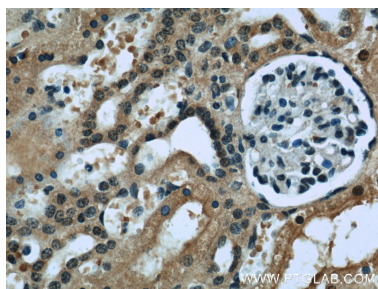
Selected Validation Data



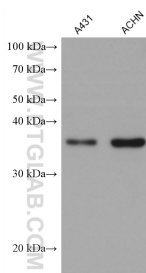
Various lysates were subjected to SDS PAGE followed by western blot with 60128-1-Ig (RENALASE antibody) at dilution of 1:5000 incubated at room temperature for 1.5 hours.



Immunohistochemical analysis of paraffin-embedded human kidney slide using 60128-1-Ig (RENALASE Antibody) at dilution of 1:50.



Immunohistochemical analysis of paraffin-embedded human kidney slide using 60128-1-Ig (RENALASE Antibody) at dilution of 1:50.



Various lysates were subjected to SDS PAGE followed by western blot with 60128-1-Ig (RENALASE antibody) at dilution of 1:5000 incubated at room temperature for 1.5 hours.