

For Research Use Only

RABEP2 Monoclonal antibody

Catalog Number: 60125-1-Ig **Featured Product**



Basic Information

Catalog Number: 60125-1-Ig	GenBank Accession Number: BC058900	Purification Method: Protein A purification
Size: 1400 µg/ml	GeneID (NCBI): 79874	CloneNo.: 1A4A4
Source: Mouse	UNIPROT ID: Q9H5N1	Recommended Dilutions: WB 1:500-1:1000 IHC 1:50-1:500
Isotype: IgG1	Full Name: rabaptin, RAB GTPase binding effector protein 2	
Immunogen Catalog Number: AG6197	Calculated MW: 64 kDa	
	Observed MW: 62 kDa	

Applications

Tested Applications:

IHC, WB, ELISA

Species Specificity:

human, rat, pig

Note-IHC: suggested antigen retrieval with TE buffer pH 9.0; (*) Alternatively, antigen retrieval may be performed with citrate buffer pH 6.0

Positive Controls:

WB : HSC-T6 cells, Jurkat cells, PC-3 cells

IHC : human prostate cancer tissue, human breast cancer tissue

Background Information

RABEP2, also named as RABPT5B, plays a role in membrane trafficking and in homotypic early endosome fusion. It has two isoforms with MW 59-63 kDa.

Storage

Storage:

Store at -20°C. Stable for one year after shipment.

Storage Buffer:

PBS with 0.02% sodium azide and 50% glycerol pH 7.3.

Aliquoting is unnecessary for -20°C storage

For technical support and original validation data for this product please contact:

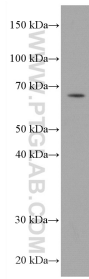
T: 4006900926

E: Proteintech-CN@ptglab.com

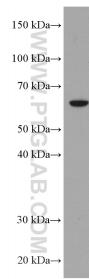
W: ptgcn.com

This product is exclusively available under Proteintech Group brand and is not available to purchase from any other manufacturer.

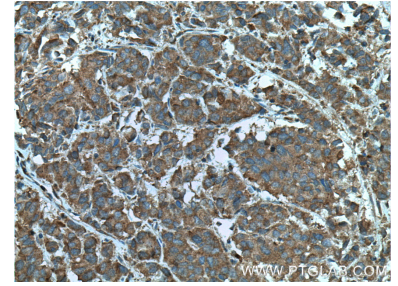
Selected Validation Data



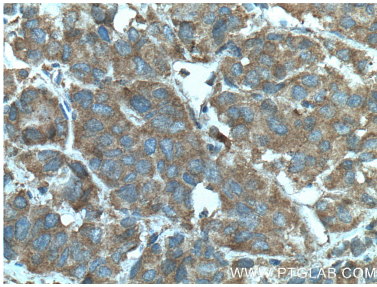
Jurkat cells were subjected to SDS PAGE followed by western blot with 60125-1-Ig (RABEP2 antibody) at dilution of 1:1000 incubated at room temperature for 1.5 hours.



HSC-T6 cells were subjected to SDS PAGE followed by western blot with 60125-1-Ig (RABEP2 antibody) at dilution of 1:1000 incubated at room temperature for 1.5 hours.



Immunohistochemical analysis of paraffin-embedded human prostate cancer tissue slide using 60125-1-Ig (RABEP2 antibody) at dilution of 1:100 (under 10x lens. Heat mediated antigen retrieval with Tris-EDTA buffer (pH 9.0).



Immunohistochemical analysis of paraffin-embedded human prostate cancer tissue slide using 60125-1-Ig (RABEP2 antibody) at dilution of 1:100 (under 40x lens. Heat mediated antigen retrieval with Tris-EDTA buffer (pH 9.0).