

For Research Use Only

# CXCL16 Monoclonal antibody, PBS Only (Detector)



Catalog Number: 60123-1-PBS

Featured Product

## Basic Information

Catalog Number:

60123-1-PBS

Size:

1mg/ml

Source:

Mouse

Isotype:

IgG2a

Immunogen Catalog Number:

AG4883

GenBank Accession Number:

BC017588

GeneID (NCBI):

58191

UNIPROT ID:

Q9H2A7

Full Name:

chemokine (C-X-C motif) ligand 16

Calculated MW:

273 aa, 30 kDa

Observed MW:

35 kDa, 60 kDa

Purification Method:

Protein A purification

CloneNo.:

2H7B3

## Applications

Tested Applications:

WB, Cytometric bead array, Indirect ELISA

Species Specificity:

human, mouse

## Background Information

CXCL16 is a recently discovered cytokine belonging to the CXC chemokine family, which is synthesised in plasmacytoid dendritic cell as a transmembrane molecule. It exists in a transmembrane and soluble form. The transmembrane form of CXCL16 functions as an adhesion molecule for CXCR6-expressing cells, whereas the soluble form of CXCL16 mediates infiltration of circulating cells into sites of injury. CXCL16, has been proposed as an important pathogenic mediator in inflammatory diseases, including rheumatoid arthritis, glomerulonephritis, or prostate cancer. CXCL16 has been implicated in some forms of renal disease such as lupus nephritis and antglomerular basement membrane nephritis. CXCL16 also plays a pivotal role in the pathogenesis of angiotensin II-induced renal injury and fibrosis through regulation of macrophage and T cell infiltration and bone marrow-derived fibroblast accumulation.

## Storage

Storage:

Store at -80°C.

The product is shipped with ice packs. Upon receipt, store it immediately at -80°C

Storage Buffer:

PBS Only

For technical support and original validation data for this product please contact:

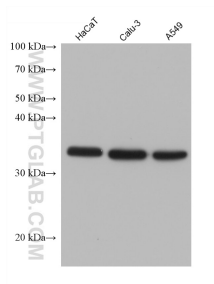
T: 4006900926

E: [Proteintech-CN@ptglab.com](mailto:Proteintech-CN@ptglab.com)

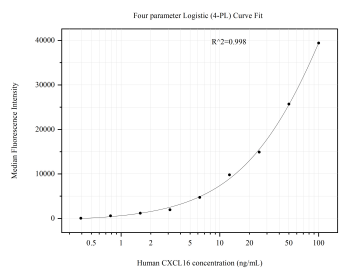
W: [ptgcn.com](http://ptgcn.com)

This product is exclusively available under Proteintech Group brand and is not available to purchase from any other manufacturer.

## Selected Validation Data



Various lysates were subjected to SDS PAGE followed by western blot with 60123-1-Ig (CXCL16 antibody) at dilution of 1:1000 incubated at room temperature for 1.5 hours. This data was developed using the same antibody clone with 60123-1-PBS in a different storage buffer formulation.



Cytometric bead array standard curve of MP51127-1, CXCL16 Monoclonal Matched Antibody Pair, PBS Only. Capture antibody: 60123-2-PBS. Detection antibody: 60123-1-PBS. Standard: Ag4883. Range: 0.391-100 ng/mL.