

For Research Use Only

# NR2F6 Monoclonal antibody

Catalog Number: 60117-1-Ig

Featured Product

3 Publications



## Basic Information

Catalog Number:

60117-1-Ig

Concentration:

493 µg/ml

Source:

Mouse

Isotype:

IgG1

Immunogen Catalog Number:

AG7614

GenBank Accession Number:

BC002669

GeneID (NCBI):

2063

UNIPROT ID:

P10588

Full Name:

nuclear receptor subfamily 2, group F, member 6

Calculated MW:

43 kDa

Observed MW:

42 kDa

Purification Method:

Protein G purification

CloneNo.:

2H2D11

Recommended Dilutions:

WB 1:500-1:2000

IHC 1:20-1:200

## Applications

Tested Applications:

WB, IHC, ELISA

Cited Applications:

WB, IHC

Species Specificity:

human

Cited Species:

human

Positive Controls:

WB : MCF-7 cells,

IHC : human kidney tissue,

**Note-IHC: suggested antigen retrieval with TE buffer pH 9.0; (\*) Alternatively, antigen retrieval may be performed with citrate buffer pH 6.0**

## Background Information

NR2F6 belongs to NR2F subfamily members, which have their roles in the regulation of neurogenesis, organogenesis, and cellular differentiation during embryonic development [PMID:15875024]. NR2F6 acts as transcription factor by binding to a TGACCT direct-repeat motif and has been established in controlling facets of central nervous system (CNS) [12690040]. It is a nuclear attenuator that directly interferes with DNA binding of NF-AT and, subsequently, transcriptional activity of the NF-AT-dependent IL-17 expression. Otherwise, NR2F6 negatively interfered with transcriptional cytokine responses and acted as a barrier against autoimmunity [PMID:18701084].

## Notable Publications

Author	Pubmed ID	Journal	Application
Chunhao Niu	27775588	Int J Mol Sci	WB, IHC
Han Li	30895619	Int J Cancer	IHC
Hyungsoo Kim	37406115	Sci Adv	WB

## Storage

Storage:

Store at -20°C. Stable for one year after shipment.

Storage Buffer:

PBS with 0.02% sodium azide and 50% glycerol pH 7.3.

Aliquoting is unnecessary for -20°C storage

For technical support and original validation data for this product please contact:

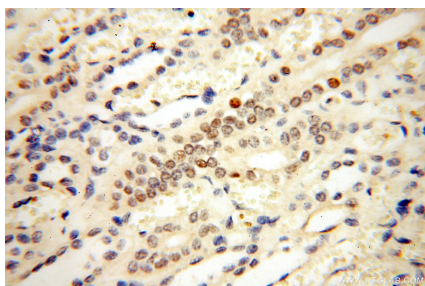
T: 4006900926

E: Proteintech-CN@ptglab.com

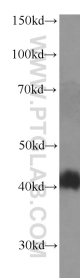
W: ptgcn.com

**This product is exclusively available under Proteintech Group brand and is not available to purchase from any other manufacturer.**

## Selected Validation Data



Immunohistochemical analysis of paraffin-embedded human kidney using 60117-1-Ig(NR2F6 antibody) at dilution of 1:50 (under 40 $\times$  lens).



MCF-7 cells were subjected to SDS PAGE followed by western blot with 60117-1-Ig (NR2F6 Antibody) at dilution of 1:1000 incubated at room temperature for 1.5 hours.