

# APOBEC3G Monoclonal antibody

Catalog Number: 60100-1-Ig

Featured Product

2 Publications

## Basic Information

Catalog Number:

60100-1-Ig

Size:

753 µg/ml

Source:

Mouse

Isotype:

IgG2b

Immunogen Catalog Number:

AG7770

GenBank Accession Number:

BC024268

GeneID (NCBI):

60489

UNIPROT ID:

Q9HC16

Full Name:

apolipoprotein B mRNA editing enzyme, catalytic polypeptide-like 3G

Calculated MW:

46 kDa

Observed MW:

46 kDa

Purification Method:

Protein A purification

CloneNo.:

5G10A8

Recommended Dilutions:

WB 1:200-1:1000

IHC 1:20-1:200

IF/ICC 1:10-1:100

## Applications

Tested Applications:

IF/ICC, IHC, WB, ELISA

Cited Applications:

WB, IHC

Species Specificity:

human, mouse, rat

Cited Species:

human

**Note-IHC: suggested antigen retrieval with TE buffer pH 9.0; (\*) Alternatively, antigen retrieval may be performed with citrate buffer pH 6.0**

Positive Controls:

WB : A375 cells, PC-3 cells

IHC : human breast cancer tissue,

IF/ICC : C6 cells,

## Background Information

APOBEC3G (apolipoprotein B mRNA-editing enzyme, catalytic polypeptide-like 3G, also known as CEM15), a member of the APOBEC family of cytidine deaminase-editing enzymes, is a potent DNA mutator that can be packaged into budding retroviruses. HA-tagged APOBEC3G can be expressed in 293T cells, which do not express APOBEC3G endogenously, in addition 22- and 24-kDa proteolytic degradation fragments can be detected by western blot (PMID:14672928). It has 2 isoforms produced by alternative splicing.

## Notable Publications

Author	Pubmed ID	Journal	Application
Ruidong Chen	28098260	Sci Rep	WB
Huanrong Lan	24753761	Int J Clin Exp Med	IHC

## Storage

Storage:

Store at -20°C. Stable for one year after shipment.

Storage Buffer:

PBS with 0.02% sodium azide and 50% glycerol pH 7.3.

Aliquoting is unnecessary for -20°C storage

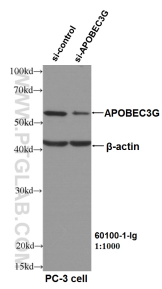
For technical support and original validation data for this product please contact:

T: 4006900926

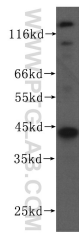
E: [Proteintech-CN@ptglab.com](mailto:Proteintech-CN@ptglab.com)W: [ptgcn.com](http://ptgcn.com)

**This product is exclusively available under Proteintech Group brand and is not available to purchase from any other manufacturer.**

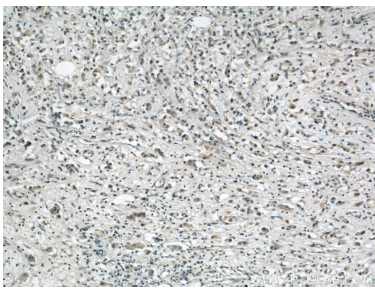
Selected Validation Data



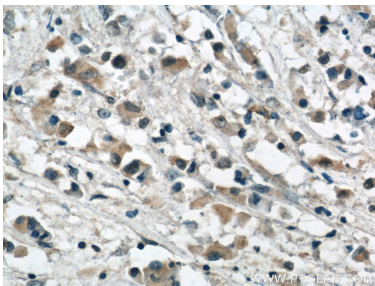
WB result of APOBEC3G antibody (60100-1-Ig, 1:1000) with si-Control and si-APOBEC3G transfected PC-3 cells.



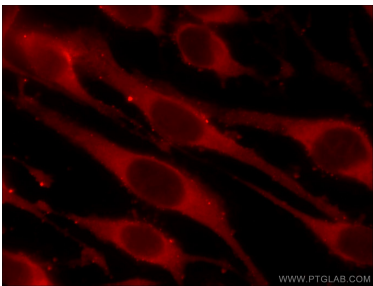
A375 cells were subjected to SDS PAGE followed by western blot with 60100-1-Ig (APOBEC3G antibody) at dilution of 1:200 incubated at room temperature for 1.5 hours.



Immunohistochemical analysis of paraffin-embedded human breast cancer using 60100-1-Ig(APOBEC3G antibody) at dilution of 1:50 (under 10x lens).



Immunohistochemical analysis of paraffin-embedded human breast cancer using 60100-1-Ig(APOBEC3G antibody) at dilution of 1:50 (under 40x lens).



Immunofluorescent analysis of C6 cells using 60100-1-Ig (APOBEC3G antibody) at dilution of 1:25 and Rhodamine-Goat anti-Mouse IgG.