

For Research Use Only

ITM2C Monoclonal antibody, PBS Only



Catalog Number: 60095-1-PBS

Basic Information

Catalog Number: 60095-1-PBS	GenBank Accession Number: BC025742	Purification Method: Protein A purification
Size: 1 mg/ml	GeneID (NCBI): 81618	CloneNo.: 2E8G11
Source: Mouse	UNIPROT ID: Q9NQX7	
Isotype: IgG2a	Full Name: integral membrane protein 2C	
Immunogen Catalog Number: AG4409	Calculated MW: 230aa, 26 kDa; 267aa, 30 kDa	
	Observed MW: 35 kDa	

Applications

Tested Applications:
IF, Indirect ELISA

Species Specificity:
human

Background Information

The Integral membrane protein 2C (ITM2C) is a type II integral transmembrane protein belonging to a family composed of at least two other members, ITM2A and ITM2B. ITM2C, often called transmembrane protein BRI3, is highly expressed in brain tissue. Yeast two-hybrid screen system revealed that BRI3 could interact with beta-secretase beta-amyloid protein converting enzyme (BACE)1 and the microtubule-destabilizing protein SCG10 (STMN2). It may play a role in TNF-induced cell death and neuronal differentiation. BRI3 was found to inhibit the various processing of amyloid precursor protein (APP) by blocking the access of alpha- and beta-secretases to APP, competitive inhibition of APP processing by BRI3 may provide a new approach to Alzheimer disease (AD) therapy and prevention.

Storage

Storage:
Store at -80°C.
The product is shipped with ice packs. Upon receipt, store it immediately at -80°C

Storage Buffer:
PBS Only

For technical support and original validation data for this product please contact:

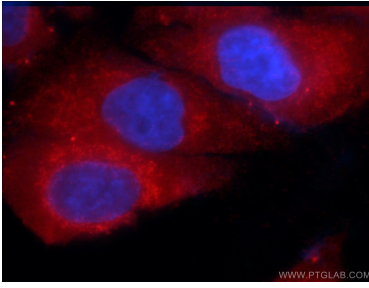
T: 4006900926

E: Proteintech-CN@ptglab.com

W: ptgcn.com

This product is exclusively available under Proteintech Group brand and is not available to purchase from any other manufacturer.

Selected Validation Data



Immunofluorescent analysis of HepG2 cells using 60095-1-Ig (ITM2C antibody) at dilution of 1:50 and Rhodamine-Goat anti-Mouse IgG. This data was developed using the same antibody clone with 60095-1-PBS in a different storage buffer formulation.