

ITM2C Monoclonal antibody

Catalog Number: 60095-1-Ig 1 Publications

Basic Information

Catalog Number: 60095-1-Ig	GenBank Accession Number: BC025742	Purification Method: Protein A purification
Size: 2100 µg/ml	GeneID (NCBI): 81618	CloneNo.: 2E8G11
Source: Mouse	UNIPROT ID: Q9NQX7	Recommended Dilutions: IF/ICC 1:20-1:200
Isotype: IgG2a	Full Name: integral membrane protein 2C	
Immunogen Catalog Number: AG4409	Calculated MW: 230aa, 26 kDa; 267aa, 30 kDa	
	Observed MW: 35 kDa	

Applications

Tested Applications: IF/ICC, ELISA	Positive Controls: IF/ICC : HepG2 cells,
Species Specificity: human	
Cited Species: human	

Background Information

The Integral membrane protein 2C (ITM2C) is a type II integral transmembrane protein belonging to a family composed of at least two other members, ITM2A and ITM2B. ITM2C, often called transmembrane protein BRI3, is highly expressed in brain tissue. Yeast two-hybrid screen system revealed that BRI3 could interact with beta-secretase beta-amyloid protein converting enzyme (BACE)1 and the microtubule-destabilizing protein SCG10 (STMN2). It may play a role in TNF-induced cell death and neuronal differentiation. BRI3 was found to inhibit the various processing of amyloid precursor protein (APP) by blocking the access of alpha- and beta-secretases to APP, competitive inhibition of APP processing by BRI3 may provide a new approach to Alzheimer disease (AD) therapy and prevention.

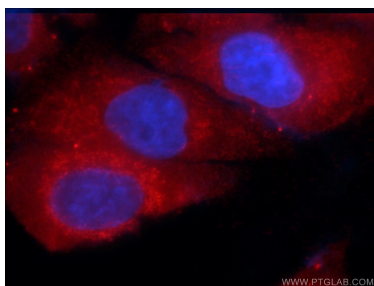
Notable Publications

Author	Pubmed ID	Journal	Application
Noemi Andor	32215369	NAR Genom Bioinform	FC

Storage

Storage:
Store at -20°C. Stable for one year after shipment.
Storage Buffer:
PBS with 0.02% sodium azide and 50% glycerol pH 7.3.
 Aliquoting is unnecessary for -20°C storage

Selected Validation Data



Immunofluorescent analysis of HepG2 cells using 60095-1-Ig (ITM2C antibody) at dilution of 1:50 and Rhodamine-Goat anti-Mouse IgG.