

# IRF5 Monoclonal antibody

Catalog Number: 60088-1-Ig **1 Publications**

## Basic Information

<b>Catalog Number:</b> 60088-1-Ig	<b>GenBank Accession Number:</b> BC004201	<b>Purification Method:</b> Protein A purification
<b>Size:</b> 1000 ug/ml	<b>GeneID (NCBI):</b> 3663	<b>CloneNo.:</b> 2A10C5
<b>Source:</b> Mouse	<b>UNIPROT ID:</b> Q13568	<b>Recommended Dilutions:</b> WB 1:500-1:2000
<b>Isotype:</b> IgG2a	<b>Full Name:</b> interferon regulatory factor 5	IP 0.5-4.0 ug for 1.0-3.0 mg of total protein lysate
<b>Immunogen Catalog Number:</b> AG0841	<b>Calculated MW:</b> 56 kDa	IHC 1:50-1:500
	<b>Observed MW:</b> 63+110 kDa	IF/ICC 1:20-1:200

## Applications

<b>Tested Applications:</b> WB, IHC, IF/ICC, IP, ELISA	<b>Positive Controls:</b>
<b>Cited Applications:</b> WB	<b>WB :</b> HeLa cells, HepG2 cells
<b>Species Specificity:</b> human, mouse, pig	<b>IP :</b> HeLa cells,
<b>Cited Species:</b> human	<b>IHC :</b> human placenta tissue, human breast cancer tissue, human tonsillitis tissue
<b>Note-IHC: suggested antigen retrieval with TE buffer pH 9.0; (*) Alternatively, antigen retrieval may be performed with citrate buffer pH 6.0</b>	
	<b>IF/ICC :</b> HepG2 cells,

## Background Information

IRF5, also named as SLEB10, contains one IRF tryptophan pentad repeat DNA-binding domain and belongs to the IRF family. It is a transcription factor involved in the induction of interferons IFNA and INFB and inflammatory cytokines upon virus infection. It is activated by TLR7 or TLR8 signaling. Genetic variations in IRF5 are associated with susceptibility to inflammatory bowel disease type 14 (IBD14) and systemic lupus erythematosus type 10 (SLEB10).

## Notable Publications

Author	Pubmed ID	Journal	Application
Martin Heather J HJ	17609264	J Virol	WB

## Storage

**Storage:**  
Store at -20°C. Stable for one year after shipment.  
**Storage Buffer:**  
PBS with 0.1% sodium azide and 50% glycerol pH 7.3.  
Aliquoting is unnecessary for -20°C storage

For technical support and original validation data for this product please contact:

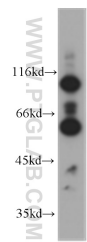
T: 4006900926

E: [Proteintech-CN@ptglab.com](mailto:Proteintech-CN@ptglab.com)

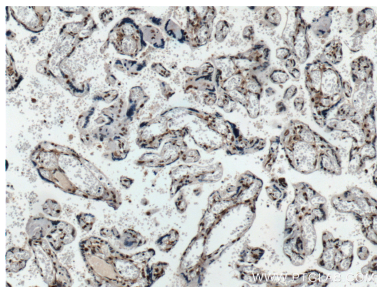
W: [ptgcn.com](http://ptgcn.com)

This product is exclusively available under Proteintech Group brand and is not available to purchase from any other manufacturer.

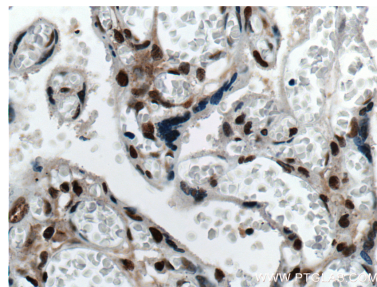
Selected Validation Data



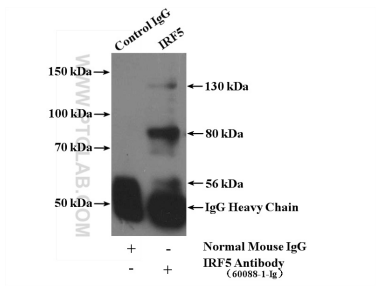
HeLa cells were subjected to SDS PAGE followed by western blot with 60088-1-Ig (IRF5 antibody) at dilution of 1:1000 incubated at room temperature for 1.5 hours.



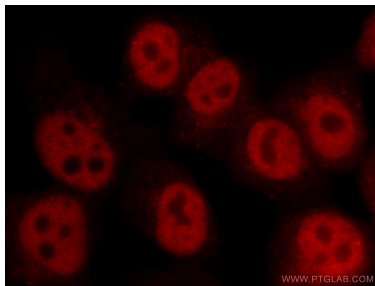
Immunohistochemical analysis of paraffin-embedded human placenta tissue slide using 60088-1-Ig (IRF5 antibody) at dilution of 1:200 (under 10x lens. Heat mediated antigen retrieval with Tris-EDTA buffer (pH 9.0).



Immunohistochemical analysis of paraffin-embedded human placenta tissue slide using 60088-1-Ig (IRF5 antibody) at dilution of 1:200 (under 40x lens. Heat mediated antigen retrieval with Tris-EDTA buffer (pH 9.0).



IP result of anti-IRF5 (IP:60088-1-Ig, 4ug; Detection:60088-1-Ig 1:500) with HeLa cells lysate 1600ug.



Immunofluorescent analysis of HepG2 cells using 60088-1-Ig (IRF5 antibody) at dilution of 1:50 and Rhodamine-Goat anti-Mouse IgG.