

GDI2 Monoclonal antibody, PBS Only

Catalog Number: 60078-1-PBS

Basic Information

Catalog Number:

60078-1-PBS

Size:

1 mg/ml

Source:

Mouse

Isotype:

IgG1

Immunogen Catalog Number:

AG4613

GenBank Accession Number:

BC005145

GeneID (NCBI):

2665

UNIPROT ID:

P50395

Full Name:

GDP dissociation inhibitor 2

Calculated MW:

47 kDa

Observed MW:

46 kDa

Purification Method:

Protein A purification

CloneNo.:

4B8F3

Applications

Tested Applications:

WB, IHC, IF, ELISA

Species Specificity:

human, mouse

Background Information

GDP dissociation inhibitors (GDIs) are proteins that regulate the GDP-GTP exchange reaction of members of the rab family, GDIs can bind and release GDP-bound Rab proteins from membranes. Two GDI proteins towards different Rab proteins have been identified. GDI1 interacts with almost all of the Rab proteins, while GDI2 interacts with Rab11 but not Rab3A. GDI2 distributes ubiquitously, displaying a membrane bound location in perinuclear regions of cells. GDI-2 was thought to be involved in cellular response to insulin. It electrophoreses as a 46kd protein in SDS-PAGE. (PMID: 7929030; PMID: 19570034). This antibody can bind both GDIs for the close sequences.

Storage

Storage:

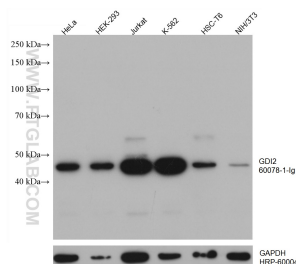
Store at -80°C.

The product is shipped with ice packs. Upon receipt, store it immediately at -80°C

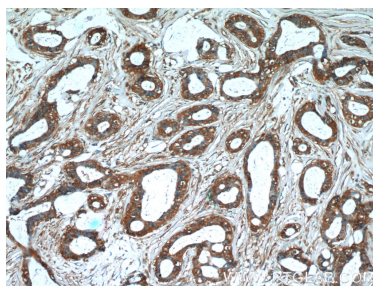
Storage Buffer:

PBS only

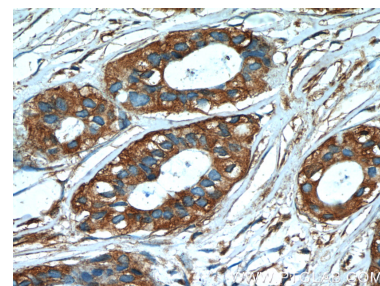
Selected Validation Data



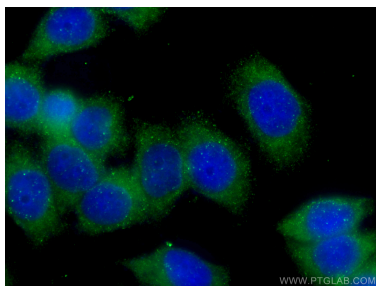
Various lysates were subjected to SDS PAGE followed by western blot with 60078-1-Ig (GDI2 antibody) at dilution of 1:5000 incubated at room temperature for 1.5 hours. The membrane was stripped and reblotted with HRP-conjugated GAPDH Monoclonal antibody (HRP-60004) as loading control. This data was developed using the same antibody clone with 60078-1-PBS in a different storage buffer formulation.



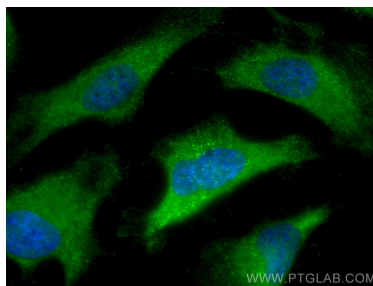
Immunohistochemical analysis of paraffin-embedded human breast cancer tissue slide using 60078-1-Ig (GDI2 Antibody) at dilution of 1:50 (under 10x lens). This data was developed using the same antibody clone with 60078-1-PBS in a different storage buffer formulation.



Immunohistochemical analysis of paraffin-embedded human breast cancer tissue slide using 60078-1-Ig (GDI2 Antibody) at dilution of 1:50 (under 40x lens). This data was developed using the same antibody clone with 60078-1-PBS in a different storage buffer formulation.



Immunofluorescent analysis of (-20°C Ethanol) fixed HeLa cells using 60078-1-Ig (GDI2 antibody) at dilution of 1:100 and CoraLite488-Conjugated AffiniPure Goat Anti-Mouse IgG(H+L). This data was developed using the same antibody clone with 60078-1-PBS in a different storage buffer formulation.



Immunofluorescent analysis of (-20°C Methanol) fixed HeLa cells using GDI2 antibody (60078-1-Ig, Clone: 4B8F3) at dilution of 1:800 and CoraLite488-Conjugated AffiniPure Goat Anti-Mouse IgG(H+L). This data was developed using the same antibody clone with 60078-1-PBS in a different storage buffer formulation.