

For Research Use Only

# RRM1 Monoclonal antibody, PBS Only



Catalog Number: 60073-2-PBS

Featured Product

## Basic Information

Catalog Number:

60073-2-PBS

Size:

1 mg/ml

Source:

Mouse

Isotype:

IgG2b

Immunogen Catalog Number:

AG0789

GenBank Accession Number:

BC006498

GeneID (NCBI):

6240

UNIPROT ID:

P23921

Full Name:

ribonucleotide reductase M1

Calculated MW:

90 kDa

Observed MW:

90 kDa

Purification Method:

Protein A purification

CloneNo.:

5H6F3

## Applications

Tested Applications:

WB,IP,Indirect ELISA,IHC,IF

Species Specificity:

human

## Background Information

Ribonucleoside-diphosphate reductase functions as a heterodimer of a large and a small subunits in deoxyribonucleotide synthesis. RRM1 constitutes to the large subunit (R1) of ribonucleotide reductase, and it can either form heterodimer with small subunit RRM or RRM2B(PMID:16376858). RRM1 provides the precursors necessary for DNA synthesis. RRM1 can not be detected in quiescent cells, while its mRNA and protein are present throughout the cell cycle in cycling cells(PMID:8188248). Researches showed that RRM1 is involved in carcinogenesis, tumor progression, and the resistance of non-small-cell lung cancer (NSCLC) to treatment. Low level expression of RRM1 in NSCLC is associated with poor survival(PMID:17314339).

## Storage

Storage:

Store at -80°C.

Storage Buffer:

PBS Only

For technical support and original validation data for this product please contact:

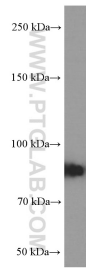
T: 4006900926

E: [Proteintech-CN@ptglab.com](mailto:Proteintech-CN@ptglab.com)

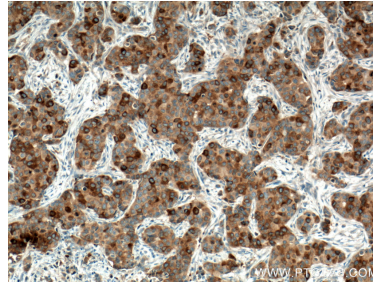
W: [ptgcn.com](http://ptgcn.com)

This product is exclusively available under Proteintech Group brand and is not available to purchase from any other manufacturer.

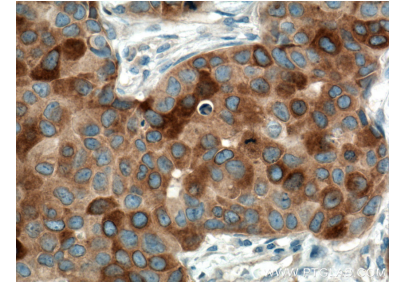
## Selected Validation Data



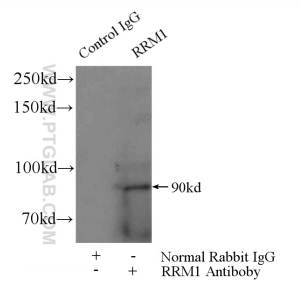
K-562 cells were subjected to SDS PAGE followed by western blot with 60073-2-Ig (RRM1 Antibody) at dilution of 1:2000 incubated at room temperature for 1.5 hours. This data was developed using the same antibody clone with 60073-2-PBS in a different storage buffer formulation.



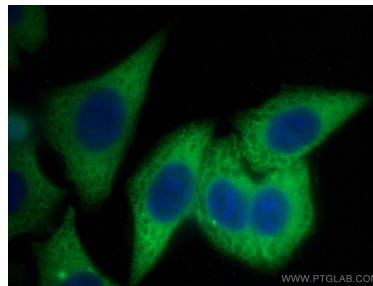
Immunohistochemical analysis of paraffin-embedded human breast cancer tissue slide using 60073-2-Ig (RRM1 antibody) at dilution of 1:5000 (under 10x lens. Heat mediated antigen retrieval with Tris-EDTA buffer (pH 9.0)). This data was developed using the same antibody clone with 60073-2-PBS in a different storage buffer formulation.



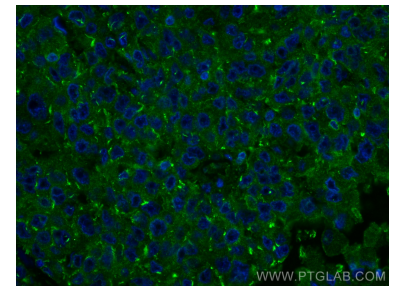
Immunohistochemical analysis of paraffin-embedded human breast cancer tissue slide using 60073-2-Ig (RRM1 antibody) at dilution of 1:5000 (under 40x lens. Heat mediated antigen retrieval with Tris-EDTA buffer (pH 9.0)). This data was developed using the same antibody clone with 60073-2-PBS in a different storage buffer formulation.



IP result of anti-RRM1 (IP:60073-2-Ig, 5ug; Detection:60073-2-Ig 1:1000) with K-562 cells lysate 3440ug. This data was developed using the same antibody clone with 60073-2-PBS in a different storage buffer formulation.



Immunofluorescent analysis of (-20°C Methanol) fixed HepG2 cells using RRM1 antibody (60073-2-Ig, Clone: 5H6F3 ) at dilution of 1:800 and CoraLite®488-Conjugated AffiniPure Goat Anti-Mouse IgG(H+L). This data was developed using the same antibody clone with 60073-2-PBS in a different storage buffer formulation.



Immunofluorescent analysis of (4% PFA) fixed human breast cancer tissue using RRM1 antibody (60073-2-Ig, Clone: 5H6F3 ) at dilution of 1:400 and CoraLite®488-Conjugated AffiniPure Goat Anti-Mouse IgG(H+L). This data was developed using the same antibody clone with 60073-2-PBS in a different storage buffer formulation.