

RRM1 Monoclonal antibody

Catalog Number: 60073-1-Ig **3 Publications**

Basic Information

Catalog Number:

60073-1-Ig

Size:

1500 µg/ml

Source:

Mouse

Isotype:

IgG1

Immunogen Catalog Number:

AG0789

GenBank Accession Number:

BC006498

GeneID (NCBI):

6240

UNIPROT ID:

P23921

Full Name:

ribonucleotide reductase M1

Calculated MW:

90 kDa

Observed MW:

90 kDa

Purification Method:

Protein G purification

CloneNo.:

4C12E10

Recommended Dilutions:

WB 1:500-1:1000

IP 0.5-4.0 µg for 1.0-3.0 mg of total protein lysate

IHC 1:3000-1:8000

Applications

Tested Applications:

FC, IHC, IP, WB, ELISA

Cited Applications:

WB, IF, IHC

Species Specificity:

human, mouse

Cited Species:

human

Note-IHC: suggested antigen retrieval with TE buffer pH 9.0; (*) Alternatively, antigen retrieval may be performed with citrate buffer pH 6.0

Positive Controls:

WB : K-562 cells,

IP : K-562 cells,

IHC : human breast cancer tissue, human lung cancer tissue, human urothelial carcinoma tissue, human colon cancer tissue, human ovary tumor tissue, human cervical cancer tissue

Background Information

Ribonucleoside-diphosphate reductase functions as a heterodimer of a large and a small subunits in deoxyribonucleotide synthesis. RRM1 constitutes to the large subunit (R1) of ribonucleotide reductase, and it can either form heterodimer with small subunit RRM or RRM2B. RRM1 provides the precursors necessary for DNA synthesis. RRM1 can not be detected in quiescent cells, while its mRNA and protein are present throughout the cell cycle in cycling cells (PMID:8188248). Researches showed that RRM1 is involved in carcinogenesis, tumor progression, and the resistance of non-small-cell lung cancer (NSCLC) to treatment. Low level expression of RRM1 in NSCLC is associated with poor survival (PMID:17314339).

Notable Publications

Author	Pubmed ID	Journal	Application
Marcus J C Long	31836351	Cell Chem Biol	WB, IF
Lv Chao C	23621919	World J Surg Oncol	IHC
Lifei Fan	28467790	Oncotarget	WB

Storage

Storage:

Store at -20°C. Stable for one year after shipment.

Storage Buffer:

PBS with 0.02% sodium azide and 50% glycerol pH 7.3.

Aliquoting is unnecessary for -20°C storage

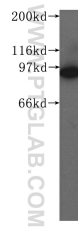
For technical support and original validation data for this product please contact:

T: 4006900926

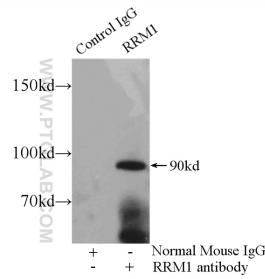
E: Proteintech-CN@ptglab.comW: ptgcn.com

This product is exclusively available under Proteintech Group brand and is not available to purchase from any other manufacturer.

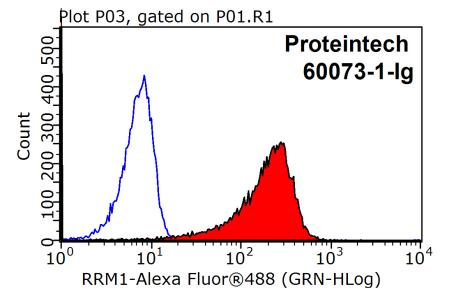
Selected Validation Data



K-562 cells were subjected to SDS PAGE followed by western blot with 60073-1-Ig (RRM1 antibody) at dilution of 1:500 incubated at room temperature for 1.5 hours.



IP result of anti-RRM1 (IP:60073-1-Ig, 5ug; Detection:60073-1-Ig 1:1000) with K-562 cells lysate 3200ug.



1X10⁶ HepG2 cells were stained with .2ug RRM1 antibody (60073-1-Ig, red) and control antibody (blue). Fixed with 90% MeOH blocked with 3% BSA (30 min). Alexa Fluor 488-conjugated AffiniPure Goat Anti-Mouse IgG(H+L) with dilution 1:1000.