

For Research Use Only

# Syntaxin 6 Monoclonal antibody

Catalog Number: 60059-1-Ig **2 Publications**



## Basic Information

<b>Catalog Number:</b> 60059-1-Ig	<b>GenBank Accession Number:</b> BC009944	<b>Purification Method:</b> Protein A purification
<b>Size:</b> 1300 ug/ml	<b>GeneID (NCBI):</b> 10228	<b>CloneNo.:</b> 2B6G4
<b>Source:</b> Mouse	<b>UNIPROT ID:</b> O43752	<b>Recommended Dilutions:</b> WB 1:2000-1:16000 IHC 1:50-1:500 IF/ICC 1:200-1:800
<b>Isotype:</b> IgG1	<b>Full Name:</b> syntaxin 6	
<b>Immunogen Catalog Number:</b> AG1284	<b>Calculated MW:</b> 29 kDa	
	<b>Observed MW:</b> 29 kDa	

## Applications

<b>Tested Applications:</b> WB, IHC, IF/ICC, ELISA	<b>Positive Controls:</b>
<b>Cited Applications:</b> WB	<b>WB:</b> C6 cells, SH-SY5Y cells, U-251 cells, Jurkat cells, Neuro-2a cells, human brain tissue, rat brain tissue, mouse brain tissue
<b>Species Specificity:</b> human, mouse, rat	<b>IHC:</b> human brain tissue, human prostate cancer tissue
<b>Cited Species:</b> human	<b>IF/ICC:</b> PC-12 cells,

**Note-IHC:** suggested antigen retrieval with **TE buffer pH 9.0**; (\*) Alternatively, antigen retrieval may be performed with **citrate buffer pH 6.0**

## Background Information

Syntaxin-6 (STX6) is a SNARE protein located in the trans-Golgi network (TGN) and endosomes. It associates with a variety of SNARE proteins and is involved in intracellular vesicle trafficking. STX6 is required for sorting proteins from endosomes toward either the TGN or lysosomes.

## Notable Publications

Author	Pubmed ID	Journal	Application
Shouheng Jin	36057605	Nat Commun	WB
Ryosei Motoo	39621656	PLoS One	WB

## Storage

**Storage:**  
Store at -20°C. Stable for one year after shipment.  
**Storage Buffer:**  
PBS with 0.02% sodium azide and 50% glycerol pH 7.3.  
Aliquoting is unnecessary for -20°C storage

For technical support and original validation data for this product please contact:

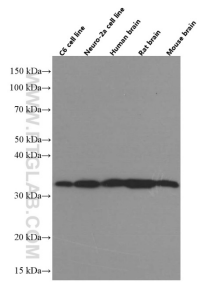
T: 4006900926

E: [Proteintech-CN@ptglab.com](mailto:Proteintech-CN@ptglab.com)

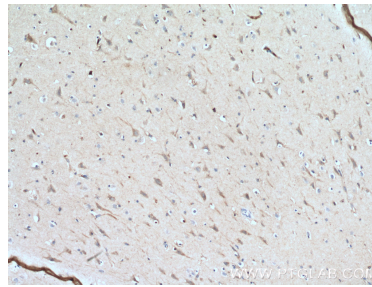
W: [ptgcn.com](http://ptgcn.com)

This product is exclusively available under Proteintech Group brand and is not available to purchase from any other manufacturer.

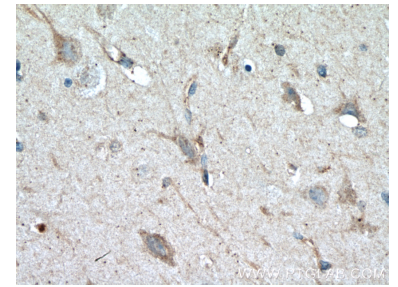
## Selected Validation Data



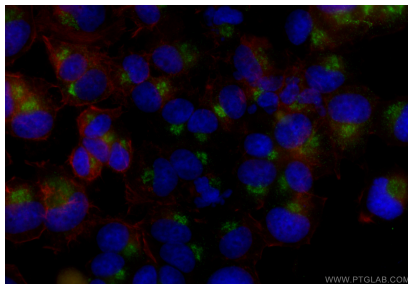
Various lysates were subjected to SDS PAGE followed by western blot with 60059-1-Ig (Syntaxin 6 antibody at dilution of 1:8000 incubated at room temperature for 1.5 hours.



Immunohistochemical analysis of paraffin-embedded human brain tissue slide using 60059-1-Ig (Syntaxin 6 antibody at dilution of 1:200 (under 10x lens). Heat mediated antigen retrieval with Tris-EDTA buffer (pH 9.0).



Immunohistochemical analysis of paraffin-embedded human brain tissue slide using 60059-1-Ig (Syntaxin 6 antibody at dilution of 1:200 (under 40x lens). Heat mediated antigen retrieval with Tris-EDTA buffer (pH 9.0).



Immunofluorescent analysis of (4% PFA) fixed PC-12 cells using Syntaxin 6 antibody (60059-1-Ig, Clone: 2B6G4 ) at dilution of 1:400 and CoraLite®488-Conjugated Goat Anti-Mouse IgG(H+L) (SA00013-1), CL594-Phalloidin (red).