

For Research Use Only

PLOD3 Monoclonal antibody

Catalog Number: 60058-1-Ig

Featured Product

3 Publications



Basic Information

Catalog Number:

60058-1-Ig

Size:

1000 ug/ml

Source:

Mouse

Isotype:

IgG2a

Immunogen Catalog Number:

AG1480

GenBank Accession Number:

BC011674

GeneID (NCBI):

8985

UNIPROT ID:

O60568

Full Name:

procollagen-lysine, 2-oxoglutarate 5-dioxygenase 3

Calculated MW:

738 aa, 85 kDa

Observed MW:

80-85 kDa

Purification Method:

Protein A purification

CloneNo.:

2G12B8

Recommended Dilutions:

WB 1:5000-1:50000

IP 0.5-4.0 ug for 1.0-3.0 mg of total

protein lysate

IHC 1:20-1:200

IF/ICC 1:200-1:800

Applications

Tested Applications:

WB, IHC, IF/ICC, IP, ELISA

Cited Applications:

WB

Species Specificity:

human, mouse, rat

Cited Species:

human, mouse

Note-IHC: suggested antigen retrieval with TE buffer pH 9.0; (*) Alternatively, antigen retrieval may be performed with citrate buffer pH 6.0

Positive Controls:

WB : A549 cells, HepG2 cells, human placenta tissue, PC-3 cells, K-562 cells, LNCaP cells, HeLa cells, HSC-T6 cells, NIH/3T3 cells, 4T1 cells

IP : HeLa cells,

IHC : human pancreas cancer tissue,

IF/ICC : HeLa cells,

Background Information

PLOD3, also named as LH3, forms hydroxylysine residues in -Xaa-Lys-Gly- sequences in collagens. These hydroxylysines serve as sites of attachment for carbohydrate units and are essential for the stability of the intermolecular collagen cross-links. The major function of PLOD3 in osteoblasts is to glucosylate galactosylhydroxylysine residues in type I collagen.

Notable Publications

Author	Pubmed ID	Journal	Application
Neus Bota-Rabassedas	33543040	Matrix Biol Plus	WB
Stephen A Watt	26380979	PLoS One	WB
Xiaochao Tan	34874914	JCI Insight	WB

Storage

Storage:

Store at -20°C. Stable for one year after shipment.

Storage Buffer:

PBS with 0.1% sodium azide and 50% glycerol pH 7.3.

Aliquoting is unnecessary for -20°C storage

For technical support and original validation data for this product please contact:

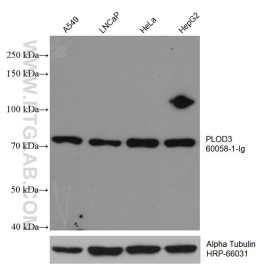
T: 4006900926

E: Proteintech-CN@ptglab.com

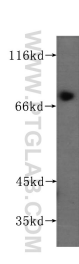
W: ptgcn.com

This product is exclusively available under Proteintech Group brand and is not available to purchase from any other manufacturer.

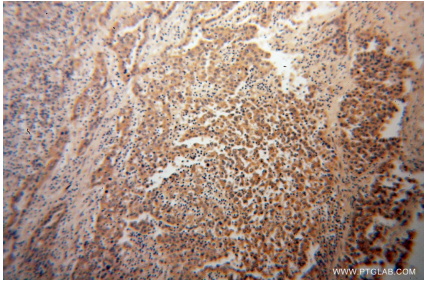
Selected Validation Data



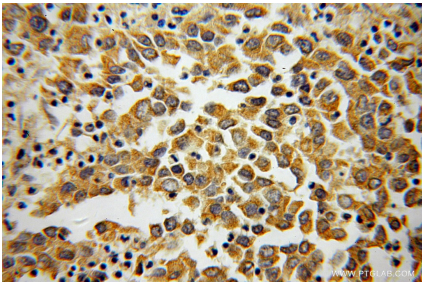
Various lysates were subjected to SDS PAGE followed by western blot with 60058-1-Ig (PLOD3 antibody) at dilution of 1:10000 incubated at room temperature for 1.5 hours. The membrane was stripped and reblotted with HRP-conjugated Alpha Tubulin Monoclonal antibody (HRP-66031) as loading control.



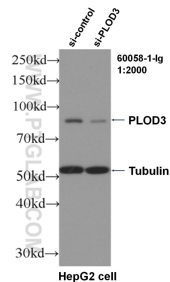
human placenta tissue were subjected to SDS PAGE followed by western blot with 60058-1-Ig (PLOD3 antibody) at dilution of 1:300 incubated at room temperature for 1.5 hours.



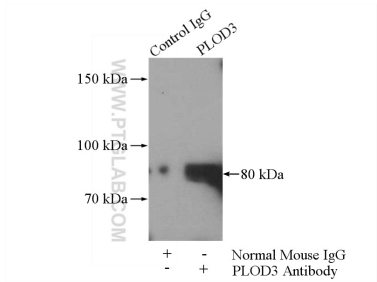
Immunohistochemical analysis of paraffin-embedded human pancreas cancer using 60058-1-Ig(PLOD3 antibody) at dilution of 1:100 (under 10x lens).



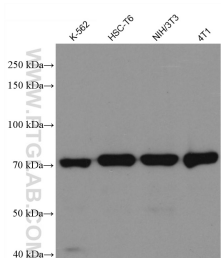
Immunohistochemical analysis of paraffin-embedded human pancreas cancer using 60058-1-Ig(PLOD3 antibody) at dilution of 1:100 (under 40x lens).



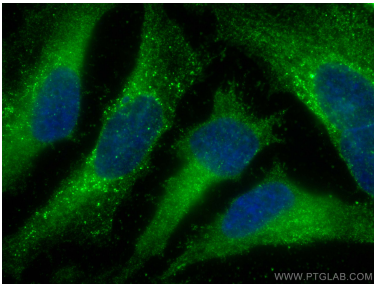
WB result of PLOD3 antibody (60058-1-Ig, 1:2000) with si-Control and si-PLOD3 transfected HepG2 cells.



IP result of anti-PLOD3 (IP:60058-1-Ig, 5ug; Detection:60058-1-Ig 1:500) with HeLa cells lysate 1400ug.



Various lysates were subjected to SDS PAGE followed by western blot with 60058-1-Ig (PLOD3 antibody) at dilution of 1:10000 incubated at room temperature for 1.5 hours.



Immunofluorescent analysis of (-20°C Methanol) fixed HeLa cells using PLOD3 antibody (60058-1-Ig, Clone: 2G12B8) at dilution of 1:400 and CoraLite®488-Conjugated AffiniPure Goat Anti-Mouse IgG(H+L).