

For Research Use Only

Rab23 Monoclonal antibody

Catalog Number: 60056-1-Ig

Featured Product

1 Publications



Basic Information

Catalog Number:

60056-1-Ig

Size:

750 µg/ml

Source:

Mouse

Isotype:

IgG1

Immunogen Catalog Number:

AG1588

GenBank Accession Number:

BC015021

GeneID (NCBI):

51715

UNIPROT ID:

Q9ULC3

Full Name:

RAB23, member RAS oncogene family

Calculated MW:

237 aa, 27 kDa

Observed MW:

27-30 kDa

Purification Method:

Protein A purification

CloneNo.:

3E12B6

Recommended Dilutions:

WB 1:500-1:2000

Applications

Tested Applications:

WB, ELISA

Cited Applications:

WB

Species Specificity:

human, mouse

Cited Species:

human, mouse

Positive Controls:

WB : human brain tissue, HeLa cells

Background Information

Rab23 is a novel member of large Rab small GTPase family. It plays important roles during embryonic development. The brain-enriched Rab23 is the only Rab protein that is known to have a distinct function during central nervous system development, playing an essential role as a negative regulator of the Sonic Hedgehog (Shh) pathway. RAB23 has recently been identified in mesangial cells (MCs), and could serve as a biomarker that indicates the severity of FSGS (focal segmental glomerulosclerosis). Mutations in RAB23 may result in ACP52 (acrocephalopolysyndactyly type 2).

Notable Publications

Author	Pubmed ID	Journal	Application
Andreas Gerondopoulos	31564489	Curr Biol	WB

Storage

Storage:

Store at -20°C. Stable for one year after shipment.

Storage Buffer:

PBS with 0.02% sodium azide and 50% glycerol pH 7.3.

Aliquoting is unnecessary for -20°C storage

For technical support and original validation data for this product please contact:

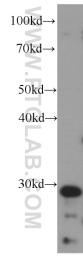
T: 4006900926

E: Proteintech-CN@ptglab.com

W: ptgcn.com

This product is exclusively available under Proteintech Group brand and is not available to purchase from any other manufacturer.

Selected Validation Data



human brain tissue were subjected to SDS PAGE followed by western blot with 60056-1-Ig (RAB23 antibody) at dilution of 1:1000 incubated at room temperature for 1.5 hours.