

For Research Use Only

MGP Monoclonal antibody

Catalog Number: 60055-1-Ig **2 Publications**



Basic Information

Catalog Number: 60055-1-Ig	GenBank Accession Number: BC005272	Purification Method: Protein A purification
Size: 2000 µg/ml	GeneID (NCBI): 4256	CloneNo.: 1A1C3
Source: Mouse	UNIPROT ID: P08493	Recommended Dilutions: WB 1:2000-1:10000 IHC 1:400-1:1600 IF 1:200-1:800
Isotype: IgG2a	Full Name: matrix Gla protein	
Immunogen Catalog Number: AG1091	Calculated MW: 103 aa, 13 kDa	
	Observed MW: 12 kDa	

Applications

Tested Applications:
IF/ICC, IF-P, IHC, WB, ELISA

Cited Applications:
WB

Species Specificity:
human, mouse

Cited Species:
human

Note-IHC: suggested antigen retrieval with TE buffer pH 9.0; (*) Alternatively, antigen retrieval may be performed with citrate buffer pH 6.0

Positive Controls:

WB: human placenta tissue, human kidney tissue, human brain tissue, human saliva, human liver cancer tissue

IHC: human gliomas tissue, human brain tissue, human lung tissue, human heart tissue, human kidney tissue

IF: MDA-MB-231 cells, mouse kidney tissue

Background Information

Matrix Gla protein (MGP) is a vitamin K-dependent, extracellular matrix protein. MGP plays a pivotal role in preventing soft tissue calcification and local mineralization of the vascular wall. Vitamin K deficiency leads to inactive uncarboxylated MGP (ucMGP), which accumulates at sites of arterial calcification. However MGP is synthesized in many tissues and is especially enriched in embryonic tissues and in cancer cells. Defects in MGP are the cause of Keutel syndrome (KS), which is an autosomal recessive disorder characterized by abnormal cartilage calcification, peripheral pulmonary stenosis neural hearing loss and midfacial hypoplasia.

Notable Publications

Author	Pubmed ID	Journal	Application
Zhenjun Xu	34795497	J Inflamm Res	WB
Wei-quan Yuan	37187293	J Biol Chem	WB

Storage

Storage:

Store at -20°C. Stable for one year after shipment.

Storage Buffer:

PBS with 0.1% sodium azide and 50% glycerol pH 7.3.

Aliquoting is unnecessary for -20°C storage

For technical support and original validation data for this product please contact:

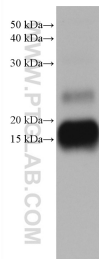
T: 4006900926

E: Proteintech-CN@ptglab.com

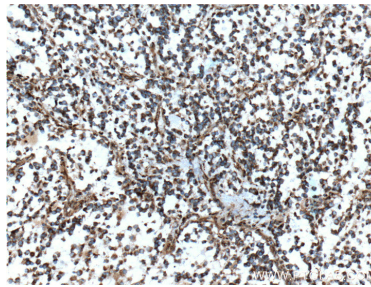
W: ptgcn.com

This product is exclusively available under Proteintech Group brand and is not available to purchase from any other manufacturer.

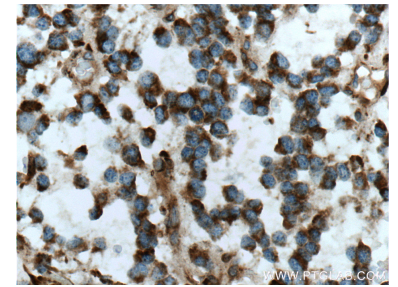
Selected Validation Data



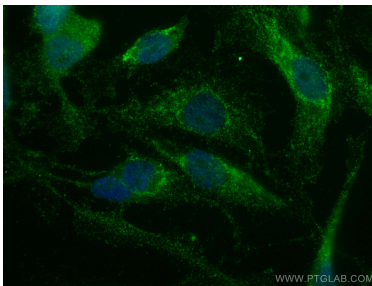
human placenta tissue were subjected to SDS PAGE followed by western blot with 60055-1-Ig (MGP antibody) at dilution of 1:5000 incubated at room temperature for 1.5 hours.



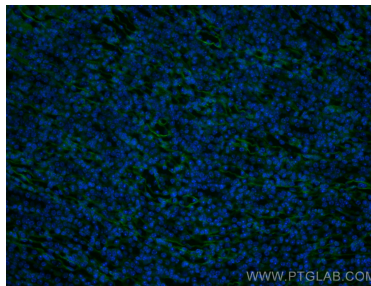
Immunohistochemical analysis of paraffin-embedded human gliomas tissue slide using 60055-1-Ig (MGP Antibody) at dilution of 1:800 (under 10x lens).



Immunohistochemical analysis of paraffin-embedded human gliomas tissue slide using 60055-1-Ig (MGP Antibody) at dilution of 1:800 (under 40x lens).



Immunofluorescent analysis of (4% PFA) fixed MDA-MB-231 cells using MGP antibody (60055-1-Ig, Clone: 1A1C3) at dilution of 1:400 and CoraLite@488-Conjugated AffiniPure Goat Anti-Mouse IgG(H+L).



Immunofluorescent analysis of (4% PFA) fixed mouse kidney tissue using MGP antibody (60055-1-Ig, Clone: 1A1C3) at dilution of 1:400 and CoraLite@488-Conjugated AffiniPure Goat Anti-Mouse IgG(H+L).