

For Research Use Only

# Annexin A2 Monoclonal antibody, PBS Only

Catalog Number: 60051-1-PBS

Featured Product



## Basic Information

Catalog Number:

60051-1-PBS

Size:

1mg/ml

Source:

Mouse

Isotype:

IgG2b

Immunogen Catalog Number:

AG1777

GenBank Accession Number:

BC016774

GeneID (NCBI):

302

ENSEMBL Gene ID:

ENSG00000182718

UNIPROT ID:

P07355

Full Name:

annexin A2

Calculated MW:

339 aa, 39 kDa

Observed MW:

35-38 kDa

Purification Method:

Protein A purification

CloneNo.:

3H1B11

## Applications

Tested Applications:

WB, IHC, IF/ICC, IP, Indirect ELISA

Species Specificity:

human, mouse, rat

## Background Information

Annexin A2 (ANXA2), also named Annexin-2 or Lipocortin II, is a  $Ca^{2+}$  binding protein that is up-regulated in virally transformed cell lines and human tumors. This calcium-regulated membrane-binding protein, whose affinity for calcium is greatly enhanced by anionic phospholipids, may cross-link plasma membrane phospholipids with actin and the cytoskeleton and be involved with exocytosis. Heat-stress response may also involve Annexin-2.

## Storage

Storage:

Store at  $-80^{\circ}C$ .

**The product is shipped with ice packs. Upon receipt, store it immediately at  $-80^{\circ}C$**

Storage Buffer:

PBS Only

For technical support and original validation data for this product please contact:

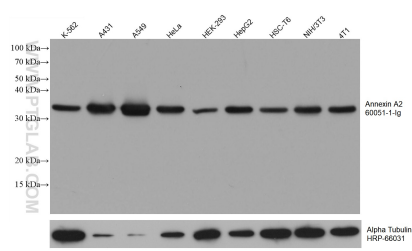
T: 4006900926

E: [Proteintech-CN@ptglab.com](mailto:Proteintech-CN@ptglab.com)

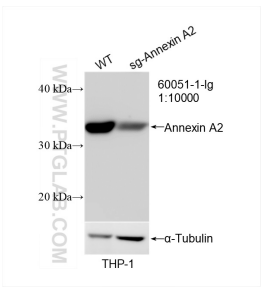
W: [ptgcn.com](http://ptgcn.com)

**This product is exclusively available under Proteintech Group brand and is not available to purchase from any other manufacturer.**

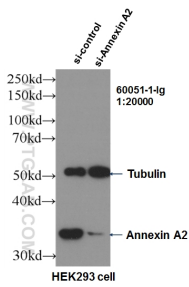
Selected Validation Data



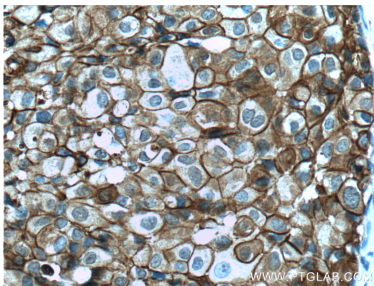
Various lysates were subjected to SDS PAGE followed by western blot with 60051-1-Ig (Annexin A2 antibody) at dilution of 1:20000 incubated at room temperature for 1.5 hours. The membrane was stripped and reblotted with HRP-conjugated Alpha Tubulin Monoclonal antibody (HRP-66031) as loading control. This data was developed using the same antibody clone with 60051-1-PBS in a different storage buffer formulation.



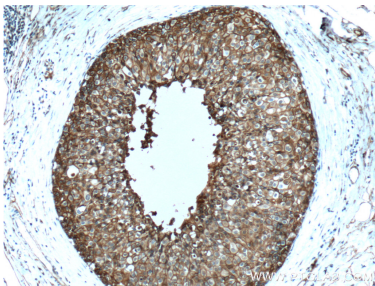
WB result of Annexin A2 antibody (60051-1-Ig; 1:10000; room temperature for 1.5 hours) with wild-type and sg-Annexin A2 transfected THP-1 cells. This data was developed using the same antibody clone with 60051-1-PBS in a different storage buffer formulation.



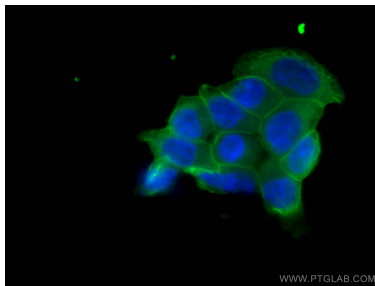
WB result of Annexin A2 antibody (60051-1-Ig, 1:20,000) with si-Control and si-Annexin A2 transfected HEK293 cells. This data was developed using the same antibody clone with 60051-1-PBS in a different storage buffer formulation.



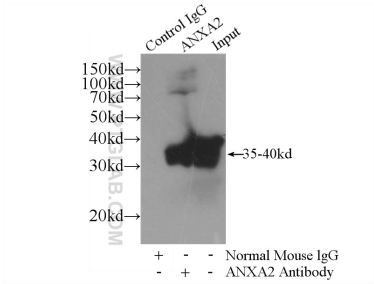
Immunohistochemical analysis of paraffin-embedded human breast cancer tissue slide using 60051-1-Ig (Annexin A2 Antibody) at dilution of 1:200 (under 40x lens). Heat mediated antigen retrieval with Tris-EDTA buffer (pH 9.0). This data was developed using the same antibody clone with 60051-1-PBS in a different storage buffer formulation.



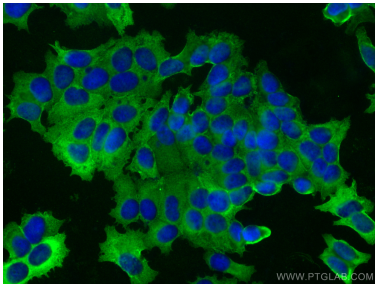
Immunohistochemical analysis of paraffin-embedded human breast cancer tissue slide using 60051-1-Ig (Annexin A2 Antibody) at dilution of 1:200 (under 10x lens). Heat mediated antigen retrieval with Tris-EDTA buffer (pH 9.0). This data was developed using the same antibody clone with 60051-1-PBS in a different storage buffer formulation.



Immunofluorescent analysis of (-20°C Ethanol) fixed T-47D cells using 60051-1-Ig (Annexin A2 antibody), at dilution of 1:500 and CoraLite® 488-Conjugated AffiniPure Goat Anti-Mouse IgG(H+L). This data was developed using the same antibody clone with 60051-1-PBS in a different storage buffer formulation.



IP result of anti-Annexin A2 (IP:60051-1-Ig, 4ug; Detection:60051-1-Ig 1:1500) with HeLa cells lysate 2400ug. This data was developed using the same antibody clone with 60051-1-PBS in a different storage buffer formulation.



Immunofluorescent analysis of (-20°C Methanol) fixed MCF-7 cells using Annexin A2 antibody (60051-1-Ig, Clone: 3H1B11) at dilution of 1:800 and CoraLite® 488-Conjugated AffiniPure Goat Anti-Mouse IgG(H+L) (SA00013-1). This data was developed using the same antibody clone with 60051-1-PBS in a different storage buffer formulation.