

For Research Use Only

# SLAM/CD150 Monoclonal antibody, PBS Only

Catalog Number: 60043-1-PBS



## Basic Information

Catalog Number:

60043-1-PBS

Concentration:

1mg/ml

Source:

mouse

Isotype:

IgM

Immunogen Catalog Number:

AG1386

GenBank Accession Number:

BC012602

GeneID (NCBI):

6504

UNIPROT ID:

Q13291

Full Name:

signaling lymphocytic activation  
molecule family member 1

Calculated MW:

37 kDa

Observed MW:

80 kDa

Purification Method:

Thiophilic affinity chromatograph

CloneNo.:

5B4G1

## Applications

Tested Applications:

WB, ELISA

Species Specificity:

human

## Background Information

Signaling lymphocytic activation molecule (SLAM, also known as SLAMF1 or CD150) is a 70-95 kDa transmembrane glycoprotein that belongs to the immunoglobulin gene superfamily. SLAM is constitutively expressed on peripheral blood memory T-cells, T-cell clones, immature thymocytes and a proportion of B-cells, and is rapidly induced on naive T-cells after activation. SLAM is involved in T cell stimulation and cytokine production, and may play an important role in the regulation of immune responses to pathogens.

## Storage

Storage:

Store at -80°C.

The product is shipped with ice packs. Upon receipt, store it immediately at -80°C

Storage Buffer:

PBS Only

For technical support and original validation data for this product please contact:

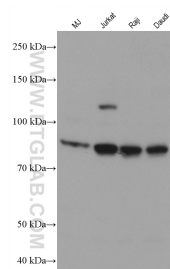
T: 4006900926

E: [Proteintech-CN@ptglab.com](mailto:Proteintech-CN@ptglab.com)

W: [ptgcn.com](http://ptgcn.com)

This product is exclusively available under Proteintech Group brand and is not available to purchase from any other manufacturer.

## Selected Validation Data



Various lysates were subjected to SDS PAGE followed by western blot with 60043-1-Ig (SLAM/CD150 antibody) at dilution of 1:2000 incubated at room temperature for 1.5 hours. This data was developed using the same antibody clone with 60043-1-PBS in a different storage buffer formulation.