

For Research Use Only

UBE3A Monoclonal antibody, PBS Only (Capture)

Catalog Number: 60038-1-PBS



Basic Information

Catalog Number: 60038-1-PBS	GenBank Accession Number: BC002582	Purification Method: Protein G purification
Concentration: 1mg/ml	GeneID (NCBI): 7337	CloneNo.: 3D6H9
Source: Mouse	UNIPROT ID: Q05086	
Isotype: IgG1	Full Name: ubiquitin protein ligase E3A	
Immunogen Catalog Number: AG0346	Calculated MW: 852 aa, 98 kDa	
	Observed MW: 100 kDa	

Applications

Tested Applications:
WB, IHC, Cytometric bead array, Indirect ELISA, Sample test

Species Specificity:
human, mouse

Background Information

UBE3A (Ubiquitin-protein ligase E3A) is also named as E6AP, EPVE6AP, HPVE6A and belongs to the E3 ubiquitin protein ligase family. It functions as both an E3 ligase in the ubiquitin proteasome pathway and as a transcriptional coactivator. It is also initially identified as a cellular protein that mediates in vitro association of the human papillomavirus E6 protein with p53, leading to the ubiquitin-dependent degradation of p53 (PMID:1661671). Defects in UBE3A are a cause of Angelman syndrome (AS) (PMID:10508479). It has 3 isoforms produced by alternative splicing.

Storage

Storage:
Store at -80°C.
The product is shipped with ice packs. Upon receipt, store it immediately at -80°C

Storage Buffer:
PBS only, pH7.3

For technical support and original validation data for this product please contact:

T: 4006900926

E: Proteintech-CN@ptglab.com

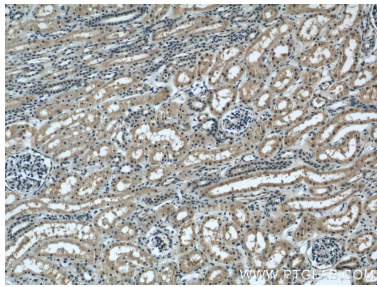
W: ptgcn.com

This product is exclusively available under Proteintech Group brand and is not available to purchase from any other manufacturer.

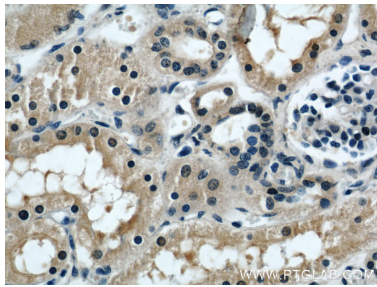
Selected Validation Data



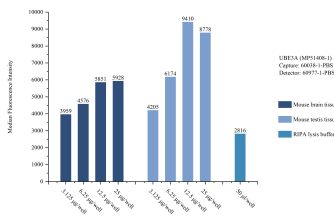
HeLa cells were subjected to SDS PAGE followed by western blot with 60038-1-Ig (UBE3A antibody) at dilution of 1:300 incubated at room temperature for 1.5 hours. This data was developed using the same antibody clone with 60038-1-PBS in a different storage buffer formulation.



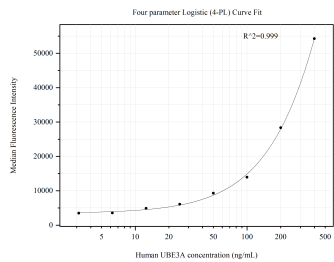
Immunohistochemical analysis of paraffin-embedded human kidney using 60038-1-Ig (UBE3A antibody) at dilution of 1:50 (under 10x lens). This data was developed using the same antibody clone with 60038-1-PBS in a different storage buffer formulation.



Immunohistochemical analysis of paraffin-embedded human kidney using 60038-1-Ig (UBE3A antibody) at dilution of 1:50 (under 40x lens). This data was developed using the same antibody clone with 60038-1-PBS in a different storage buffer formulation.



Sample test of MP51408-1, UBE3A Monoclonal Matched Antibody Pair, PBS Only. Capture antibody: 60038-1-PBS. Detection antibody: 60977-1-PBS.



Cytometric bead array standard curve of MP51408-1, UBE3A Monoclonal Matched Antibody Pair, PBS Only. Capture antibody: 60038-1-PBS. Detection antibody: 60977-1-PBS. Standard:Ag17546. Range: 3.125-400 ng/mL.