

For Research Use Only

UBE3A Monoclonal antibody

Catalog Number: 60038-1-Ig



Basic Information

Catalog Number: 60038-1-Ig	GenBank Accession Number: BC002582	Purification Method: Caprylic acid/ammonium sulfate precipitation
Size: 1000 µg/ml	GeneID (NCBI): 7337	CloneNo.: 3D6H9
Source: Mouse	UNIPROT ID: Q05086	Recommended Dilutions: WB 1:200-1:1000 IHC 1:20-1:400
Isotype: IgG1	Full Name: ubiquitin protein ligase E3A	
Immunogen Catalog Number: AG0346	Calculated MW: 852 aa, 98 kDa	
	Observed MW: 100 kDa	

Applications

Tested Applications:

IHC, WB, ELISA

Species Specificity:

human, mouse

Note-IHC: suggested antigen retrieval with TE buffer pH 9.0; (*) Alternatively, antigen retrieval may be performed with citrate buffer pH 6.0

Positive Controls:

WB : HeLa cells,

IHC : human kidney tissue,

Background Information

UBE3A (Ubiquitin-protein ligase E3A) is also named as E6AP, EPVE6AP, HPVE6A and belongs to the E3 ubiquitin protein ligase family. It functions as both an E3 ligase in the ubiquitin proteasome pathway and as a transcriptional coactivator. It is also initially identified as a cellular protein that mediates in vitro association of the human papillomavirus E6 protein with p53, leading to the ubiquitin-dependent degradation of p53 (PMID:1661671). Defects in UBE3A are a cause of Angelman syndrome (AS) (PMID:10508479). It has 3 isoforms produced by alternative splicing.

Storage

Storage:

Store at -20°C. Stable for one year after shipment.

Storage Buffer:

PBS with 0.1% sodium azide and 50% glycerol pH 7.3.

Aliquoting is unnecessary for -20°C storage

For technical support and original validation data for this product please contact:

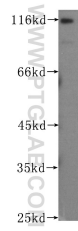
T: 4006900926

E: Proteintech-CN@ptglab.com

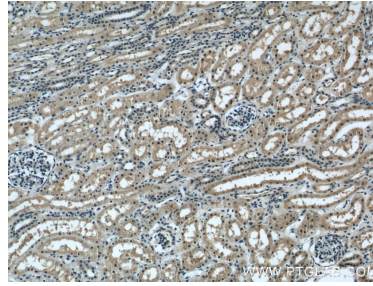
W: ptgcn.com

This product is exclusively available under Proteintech Group brand and is not available to purchase from any other manufacturer.

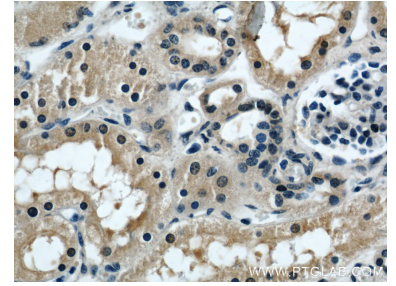
Selected Validation Data



HeLa cells were subjected to SDS PAGE followed by western blot with 60038-1-Ig (UBE3A antibody) at dilution of 1:300 incubated at room temperature for 1.5 hours.



Immunohistochemical analysis of paraffin-embedded human kidney using 60038-1-Ig(UBE3A antibody) at dilution of 1:50 (under 10x lens).



Immunohistochemical analysis of paraffin-embedded human kidney using 60038-1-Ig(UBE3A antibody) at dilution of 1:50 (under 40x lens).