

For Research Use Only

# FKBPL Monoclonal antibody

Catalog Number: 60030-1-Ig



## Basic Information

<b>Catalog Number:</b> 60030-1-Ig	<b>GenBank Accession Number:</b> BC004168	<b>Purification Method:</b> Protein G purification
<b>Size:</b> 1000 µg/ml	<b>GeneID (NCBI):</b> 63943	<b>CloneNo.:</b> 5D9A9
<b>Source:</b> Mouse	<b>UNIPROT ID:</b> Q9UIM3	<b>Recommended Dilutions:</b> WB 1:200-1:1000
<b>Isotype:</b> IgG1	<b>Full Name:</b> FK506 binding protein like	
<b>Immunogen Catalog Number:</b> AG0112	<b>Calculated MW:</b> 349 aa, 38 kDa	
	<b>Observed MW:</b> 42-48 kDa	

## Applications

<b>Tested Applications:</b> WB, ELISA	<b>Positive Controls:</b> WB : mouse ovary tissue,
<b>Species Specificity:</b> human, mouse	

## Background Information

FKBPL, also named as DIR1, NG7 and WISp39, has similarity to the immunophilin protein family, which plays a role in immunoregulation and basic cellular processes involving protein folding and trafficking. This protein is thought to have a potential role in the induced radioresistance, probably by increasing the rate of DNA repair in cells exposed to X rays. Also it appears to have some involvement in general stress response in the control of the cell cycle. It regulates p21 protein stability by binding to Hsp90 and p21. FKBPL is an estrogen-inducible gene that acts as a cochaperone in ER  $\alpha$  /Hsp90 molecular complexes; furthermore, FKBPL levels may be both a prognostic indicator and determinant of response to endocrine therapy. (PMID:20103631, 15664193)

## Storage

**Storage:**  
Store at -20°C. Stable for one year after shipment.  
**Storage Buffer:**  
PBS with 0.1% sodium azide and 50% glycerol pH 7.3.  
Aliquoting is unnecessary for -20°C storage

For technical support and original validation data for this product please contact:

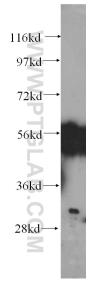
T: 4006900926

E: [Proteintech-CN@ptglab.com](mailto:Proteintech-CN@ptglab.com)

W: [ptgcn.com](http://ptgcn.com)

This product is exclusively available under Proteintech Group brand and is not available to purchase from any other manufacturer.

## Selected Validation Data



mouse ovary tissue were subjected to SDS PAGE followed by western blot with 60030-1-Ig (FKBP1 antibody) at dilution of 1:300 incubated at room temperature for 1.5 hours.