

For Research Use Only

# KMO Monoclonal antibody

Catalog Number: 60029-1-Ig **6 Publications**



## Basic Information

Catalog Number:

60029-1-Ig

Concentration:

620 µg/ml

Source:

Mouse

Isotype:

IgG1

Immunogen Catalog Number:

AG1109

GenBank Accession Number:

BC005297

GeneID (NCBI):

8564

UNIPROT ID:

O15229

Full Name:

kynurenine 3-monooxygenase  
(kynurenine 3-hydroxylase)

Calculated MW:

486 aa, 56 kDa

Observed MW:

56 kDa

Purification Method:

Protein A purification

CloneNo.:

2D2F2

Recommended Dilutions:

WB 1:5000-1:50000

## Applications

Tested Applications:

WB, ELISA

Cited Applications:

WB, IHC, IF

Species Specificity:

human

Cited Species:

human, mouse, rat

Positive Controls:

WB : PC-3 cells, SKOV-3 cells

## Background Information

KMO(Kynurenine 3-monooxygenase) is a membrane protein located on the outer membrane of mitochondria. Tissue distribution studies have revealed that, in rats, highest enzyme activity is found in kidney and liver, with brain having the least activity in comparison to peripheral organs(PMID: 9237672).

## Notable Publications

Author	Pubmed ID	Journal	Application
NANAKA MORITA	34584567	Oncol Lett	IHC
Ron Korstanje	27020856	J Am Soc Nephrol	IF
Edit Bosnyák	26092774	Neuro Oncol	IHC

## Storage

Storage:

Store at -20°C. Stable for one year after shipment.

Storage Buffer:

PBS with 0.02% sodium azide and 50% glycerol pH 7.3.

Aliquoting is unnecessary for -20°C storage

For technical support and original validation data for this product please contact:

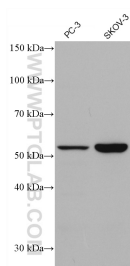
T: 4006900926

E: [Proteintech-CN@ptglab.com](mailto:Proteintech-CN@ptglab.com)

W: [ptgcn.com](http://ptgcn.com)

This product is exclusively available under Proteintech Group brand and is not available to purchase from any other manufacturer.

## Selected Validation Data



Various lysates were subjected to SDS PAGE followed by western blot with 60029-1-Ig (KMO antibody) at dilution of 1:10000 incubated at room temperature for 1.5 hours.