

For Research Use Only

Inhibin Beta A Monoclonal antibody



Catalog Number: 60015-1-Ig **2 Publications**

Basic Information

Catalog Number: 60015-1-Ig	GenBank Accession Number: BC007858	Purification Method: Caprylic acid/ammonium sulfate precipitation
Size: 1000 µg/ml	GeneID (NCBI): 3624	CloneNo.: 1E3C6
Source: Mouse	UNIPROT ID: P08476	Recommended Dilutions: WB 1:200-1:1000
Isotype: IgG1	Full Name: inhibin, beta A	
Immunogen Catalog Number: AG1001	Calculated MW: 47 kDa	

Applications

Tested Applications: WB, ELISA	Positive Controls: WB : human brain tissue,
Cited Applications: WB	
Species Specificity: human	
Cited Species: human	

Background Information

Inhibin β A (INHBA) is a ligand in the transforming growth factor β (TGF- β) superfamily. Inhibin β A forms a disulfide-linked homo-dimer known as activin A, which has been implicated in multiple biologic processes, including neoplastic progression. The inhibin β A can also bind the β B and α isoforms to form activin AB and inhibin, respectively.

Notable Publications

Author	Pubmed ID	Journal	Application
Jian Sun	28009989	Oncotarget	WB
Loei Hendrick H	22204653	J Proteome Res	WB

Storage

Storage:
Store at -20°C. Stable for one year after shipment.
Storage Buffer:
PBS with 0.1% sodium azide and 50% glycerol pH 7.3.
Aliquoting is unnecessary for -20°C storage

For technical support and original validation data for this product please contact:

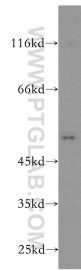
T: 4006900926

E: Proteintech-CN@ptglab.com

W: ptgcn.com

This product is exclusively available under Proteintech Group brand and is not available to purchase from any other manufacturer.

Selected Validation Data



human brain tissue were subjected to SDS PAGE followed by western blot with 60015-1-Ig (Inhibin beta A antibody) at dilution of 1:300 incubated at room temperature for 1.5 hours.