

# MAML1 Polyclonal antibody

Catalog Number: 55493-1-AP

1 Publications

## Basic Information

**Catalog Number:**

55493-1-AP

**Size:**

1000 µg/ml

**Source:**

Rabbit

**Isotype:**

IgG

**GenBank Accession Number:**

NM\_014757

**GeneID (NCBI):**

9794

**UNIPROT ID:**

Q92585

**Full Name:**

mastermind-like 1 (Drosophila)

**Calculated MW:**

108 kDa

**Observed MW:**

108-120 kDa

**Purification Method:**

Antigen affinity purification

**Recommended Dilutions:**

WB 1:500-1:2000

## Applications

**Tested Applications:**

WB, ELISA

**Cited Applications:**

WB, ColP

**Species Specificity:**

human, mouse, rat

**Cited Species:**

human

**Positive Controls:**

WB : HeLa cells, mouse heart tissue, Jurkat cells

## Background Information

MAML1, also named as KIAA0200 and Mam-1, belongs to the mastermind family. It acts as a transcriptional coactivator for NOTCH proteins. MAML1 has been shown to amplify NOTCH-induced transcription of HES1. It enhances phosphorylation and proteolytic turnover of the NOTCH intracellular domain in the nucleus through interaction with CDK8. MAML1 binds to CREBBP/CBP which promotes nucleosome acetylation at NOTCH enhancers and activates transcription. Induces phosphorylation and localization of CREBBP to nuclear foci. It plays a role in hematopoietic development by regulating NOTCH-mediated lymphoid cell fate decisions. This antibody is specific to MAML1. The calculated molecular weight of MAML1 is 108 kDa, but modified MAML1 is about 120 kDa.

## Notable Publications

Author	Pubmed ID	Journal	Application
Yanzhu Shi	35844785	Int J Biol Sci	WB, ColP

## Storage

**Storage:**

Store at -20°C. Stable for one year after shipment.

**Storage Buffer:**

PBS with 0.02% sodium azide and 50% glycerol pH 7.3.

Aliquoting is unnecessary for -20°C storage

For technical support and original validation data for this product please contact:

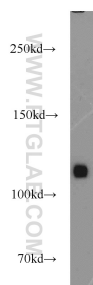
T: 4006900926

E: Proteintech-CN@ptglab.com

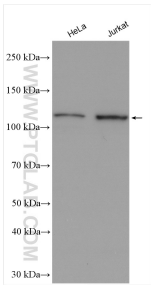
W: ptgcn.com

This product is exclusively available under Proteintech Group brand and is not available to purchase from any other manufacturer.

# Selected Validation Data



mouse heart tissue were subjected to SDS PAGE followed by western blot with 55493-1-AP (MAML1 antibody) at dilution of 1:1000 incubated at room temperature for 1.5 hours.



Various lysates were subjected to SDS PAGE followed by western blot with 55493-1-AP (MAML1 antibody) at dilution of 1:1000 incubated at room temperature for 1.5 hours.