

For Research Use Only

Rootletin Polyclonal antibody

Catalog Number: 55485-1-AP



Basic Information

Catalog Number:

55485-1-AP

Size:

1500 µg/ml

Source:

Rabbit

Isotype:

IgG

GenBank Accession Number:

NM_014675

GeneID (NCBI):

9696

UNIPROT ID:

Q5TZA2

Full Name:

ciliary rootlet coiled-coil, rootletin

Calculated MW:

229 kDa

Observed MW:

228 kDa

Purification Method:

Antigen affinity purification

Recommended Dilutions:

WB 1:1000-1:4000

IF/ICC 1:50-1:500

Applications

Tested Applications:

WB, IF/ICC, ELISA

Species Specificity:

human, mouse

Positive Controls:

WB : mouse brain tissue,

IF/ICC : hTERT-RPE1 cells,

Background Information

Rootletin is predicted to enable kinesin binding activity and structural molecule activity. Involved in several processes, including centriole-centriole cohesion; positive regulation of cilium assembly; and positive regulation of protein localization to cilium.

Storage

Storage:

Store at -20°C. Stable for one year after shipment.

Storage Buffer:

PBS with 0.02% sodium azide and 50% glycerol pH 7.3.

Aliquoting is unnecessary for -20°C storage

For technical support and original validation data for this product please contact:

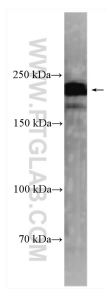
T: 4006900926

E: Proteintech-CN@ptglab.com

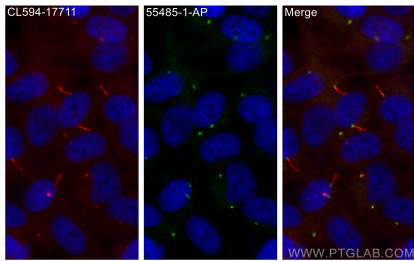
W: ptgcn.com

This product is exclusively available under Proteintech Group brand and is not available to purchase from any other manufacturer.

Selected Validation Data



mouse brain tissue were subjected to SDS PAGE followed by western blot with 55485-1-AP (Rootletin antibody) at dilution of 1:2000 incubated at room temperature for 1.5 hours.



Immunofluorescent analysis of (-20°C Methanol) fixed hTERT-RPE1 cells using Rootletin antibody (55485-1-AP) at dilution of 1:200 and CoraLite® 488-Conjugated AffiniPure Goat Anti-Rabbit IgG(H+L) (SA00013-2), CoraLite® 594 ARL13B antibody (CL594-17711, red).