

For Research Use Only

CCBL2 Polyclonal antibody, PBS Only

Catalog Number:55476-1-PBS



Basic Information

Catalog Number:

55476-1-PBS

Concentration:

1 mg/ml

Source:

Rabbit

Isotype:

IgG

GenBank Accession Number:

NM_019610

GeneID (NCBI):

56267

UNIPROT ID:

Q6YP21

Full Name:

cysteine conjugate-beta lyase 2

Calculated MW:

51 kDa

Observed MW:

48 kDa. 51- 55 kda

Purification Method:

Antigen affinity purification

Applications

Tested Applications:

WB, IHC, IF/ICC, Indirect ELISA

Species Specificity:

human

Background Information

Cysteine conjugate beta-lyase 2 (CCBL2), also known as kynurenine aminotransferase 3 (KAT3) or glutamine transaminase L (GTL), can effectively catalyze the transamination of glutamine, methionine, and kynurenine (KYN) to kynurenic acid (KYNA) as well as the pathway of drug metabolism by cytochrome P450. CCBL2 has been found in mouse, rat, and human whose mRNA is widely expressed in several organs such as the liver, kidney, heart, and neuroendocrine tissues (PMID: 35771747).

Storage

Storage:

Store at -80°C.

The product is shipped with ice packs. Upon receipt, store it immediately at -80°C

Storage Buffer:

PBS only, pH7.3

For technical support and original validation data for this product please contact:

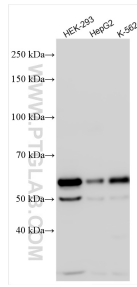
T: 4006900926

E: Proteintech-CN@ptglab.com

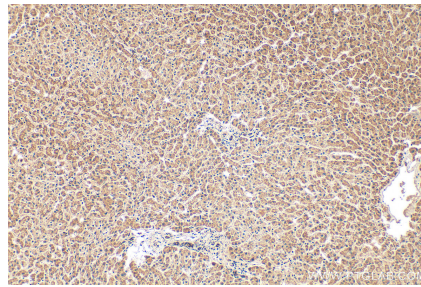
W: ptgcn.com

This product is exclusively available under Proteintech Group brand and is not available to purchase from any other manufacturer.

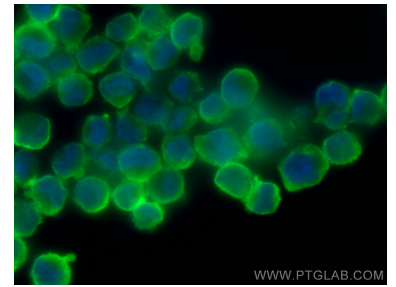
Selected Validation Data



Various lysates were subjected to SDS PAGE followed by western blot with 55476-1-AP (CCBL2 antibody) at dilution of 1:2000 incubated at room temperature for 1.5 hours. This data was developed using the same antibody clone with 55476-1-PBS in a different storage buffer formulation.



Immunohistochemical analysis of paraffin-embedded human liver tissue slide using 55476-1-AP (CCBL2 antibody) at dilution of 1:200 (under 10x lens). Heat mediated antigen retrieval with Tris-EDTA buffer (pH 9.0). This data was developed using the same antibody clone with 55476-1-PBS in a different storage buffer formulation.



Immunofluorescent analysis of (4% PFA) fixed K-562 cells using CCBL2 antibody (55476-1-AP) at dilution of 1:400 and CoraLite®488-Conjugated Goat Anti-Rabbit IgG(H+L) (SA00013-2). This data was developed using the same antibody clone with 55476-1-PBS in a different storage buffer formulation.