

For Research Use Only

CCBL2 Polyclonal antibody

Catalog Number: 55476-1-AP



Basic Information

Catalog Number:

55476-1-AP

Concentration:

450 ug/ml

Source:

Rabbit

Isotype:

IgG

GenBank Accession Number:

NM_019610

GeneID (NCBI):

56267

UNIPROT ID:

Q6YP21

Full Name:

cysteine conjugate-beta lyase 2

Calculated MW:

51 kDa

Observed MW:

48 kDa, 51- 55 kda

Purification Method:

Antigen affinity purification

Recommended Dilutions:

WB 1:1000-1:4000

IF/ICC 1:200-1:800

Applications

Tested Applications:

WB, IF/ICC, ELISA

Species Specificity:

human

Positive Controls:

WB : HEK-293 cells,

IF/ICC : K-562 cells,

Background Information

Cysteine conjugate beta-lyase 2 (CCBL2), also known as kynurenine aminotransferase 3 (KAT3) or glutamine transaminase L (GTL), can effectively catalyze the transamination of glutamine, methionine, and kynurenine (KYN) to kynurenic acid (KYNA) as well as the pathway of drug metabolism by cytochrome P450. CCBL2 has been found in mouse, rat, and human whose mRNA is widely expressed in several organs such as the liver, kidney, heart, and neuroendocrine tissues (PMID: 35771747).

Storage

Storage:

Store at -20°C. Stable for one year after shipment.

Storage Buffer:

PBS with 0.02% sodium azide and 50% glycerol pH 7.3.

Aliquoting is unnecessary for -20°C storage

For technical support and original validation data for this product please contact:

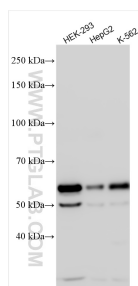
T: 4006900926

E: Proteintech-CN@ptglab.com

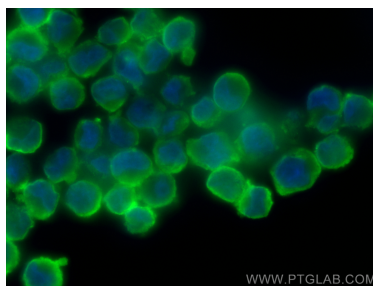
W: ptgcn.com

This product is exclusively available under Proteintech Group brand and is not available to purchase from any other manufacturer.

Selected Validation Data



Various lysates were subjected to SDS PAGE followed by western blot with 55476-1-AP (CCBL2 antibody) at dilution of 1:2000 incubated at room temperature for 1.5 hours.



Immunofluorescent analysis of (4% PFA) fixed K-562 cells using CCBL2 antibody (55476-1-AP) at dilution of 1:400 and CoraLite®488-Conjugated Goat Anti-Rabbit IgG(H+L) (SA00013-2).