

For Research Use Only

GSTM2 Polyclonal antibody

Catalog Number: 55474-1-AP



Basic Information

Catalog Number:

55474-1-AP

Size:

1500 µg/ml

Source:

Rabbit

Isotype:

IgG

GenBank Accession Number:

NM_000848

GeneID (NCBI):

2946

UNIPROT ID:

P28161

Full Name:

glutathione S-transferase mu 2
(muscle)

Calculated MW:

26 kDa

Observed MW:

26 kDa

Purification Method:

Antigen affinity purification

Recommended Dilutions:

WB 1:500-1:2000

IF 1:200-1:800

Applications

Tested Applications:

IF/ICC, WB, ELISA

Species Specificity:

human

Positive Controls:

WB : MCF-7 cells,

IF : HeLa cells,

Background Information

Glutathione S-Transferase Mu 2 (GSTM2) is a phase II metabolizing enzyme that conjugates glutathione to electrophilic compounds. GSTM2 is closely related to cancer progression, and there have been several publications regarding the function of GSTM2 in drug resistance (PMID: 36038661). Western blot analysis detected GSTM2 at an apparent molecular mass of 26 kDa.

Storage

Storage:

Store at -20°C. Stable for one year after shipment.

Storage Buffer:

PBS with 0.02% sodium azide and 50% glycerol pH 7.3.

Aliquoting is unnecessary for -20°C storage

For technical support and original validation data for this product please contact:

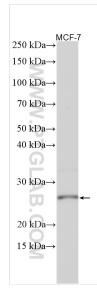
T: 4006900926

E: Proteintech-CN@ptglab.com

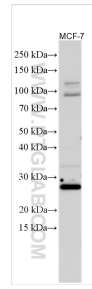
W: ptgcn.com

This product is exclusively available under Proteintech Group brand and is not available to purchase from any other manufacturer.

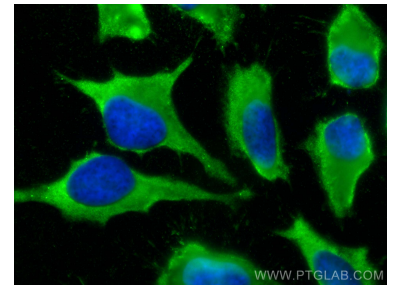
Selected Validation Data



Various lysates were subjected to SDS PAGE followed by western blot with 55474-1-AP (GSTM2 antibody) at dilution of 1:1000 incubated at room temperature for 1.5 hours.



Various lysates were subjected to SDS PAGE followed by western blot with 55474-1-AP (GSTM2 antibody) at dilution of 1:800 incubated at room temperature for 1.5 hours.



Immunofluorescent analysis of (-20°C Methanol) fixed HeLa cells using GSTM2 antibody (55474-1-AP) at dilution of 1:400 and CoraLite®488-Conjugated AffiniPure Goat Anti-Rabbit IgG(H+L).