

For Research Use Only

# MMP20 Polyclonal antibody

Catalog Number: 55467-1-AP **3 Publications**



## Basic Information

**Catalog Number:**

55467-1-AP

**Size:**

1000 µg/ml

**Source:**

Rabbit

**Isotype:**

IgG

**GenBank Accession Number:**

NM\_004771

**GeneID (NCBI):**

9313

**UNIPROT ID:**

O60882

**Full Name:**

matrix metalloproteinase 20

**Calculated MW:**

54 kDa

**Observed MW:**

54 kDa

**Purification Method:**

Antigen affinity purification

**Recommended Dilutions:**

WB 1:500-1:2000

IHC 1:20-1:200

IF 1:10-1:100

## Applications

**Tested Applications:**

IF/ICC, IHC, WB, ELISA

**Cited Applications:**

WB, IF

**Species Specificity:**

human, mouse, rat

**Cited Species:**

human, mouse, rat

**Note-IHC: suggested antigen retrieval with TE buffer pH 9.0; (\*) Alternatively, antigen retrieval may be performed with citrate buffer pH 6.0**

**Positive Controls:**

WB : mouse brain tissue, rat brain tissue

IHC : human liver cancer tissue,

IF : HeLa cells,

## Background Information

MMP20 belongs to the peptidase M10A family. It degrades amelogenin, the major protein component of the enamel matrix and two of the macromolecules characterizing the cartilage extracellular matrix: aggrecan and the cartilage oligomeric matrix protein (COMP). MMP20 may play a central role in tooth enamel formation. Defects in MMP20 are the cause of amelogenesis imperfecta hypomaturation type 2A2 (AI2A2). This antibody is specific to MMP20.

## Notable Publications

Author	Pubmed ID	Journal	Application
Akiko Suzuki	35401675	Front Genet	WB
Hiroki Yoshioka	33672174	Int J Mol Sci	IF
Haoman Niu	36579844	Cell Prolif	WB

## Storage

**Storage:**

Store at -20°C.

**Storage Buffer:**

PBS with 0.02% sodium azide and 50% glycerol pH 7.3.

Aliquoting is unnecessary for -20°C storage

For technical support and original validation data for this product please contact:

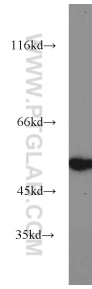
T: 4006900926

E: [Proteintech-CN@ptglab.com](mailto:Proteintech-CN@ptglab.com)

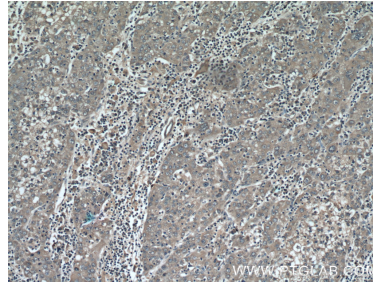
W: [ptgcn.com](http://ptgcn.com)

**This product is exclusively available under Proteintech Group brand and is not available to purchase from any other manufacturer.**

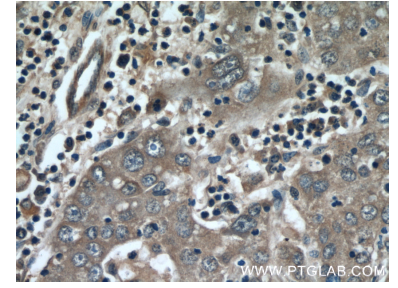
## Selected Validation Data



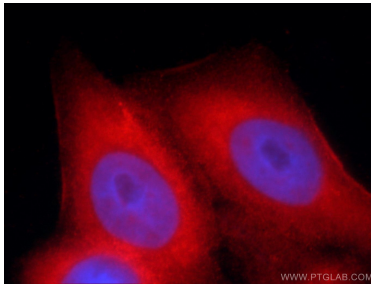
mouse brain tissue were subjected to SDS PAGE followed by western blot with 55467-1-AP (MMP20 antibody) at dilution of 1:1000 incubated at room temperature for 1.5 hours.



Immunohistochemical analysis of paraffin-embedded human liver cancer using 55467-1-AP (MMP20 antibody) at dilution of 1:50 (under 10x lens).



Immunohistochemical analysis of paraffin-embedded human liver cancer using 55467-1-AP (MMP20 antibody) at dilution of 1:50 (under 40x lens).



Immunofluorescent analysis of HeLa cells using 55467-1-AP (MMP20 antibody) at dilution of 1:25 and Rhodamine-Goat anti-Rabbit IgG.