

For Research Use Only

GSG2 Polyclonal antibody

Catalog Number: 55454-1-AP



Basic Information

Catalog Number:

55454-1-AP

Size:

400 µg/ml

Source:

Rabbit

Isotype:

IgG

GenBank Accession Number:

NM_031965

GeneID (NCBI):

83903

UNIPROT ID:

Q8TF76

Full Name:

germ cell associated 2 (haspin)

Calculated MW:

88 kDa

Observed MW:

90 kDa

Purification Method:

Antigen affinity purification

Recommended Dilutions:

WB 1:500-1:2000

Applications

Tested Applications:

WB, ELISA

Species Specificity:

human

Positive Controls:

WB : HEK-293T cells, K-562 cells, Raji cells

Background Information

Haploid germ cell-specific nuclear protein kinase (Haspin, alias GSG2) is an atypical eukaryotic protein kinase that was for a long time considered an inactive pseudokinase due to the low degree of structural homology of GSG2 with the 'classical' protein kinases (PMID: 29698892). GSG2 is a serine/threonine kinase that associates with chromosomes and phosphorylates threonine 3 of histone 3 during mitosis (PMID: 32439830).

Storage

Storage:

Store at -20°C. Stable for one year after shipment.

Storage Buffer:

PBS with 0.02% sodium azide and 50% glycerol pH 7.3.

Aliquoting is unnecessary for -20°C storage

For technical support and original validation data for this product please contact:

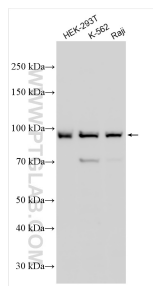
T: 4006900926

E: Proteintech-CN@ptglab.com

W: ptgcn.com

This product is exclusively available under Proteintech Group brand and is not available to purchase from any other manufacturer.

Selected Validation Data



Various lysates were subjected to SDS PAGE followed by western blot with 55454-1-AP (GSG2 antibody) at dilution of 1:1000 incubated at room temperature for 1.5 hours.