

For Research Use Only

SLC12A3/NCCT Polyclonal antibody

Catalog Number:55442-1-AP



Basic Information

Catalog Number:

55442-1-AP

Source:

Rabbit

Isotype:

IgG

GenBank Accession Number:

NM_000339

GeneID (NCBI):

6559

UNIPROT ID:

P55017

Full Name:

solute carrier family 12
(sodium/chloride transporters),
member 3

Calculated MW:

114 kDa

Observed MW:

150 kDa

Purification Method:

Antigen affinity purification

Recommended Dilutions:

WB: 1:1000-1:4000

IHC: 1:500-1:2000

Applications

Tested Applications:

WB, IHC, ELISA

Species Specificity:

human, mouse

**Note-IHC: suggested antigen retrieval with
TE buffer pH 9.0; (*) Alternatively, antigen
retrieval may be performed with citrate
buffer pH 6.0**

Positive Controls:

WB : 37°C incubated mouse kidney tissue,

IHC : mouse kidney tissue,

Background Information

SLC12A3 also known as NCCT, NCC, is a sodium-chloride cotransporter (NCC), which mainly functions in the distal convoluted tubules of the kidney and is responsible for the reabsorption of sodium ions and chloride ions (PMID: 35591852). This cotransporter is the target of thiazide diuretics used in the treatment of hypertension. Mutations in SLC12A3 cause Gitelman syndrome (PMID: 8528245, 33462018).

Storage

Storage:

Store at -20°C. Stable for one year after shipment.

Storage Buffer:

PBS with 0.02% sodium azide and 50% glycerol, pH7.3

Aliquoting is unnecessary for -20°C storage

For technical support and original validation data for this product please contact:

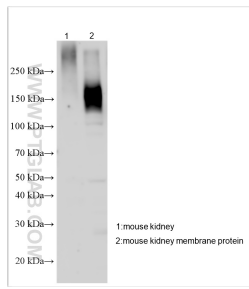
T: 4006900926

E: Proteintech-CN@ptglab.com

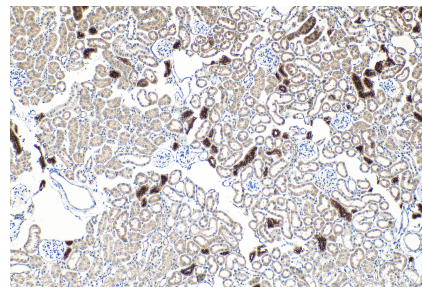
W: ptgcn.com

This product is exclusively available under Proteintech Group brand and is not available to purchase from any other manufacturer.

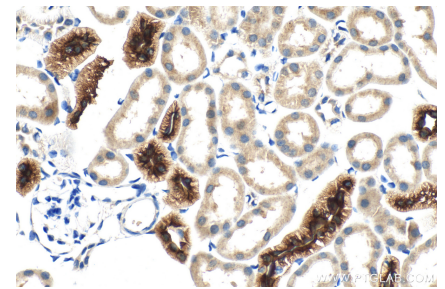
Selected Validation Data



37°C incubated mouse kidney tissue were subjected to SDS PAGE followed by western blot with 55442-1-AP (SLC12A3/NCCT antibody) at dilution of 1:2000 incubated at room temperature for 1.5 hours.



Immunohistochemical analysis of paraffin-embedded mouse kidney tissue slide using 55442-1-AP (SLC12A3/NCCT antibody) at dilution of 1:1000 (under 10x lens). Heat mediated antigen retrieval with Tris-EDTA buffer (pH 9.0).



Immunohistochemical analysis of paraffin-embedded mouse kidney tissue slide using 55442-1-AP (SLC12A3/NCCT antibody) at dilution of 1:1000 (under 40x lens). Heat mediated antigen retrieval with Tris-EDTA buffer (pH 9.0).