

For Research Use Only

# PYGL Polyclonal antibody

Catalog Number: 55429-1-AP



## Basic Information

**Catalog Number:**

55429-1-AP

**Size:**

1000 µg/ml

**Source:**

Rabbit

**Isotype:**

IgG

**GenBank Accession Number:**

NM\_002863

**GeneID (NCBI):**

5836

**UNIPROT ID:**

P06737

**Full Name:**

phosphorylase, glycogen, liver

**Calculated MW:**

97 kDa

**Observed MW:**

97-105 kDa

**Purification Method:**

Antigen affinity purification

**Recommended Dilutions:**

WB 1:1000-1:8000

IP 0.5-4.0 µg for 1.0-3.0 mg of total protein lysate

IF 1:20-1:200

## Applications

**Tested Applications:**

IF/ICC, IP, WB, ELISA

**Species Specificity:**

human, mouse

**Positive Controls:**

WB : HeLa cells, HepG2 cells, PC-3 cells, mouse liver

IP : HepG2 cells,

IF : HepG2 cells,

## Background Information

PYGL belongs to the glycogen phosphorylase family. Phosphorylase is an important allosteric enzyme in carbohydrate metabolism. Enzymes from different sources differ in their regulatory mechanisms and in their natural substrates. However, all known phosphorylases share catalytic and structural properties. Defects in PYGL are the cause of glycogen storage disease type 6 (GSD6). This antibody is specific to PYGL. It has no cross reaction to PYGM and PYGB.

## Storage

**Storage:**

Store at -20°C.

**Storage Buffer:**

PBS with 0.02% sodium azide and 50% glycerol pH 7.3.

Aliquoting is unnecessary for -20°C storage

For technical support and original validation data for this product please contact:

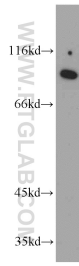
T: 4006900926

E: [Proteintech-CN@ptglab.com](mailto:Proteintech-CN@ptglab.com)

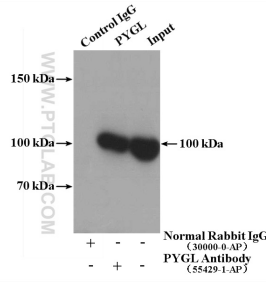
W: [ptgcn.com](http://ptgcn.com)

**This product is exclusively available under Proteintech Group brand and is not available to purchase from any other manufacturer.**

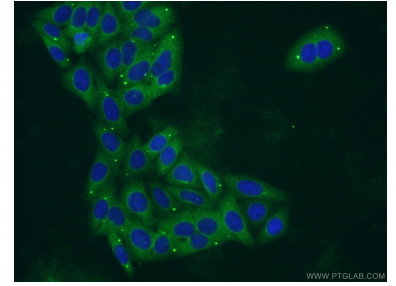
## Selected Validation Data



HepG2 cells were subjected to SDS PAGE followed by western blot with 55429-1-AP (PYGL antibody) at dilution of 1:500 incubated at room temperature for 1.5 hours.



IP result of anti-PYGL (IP:55429-1-AP, 4ug; Detection:55429-1-AP 1:500) with HepG2 cells lysate 2400ug.



Immunofluorescent analysis of HepG2 cells using 55429-1-AP (PYGL antibody) at dilution of 1:50 and Alexa Fluor 488-conjugated AffiniPure Goat Anti-Rabbit IgG(H+L).