

For Research Use Only

CYP3A7 Polyclonal antibody

Catalog Number: 55428-1-AP

1 Publications



Basic Information

Catalog Number:

55428-1-AP

Size:

2500 µg/ml

Source:

Rabbit

Isotype:

IgG

GenBank Accession Number:

NM_000765

GeneID (NCBI):

1551

UNIPROT ID:

P24462

Full Name:

cytochrome P450, family 3, subfamily A, polypeptide 7

Calculated MW:

58 kDa

Observed MW:

58 kDa

Purification Method:

Antigen affinity purification

Recommended Dilutions:

WB 1:500-1:1000

IHC 1:50-1:500

IF/ICC 1:50-1:500

Applications

Tested Applications:

WB, IF/ICC, IHC, ELISA

Cited Applications:

IF

Species Specificity:

human, mouse

Cited Species:

human

Note-IHC: suggested antigen retrieval with TE buffer pH 9.0; (*) Alternatively, antigen retrieval may be performed with citrate buffer pH 6.0

Positive Controls:

WB : L02 cells, HepG2 cells

IHC : human liver cancer tissue,

IF/ICC : HepG2 cells,

Background Information

Notable Publications

| Author | Pubmed ID | Journal | Application |
|----------------|-----------|-------------------------|-------------|
| Koki Yoshimoto | 33015019 | Front Bioeng Biotechnol | IF |

Storage

Storage:

Store at -20°C. Stable for one year after shipment.

Storage Buffer:

PBS with 0.02% sodium azide and 50% glycerol pH 7.3.

Aliquoting is unnecessary for -20°C storage

For technical support and original validation data for this product please contact:

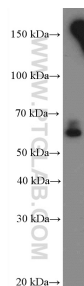
T: 4006900926

E: Proteintech-CN@ptglab.com

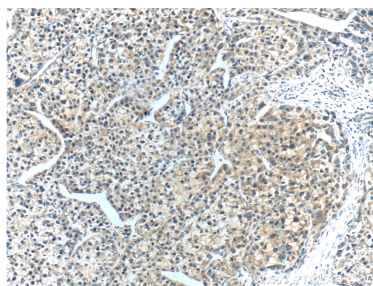
W: ptgcn.com

This product is exclusively available under Proteintech Group brand and is not available to purchase from any other manufacturer.

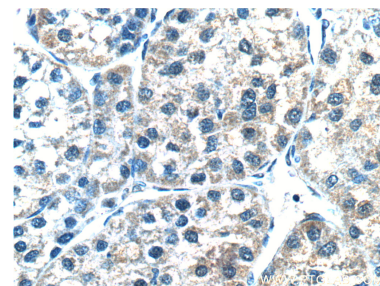
Selected Validation Data



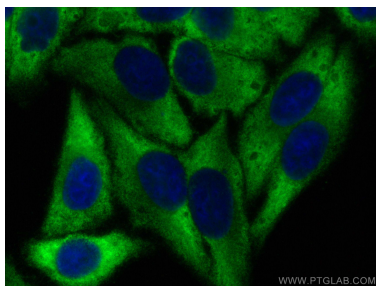
L02 cells were subjected to SDS PAGE followed by western blot with 55428-1-AP (CYP3A7 Antibody) at dilution of 1:600 incubated at room temperature for 1.5 hours.



Immunohistochemical analysis of paraffin-embedded human liver cancer tissue slide using 55428-1-AP (CYP3A7 Antibody) at dilution of 1:200 (under 10x lens).



Immunohistochemical analysis of paraffin-embedded human liver cancer tissue slide using 55428-1-AP (CYP3A7 Antibody) at dilution of 1:200 (under 40x lens).



Immunofluorescent analysis of (-20°C Ethanol) fixed HepG2 cells using CYP3A7 antibody (55428-1-AP) at dilution of 1:200 and CoraLite®488-Conjugated AffiniPure Goat Anti-Rabbit IgG(H+L) (SA00013-2).