

For Research Use Only

# CD169 Polyclonal antibody, PBS Only

Catalog Number: 55427-1-PBS



## Basic Information

Catalog Number:

55427-1-PBS

Concentration:

1 mg/ml

Source:

Rabbit

Isotype:

IgG

GenBank Accession Number:

NM\_023068

GeneID (NCBI):

6614

UNIPROT ID:

Q9BZZ2

Full Name:

sialic acid binding Ig-like lectin 1,  
sialoadhesin

Calculated MW:

183 kDa

Purification Method:

Antigen affinity purification

## Applications

Tested Applications:

IHC, IF-P, Indirect ELISA

Species Specificity:

human

## Background Information

CD169, also known as sheep erythrocyte receptor (SER), Sialoadhesin (Sn) or Siglec-1, is a sialic acid-binding immunoglobulin-like lectin that belongs to the SIGLEC family of the Ig superfamily (PMID: 3783087; 11133773). CD169 is a single-pass transmembrane protein containing a long extracellular domain, a transmembrane region, and a short cytoplasmic tail (PMID: 11133773). It is primarily expressed on the surface of specific macrophage subsets and its precursor monocytes, as well as on some DCs (PMID: 33408860). CD169 binds to sialic acid-containing glycoconjugates, particularly those with  $\alpha$  (2,3)-linkages. It is involved in immune regulation, pathogen recognition, and cell-cell interactions.

## Storage

Storage:

Store at -80°C.

The product is shipped with ice packs. Upon receipt, store it immediately at -80°C

Storage Buffer:

PBS only, pH7.3

For technical support and original validation data for this product please contact:

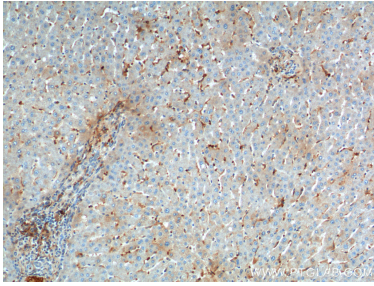
T: 4006900926

E: [Proteintech-CN@ptglab.com](mailto:Proteintech-CN@ptglab.com)

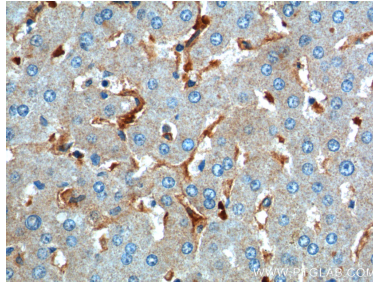
W: [ptgcn.com](http://ptgcn.com)

This product is exclusively available under Proteintech Group brand and is not available to purchase from any other manufacturer.

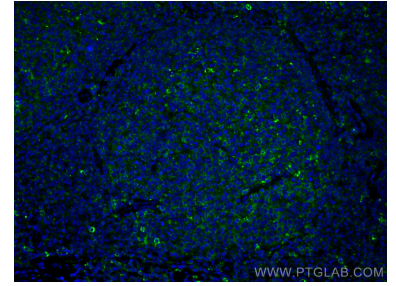
## Selected Validation Data



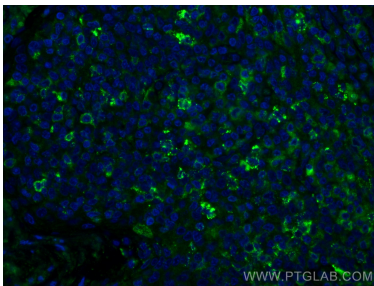
Immunohistochemical analysis of paraffin-embedded human liver tissue slide using 55427-1-AP (CD169 Antibody) at dilution of 1:200 (under 10x lens). This data was developed using the same antibody clone with 55427-1-PBS in a different storage buffer formulation.



Immunohistochemical analysis of paraffin-embedded human liver tissue slide using 55427-1-AP (CD169 Antibody) at dilution of 1:200 (under 40x lens). This data was developed using the same antibody clone with 55427-1-PBS in a different storage buffer formulation.



Immunofluorescent analysis of (4% PFA) fixed human tonsillitis tissue using CD169 antibody (55427-1-AP) at dilution of 1:200 and CoraLite®488-Conjugated AffiniPure Goat Anti-Rabbit IgG(H+L). This data was developed using the same antibody clone with 55427-1-PBS in a different storage buffer formulation.



Immunofluorescent analysis of (4% PFA) fixed human tonsillitis tissue using CD169 antibody (55427-1-AP) at dilution of 1:200 and CoraLite®488-Conjugated AffiniPure Goat Anti-Rabbit IgG(H+L). This data was developed using the same antibody clone with 55427-1-PBS in a different storage buffer formulation.