

# ZFYVE26 Polyclonal antibody

Catalog Number: 55418-1-AP

## Basic Information

<b>Catalog Number:</b> 55418-1-AP	<b>GenBank Accession Number:</b> NM_015346	<b>Purification Method:</b> Antigen affinity purification
<b>Size:</b> 450 µg/ml	<b>GeneID (NCBI):</b> 23503	<b>Recommended Dilutions:</b> IHC 1:50-1:500 IF/ICC 1:200-1:800
<b>Source:</b> Rabbit	<b>UNIPROT ID:</b> Q68DK2	
<b>Isotype:</b> IgG	<b>Full Name:</b> zinc finger, FYVE domain containing 26	
	<b>Calculated MW:</b> 285 kDa	

## Applications

<b>Tested Applications:</b> IF/ICC, IHC, ELISA	<b>Positive Controls:</b>
<b>Species Specificity:</b> human, mouse	<b>IHC :</b> mouse heart tissue, <b>IF/ICC :</b> NIH/3T3 cells,
<b>Note-IHC: suggested antigen retrieval with TE buffer pH 9.0; (*) Alternatively, antigen retrieval may be performed with citrate buffer pH 6.0</b>	

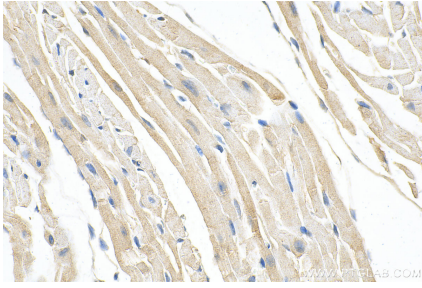
## Background Information

ZFYVE26 is a large protein of 2539 amino acid residues and contains a FYVE domain that confers to the protein binding affinity to the membrane-associated phosphatidylinositol 3-phosphate (PtdIns3P). ZFYVE26 has a diffuse cytoplasmic distribution and partially colocalizes with early endosomes, the endoplasmic reticulum, microtubules, and vesicles. It localizes also to the midbody during cytokinesis (PMID: 24284334).

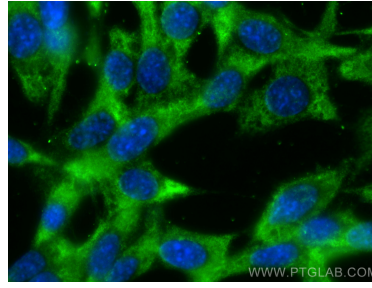
## Storage

**Storage:**  
Store at -20°C. Stable for one year after shipment.  
**Storage Buffer:**  
PBS with 0.02% sodium azide and 50% glycerol pH 7.3.  
Aliquoting is unnecessary for -20°C storage

## Selected Validation Data



Immunohistochemical analysis of paraffin-embedded mouse heart tissue slide using 55418-1-AP (ZFYVE26 antibody) at dilution of 1:200 (under 40x lens). Heat mediated antigen retrieval with Tris-EDTA buffer (pH 9.0).



Immunofluorescent analysis of (-20°C Ethanol) fixed NIH/3T3 cells using ZFYVE26 antibody (55418-1-AP) at dilution of 1:400 and CoraLite®488-Conjugated AffiniPure Goat Anti-Rabbit IgG(H+L) (SA00013-2).